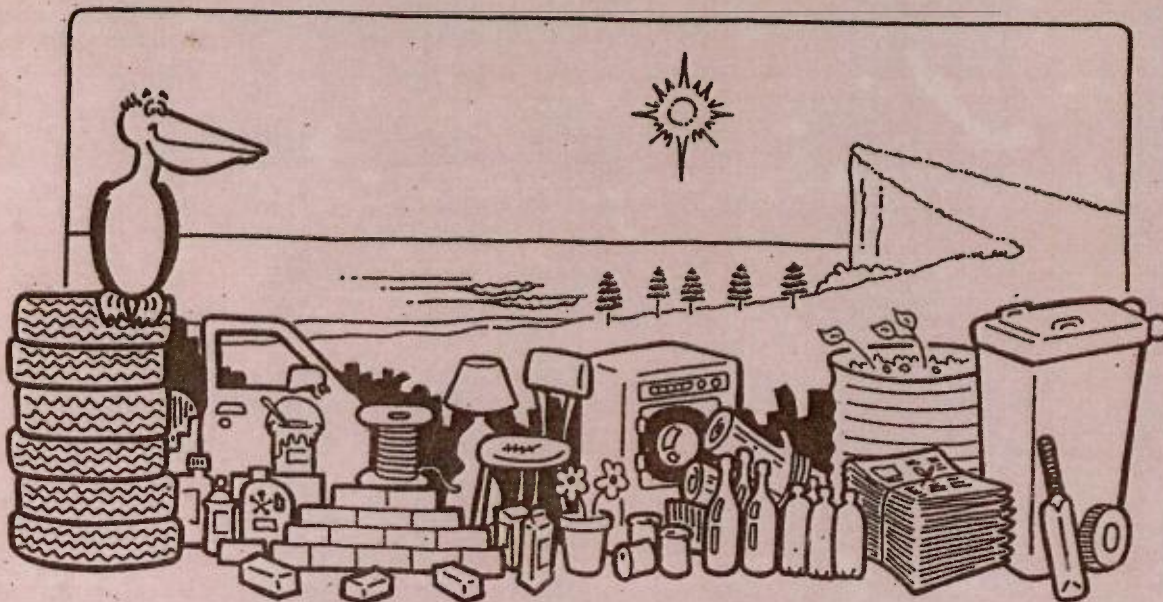


The Central Coast Waste Guide



**Your guide to Waste Resources and Services in the
Central Coast Region, incorporating Gosford and
Wyong Councils.**



Proudly presented by the Central Coast Waste Board

"NOTHING IS WASTED ON THE CENTRAL COAST"

**SER/NSWWB
1999 CEN**

THE CENTRAL COAST WASTE GUIDE

628.4

CEN

990147(2)

CENTRAL COAST WASTE PLANNING AND MANAGEMENT BOARD



40 Mann Street, Gosford
PO Box 345, Gosford 2250
Telephone (02) 4323 4343
Facsimile (20) 4325 3711

January 1999

File: WM 2800

Dear Sir/Madam,

RE: "THE CENTRAL COAST WASTE GUIDE"

Please find enclosed a copy of "**The Central Coast Waste Guide**", which is a compilation of the work completed by the Central Coast Waste Board to date. The guide is divided into a number of informative sections, including;

- When Less = More manual (including industry case studies)
- Waste Information Guide (local material recyclers/receivers, second hand goods and waste service providers)
- Council Waste Services (Gosford and Wyong)
- Useful Contacts and References (World Wide Web sites and Organisations)
- WasteWatch Newsletters
- Other Board Publications

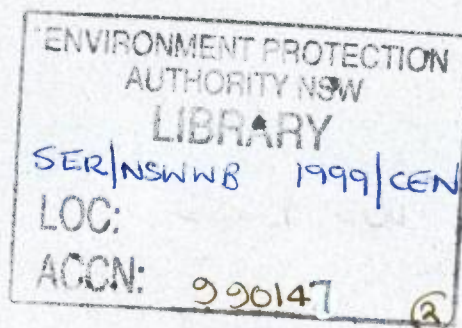
Due to the limited number of newsletters and Board publications, your folder may be missing some items. If you are on our regular mailing list, you will have received the first four copies of our newsletter and selected publications by the Board.

"**The Central Coast Waste Guide**" will be updated on a regular basis, with updates being sent out in loose leaf format to all interested parties. This will ensure that "*Nothing is Wasted on the Central Coast*" and that Central Coast businesses and residents have the opportunity to reduce waste going to landfill. The folders were purchased from Reverse Garbage and are a re-used product.

Please feel free to contact the Board on 02 4323 4343 if you have any suggestions to further improve this publication or any other aspect of our work.

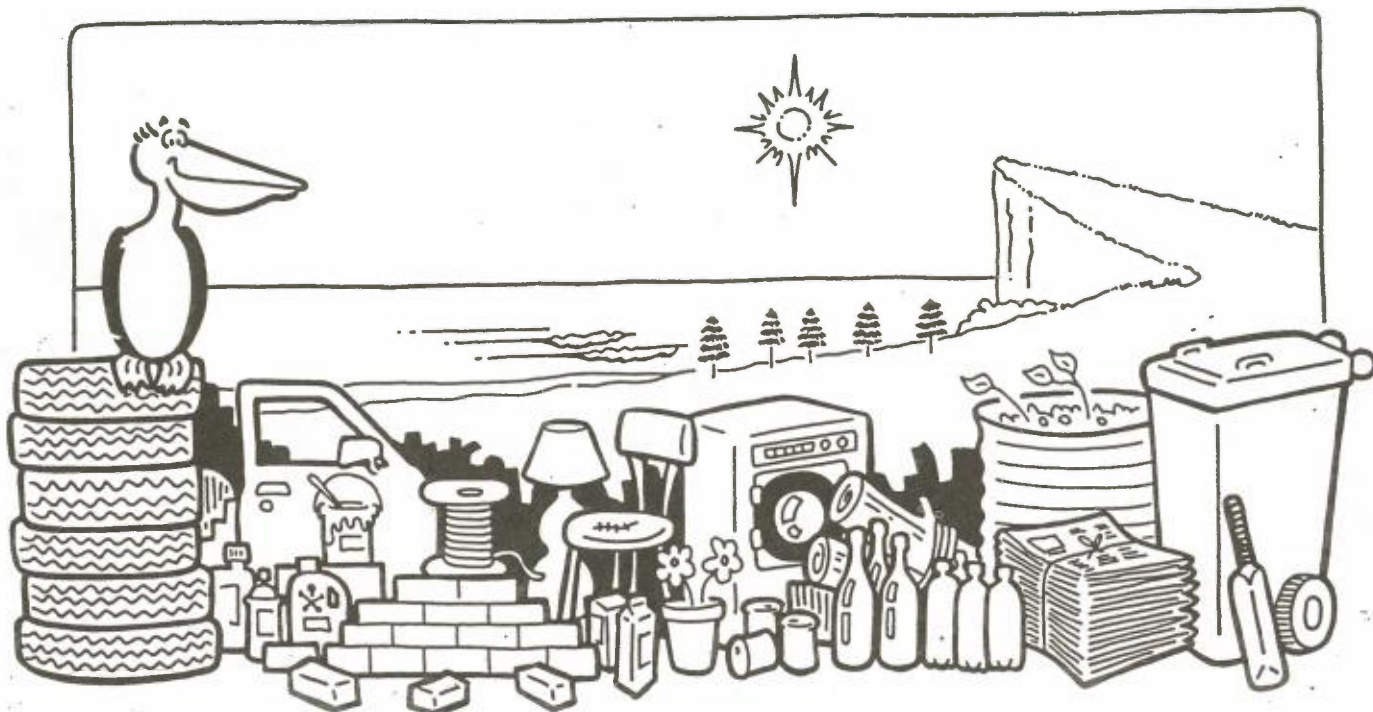
Yours faithfully

James Lawson
Waste Management Officer



990002CCWaste Guide6 1

The Central Coast Waste Guide



**Your guide to Waste Resources and Services in the
Central Coast Region, incorporating Gosford and
Wyong Councils.**



Proudly presented by the Central Coast Waste Board

"NOTHING IS WASTED ON THE CENTRAL COAST"

TABLE OF CONTENTS

	SECTION
INTRODUCTION	Green
About the Central Coast Waste Board	
WHEN LESS = MORE MANUAL	White
Overview	
Self Assessment Guide	
Industry Case Studies	
WASTE INFORMATION GUIDE	Light Blue
Material Recyclers/Receivers	
Second Hand Goods	
Waste Service Providers	
COUNCIL WASTE SERVICES	Yellow
Gosford City Council	
Wyong Shire Council	
USEFUL CONTACTS AND RESOURCES	Red
World Wide Web Sites	
Organisations	
WASTEWATCH NEWSLETTERS	Black
OTHER BOARD PUBLICATIONS	Dark Blue
Building on Recycling Technology	
Central Coast Waste Board information booklet	
Garden & Household Waste	
Central Coast Waste Board Annual Report 1996-98	
Central Coast Regional Waste Plan - Executive Summary July 1998	
INDEX	Purple

INTRODUCTION

INTRODUCTION

The Central Coast Waste Guide is a publication by the Central Coast Waste Board aimed at local community who want to keep informed on how to effectively avoid, re-use, recycle and dispose of material. The materials contained within the folder will be updated on a regular basis and will be sent out to interested parties. In the interest of waste minimisation, only updated individual components of the folder will be mailed out. It is envisaged that all this material will be available at the Board's World Wide Web site, <http://www.ccwaste.idl.com.au>, whereby information sheets may be copied.

The Central Coast Waste Board is a state government authority established under the *Waste Minimisation and Management Act 1995* to reduce the amount of waste to landfill by 60% by the year 2000, prepare and implement a Regional Waste Plan, establish a waste management hierarchy of the following order;

- Avoidance
- Re-use
- Recycling and reprocessing
- Disposal

The Central Coast Waste Guide is a compilation of materials produced by the Central Coast Waste Board and is divided into eight (8) easy to use sections. These sections allow the reader to easily source information on a particular issue such as locating a local company who accepts concrete. The folder allows the reader to add new material such as industry case studies to the *When Less = More manual* and/or add new WasteWatch newsletters. An index has been placed at the back of the folder to further assist the reader in sourcing a topic, company, material and publication.

The Central Coast Waste Board is committed to reducing waste to landfill and ensuring that *"Nothing is Wasted on the Central Coast"*. This involves the co-operation of a number of key stakeholders in the local area including;

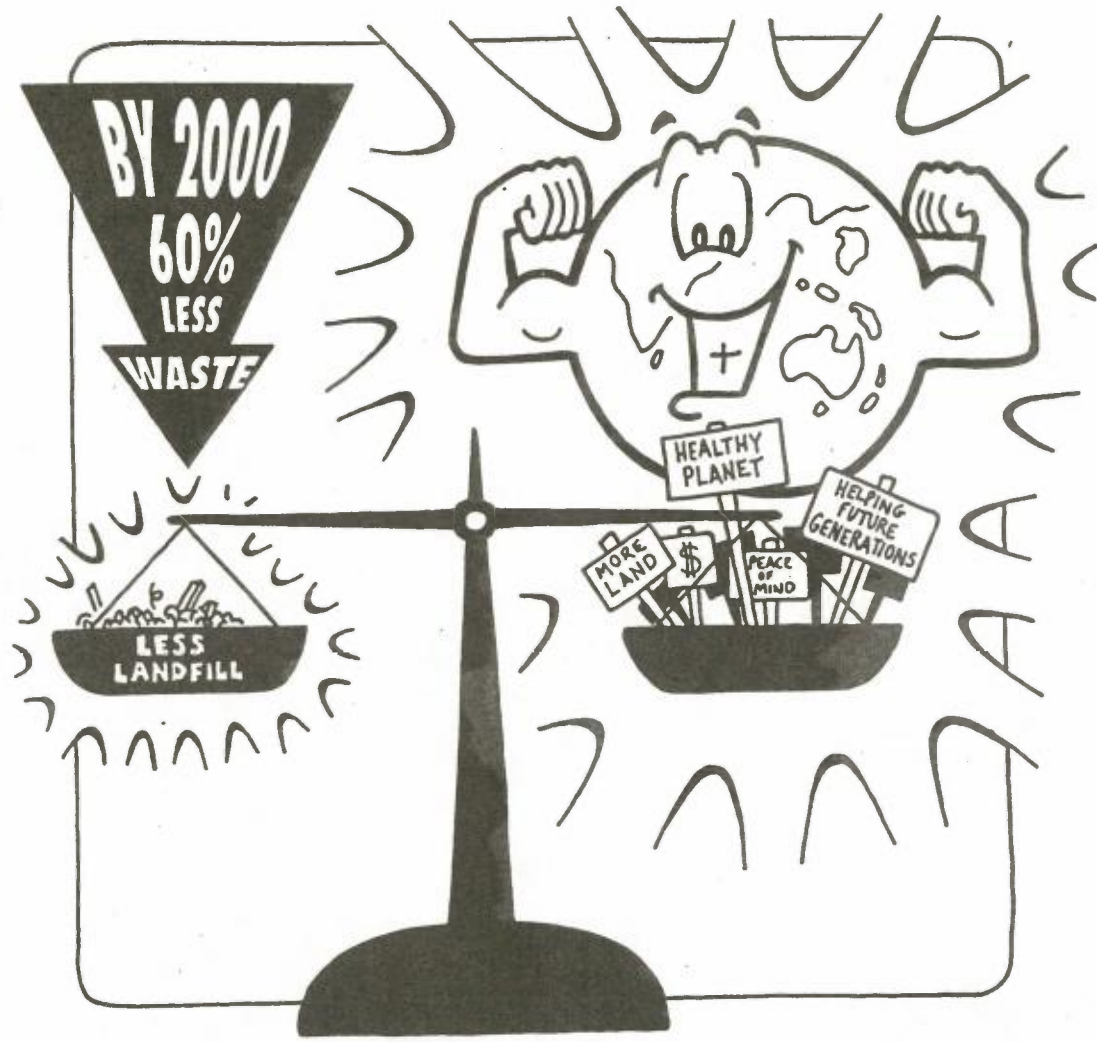
- Central Coast businesses
- Central Coast residents
- Gosford City Council
- Wyong Shire Council

Please feel free to contact the Board on 02 4323 4343 if you have any suggestions to further improve this publication or any other aspect of our work.

WHEN LESS = MORE MANUAL

WHEN LESS =
MORE MANUAL

WHEN LESS = MORE MANUAL



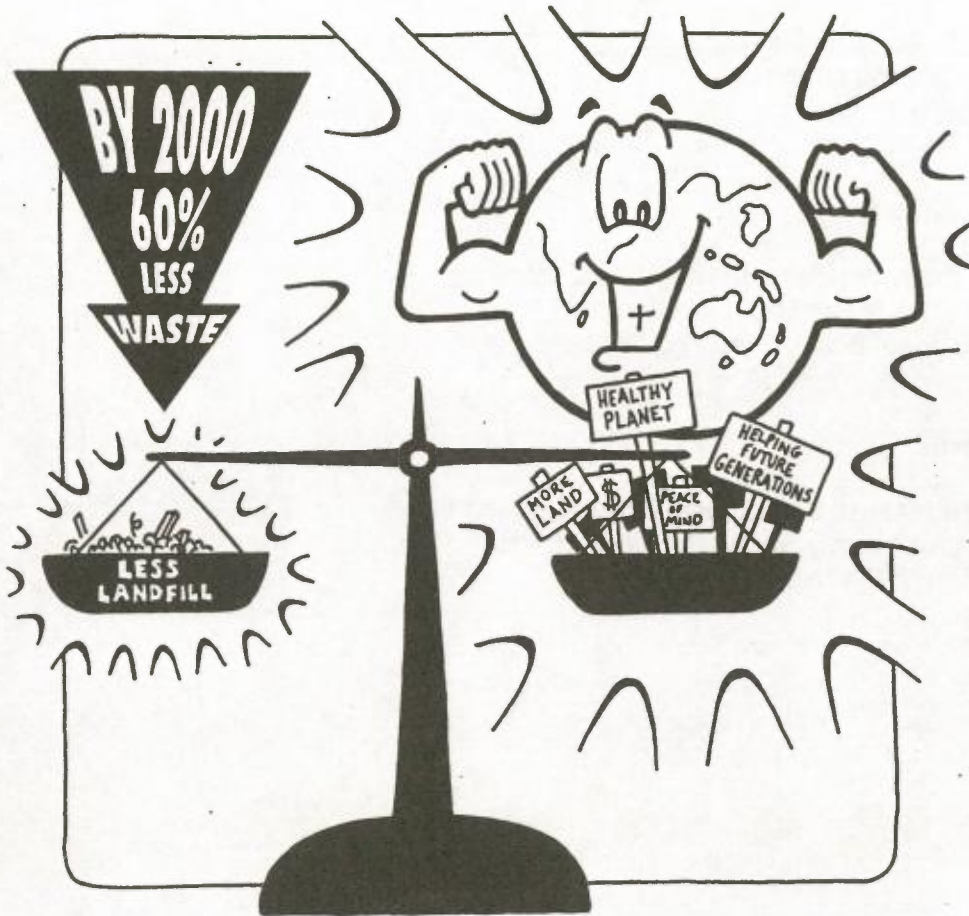
The opinions expressed in this material do not necessarily reflect the policies of the New South Wales Government

"Nothing is Wasted on the Central Coast"

WHEN LESS = MORE MANUAL

Part 1 Overview

This section contains the background to the project and outlines the benefits of minimising waste



The opinions expressed in this material do not necessarily reflect the policies of the New South Wales Government

"Nothing is Wasted on the Central Coast"

Acknowledgments

This project has been assisted by the New South Wales Government through its Waste Planning and Management Fund's Waste Reduction Grants Program.

The following businesses are thanked for their input and assistance with the development of this manual:

Timber Industry

Doug Eaton, Eaton Building Materials
Kevin Dewar, Dewars Cabinets
Warwick Walker Timbers

Shopping Centres

Alison Gleeson, Lakeside Plaza Shopping Centre
Jim McCredie, Erina Fair Shopping Centre
Vince Ursino, Pearl Beach Shopping Centre

Caravan Parks

Alan and Sandra East, Easts Ocean Beach Caravan Park
Susan and John Murray, Sun Valley Caravan Park
Walter Hammer, Wyoming Caravan Park

Disclaimer : This manual is a self-assessment guide designed to assist individual industry operators assess waste management performance. It does not take consideration of environmental legislation that may be relevant to each site. Business operators with particular concerns regarding legal obligations for their site should contact the New South Wales Environment Protection Authority, New South Wales Chamber of Commerce, Australian Chamber of Manufacturers, their local council or seek specialised legal advice.

The Central Coast Waste Management and Planning Board, Centre for Environmental Solutions, directors, authors or any other persons involved in the preparation and distribution of this publication expressly disclaim any form of liability to any person in respect of the publication and any consequences arising from its use by any person.

Contents

Acknowledgments

Contents

Foreword

Background.....	1
Introduction	2
What are wasted resources?.....	3
Who is the program for?	4
How to use the manual.....	5
What are the benefits?.....	7
Must I participate?.....	9
How much will it cost?.....	9

References

Foreword

It is with great pleasure that I present this informative and resourceful education manual "When Less = More" for Central Coast commercial and industrial industries on behalf of the Central Coast Waste Planning and Management Board. The New South Wales Government through its Waste Planning and Management Fund's Waste Reduction Grants Program has assisted this resource manual.

The Central Coast Waste Region is made up of the Gosford and Wyong Local Government Areas, with around 270,000 people. This population is projected to grow to around 278,000 by the year 2000 although the rate of growth is expected to slow. A large proportion of the population is made up of young families and retirees.

Currently, Central Coast residents generate approximately 336,000 tonnes of waste requiring landfill disposal each year. This equates to about 1.25 tonnes of waste per person per year. The Commercial and Industrial sector makes up approximately 37% by weight of the waste stream, equating to almost 124,320 tonnes per year requiring landfill.

The NSW State Government under the Waste Minimisation and Management Act 1995 has set a target of reducing the amount of waste going to landfill by 60% by the year 2000 (relative to 1990 waste disposal rates). To facilitate integrated waste management planning and the provision of waste management services within the region, the Central Coast Waste Planning and Management Board was formed under the terms of the Act. The Board has prepared a Regional Waste Plan that commits the region over the short and long term. Another objective of the Plan is to establish a waste management hierarchy on the Central Coast.

This manual has been developed in co-operation with local industries, for without their valuable input this project would not have been possible. The Central Coast Waste Planning and Management Board hopes local industries can use this manual in a resourceful manner in order that we can reach the 60% waste reduction target.



Robert Bell
Acting Chairperson

Background

The Central Coast Waste Board (CCWB) has undertaken this project with the assistance of the New South Wales Government through its Waste Planning and Management Fund's Waste Reduction Grants Program. It is part of the Board's Commercial and Industrial Waste Avoidance Program, initiated in response to a State government aim to reduce the amount of waste entering landfill.

A central feature of the project is the *"When Less - More"* resource manual. Based on the application of the waste minimisation hierarchy, the manual provides practical information for businesses wanting to minimise waste. It helps businesses to identify areas where improvements in resource management can be made, to set targets for improvement and to monitor progress.

Businesses that participate can review resource management from the beginning to the end of their production processes. The emphasis is on reducing resource wastage at the source rather than trying to control wastes at the "end of pipe" stage.

Good waste management practices need not be expensive and can have considerable benefits. These include:

- Substantial cost savings
- Increased efficiency and productivity
- Reduced liability
- Competitive advantages
- Improved environmental performance
- Increased staff morale, and
- Better workplace health and safety



It makes good business sense to ensure that as many resources as possible leave your operations as a product or service rather than as waste. Avoidance of waste – whether liquid, solid or gas – will save money in the long run because the need to treat or dispose of the waste can be minimised. The costs of the raw materials that would otherwise have been wasted are also reduced.

Participation in this process is entirely voluntary and is not required by any law. Additional advice or help with this manual is available from the
**Central Coast Waste Board,
Phone (02) 4323 4343.
Level 1, 40 Mann St, Gosford NSW
PO Box 345 Gosford NSW 2250**

Introduction

Most organisations, regardless of size and type, generate outputs. These outputs can be in the form of commodities, pollutants or discarded materials. Outputs that are not released as products or services are commonly referred to as waste. Little value is placed on our wastes even though they usually cost money to remove and can be harmful to the environment.

There is another way of looking at our wastes. In any process, total material inputs will always equal outputs. In an *inefficient* system of operation, the ratio of waste outputs to productivity outputs is high. Raw materials and energy are being lost from the system and are ending up in landfill, as waste liquids or in the atmosphere as gaseous emissions.

In an *optimum* system, the waste outputs are low, as energy and materials are going into making products and services in the most efficient way as possible. Wastage is kept to an absolute minimum, as any outputs that are not leaving the system in the form of a product or service are viewed as wasted resources and a cost to the business.

Wastes are avoided in the optimum model through the application of waste minimisation techniques. Alternative uses are found for any byproducts that cannot be avoided, either by recycling or reusing them on site or as a raw material in another operation either onsite or elsewhere.

The term commonly used to describe the minimisation of resource wastage in business is "cleaner production". In addition to regionally based projects co-ordinated by Waste Management Boards, cleaner production models have been developed and implemented at a State and National level.

A series of reports and manuals are available from the NSW Environment Protection Authority as part of the Solutions to Pollution initiative. National programs include the Cleaner Production Strategy and Environmental Management Systems (ISO 14000 series) for environmental accreditation. Codes of practice have also been developed nationally in conjunction with various industry associations. It is beneficial for businesses to be aware of agreements and codes of practice established by industry representatives as these may impact on waste management practices at a local level.

What are Wasted Resources?

Any substances or materials that do not leave your operation in the form of a product, service or commodity can technically be described as waste. Another way of saying this is: any substance or material not used in manufacture, processing or service delivery has been wasted.

Wasted resources can come in many forms. These include:

- Contaminated or out-of date materials
- Off-specification or reject products
- Spilt materials and off-cuts
- Packaging materials
- By-products



One of the first steps in Part 2 of the manual is to help you identify which resources are being wasted in your business.



DID YOU KNOW...

That the commercial and industrial sector generate 37% of the Central Coast waste stream. Recent research by the NSW Environment Protection Authority which measured the quantity and nature of the waste generated by this sector indicated that a large proportion comprises organic compostable material, ie. food, wood and paper waste. The CCWB believe that by focusing its efforts and available resources on this sector, the maximum diversion from landfill can be achieved. The CCWB believes that nothing should be wasted on the Central Coast.

Who is the Program For?

The program has been developed for businesses of all sizes operating in the Central Coast Region. However, this manual can be used for any region and business.

Although the pilot project involved three industry groups in the first instance – retail shopping centres, caravan parks, and wood manufacturing – any businesses within the region can participate in the program.

Please contact the Central Coast Waste Board for additional copies of the manual or alternatively this document can be photocopied.

How to Use the Manual



The "When Less = More" resource manual outlines a process for measuring resource wastage in your business, how much it is costing the business and what options are available for avoiding waste.

It contains practical suggestions on how to minimise waste in an effective and financially efficient way and is mindful of the time and financial pressures often experienced by the private sector.

This booklet is Part 1 of the manual and the remaining sections are briefly described below. The manual is in modular form so that its content can be specifically tailored to individual business needs. Parts 1 and 2 are booklets and the remaining Parts come in the form of loose sheets.

Part 1 – Overview: This booklet contains the background to the project and outlines the benefits of minimising waste.

Part 2 – Self Assessment Guide: The guide contains a step-by-step process for waste minimisation planning. It contains pre-prepared forms that can be photocopied and filled in.

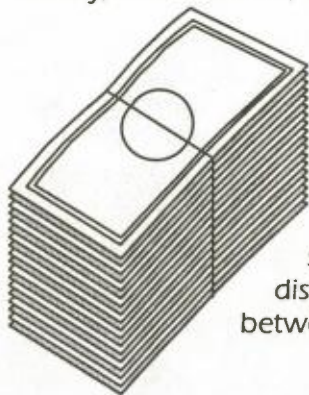
Part 3 – Industry Fact Sheets: These describe waste minimisation issues specific to particular industry types. They also contain case studies of businesses on the Central Coast and the methods adopted locally to minimise waste. Fact sheets have been completed for each of the pilot industries, and additional sheets will be made available for other industry types as they are included in the program.

Glossary of Terms A glossary of terms is included to provide assistance to the reader with explanations to common terms used within the waste industry.

What are the benefits?

Reduce costs

Traditional waste reduction methods rely heavily upon "add on" technologies. These have been shown to not only burden production, but also cost your business in the form of capital outlay, maintenance, labour, treatment or disposal.



Waste minimisation has the potential to enhance business competitiveness and efficiency. Economic incentives can be substantial, depending on the type of business, the nature of the processes and the competitive environment.

Relatively minor changes to production processes often yield large savings, particularly in the areas of waste handling, treatment and disposal. Most case studies show that on average, pay back periods fall between 2 months to 2 years.

Other potential cost savings are:

- Savings on raw materials
- Reduced production costs through improved management
- Reduced transportation costs
- Reduced compliance costs for permits, monitoring and enforcement
- Income derived through the sale or reuse of waste

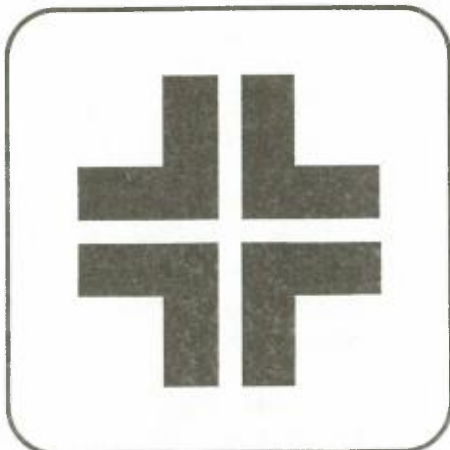
We strongly recommend that you consult with the CCWE before starting or investing capital in waste management or recycling to prevent potentially costly remedial works

Environmental Improvement

Until recently, certain levels of environmental damage have been considered "acceptable" by industry and a necessary "trade off" between environmental protection and economic growth. This argument has since lost credibility and is no longer acceptable as goals for economic growth move more towards finding a sustainable balance.

Minimising waste can offer a cleaner, safer world for ourselves, our children and the environment. By using resources more efficiently, pollution of the air, water and land is prevented and waste going to landfill is reduced without compromising production capacity. We also reduce the rate of depletion of natural resources.

Improved Occupational Health and Safety



Occupational health and safety standards can be improved by reducing the toxicity and quantity of waste streams. This can be achieved through measures such as reducing resource wastage at the source, re-using or recycling resources in production processes or by waste treatment.

A clean business is a healthy business not only for shareholders but for the employees as well. It offers great potential for businesses to improve their own performance and promotes an anticipatory approach to taking care of business.

Competitive advantages

The community is placing an increasing priority on environmentally friendly choices for consumers. As a result, there are market opportunities in "greener-cleaner" production and/or products through waste minimisation planning.

The concept stage for a new facility or project is the most favourable time to consider alternative technologies, production processes and capital equipment options. This encourages the adoption of strategies that minimise resource wastage.

A conscientious approach to waste minimisation may also improve a company's relations and image with other businesses and the public. Environmental concerns are often expressed over new development proposals and the production of a waste minimisation plan can be a crucial step in the acceptance of a development application. An integrated strategy for waste management from generation through to disposal helps to minimise or address public concerns at an early stage.

Government agencies often recognise companies who choose to reduce wastes and operate in an environmentally responsible manner through the provision of awards and incentives.



Reduce Liability



Businesses can leave themselves open to increasing environmental and commercial liability unless they take an anticipatory approach to managing the environmental impact of their operations. Stricter regulatory requirements in the future may become an important factor in adopting improved waste minimisation. By moving toward self-regulation and complying with legislative requirements, possible future liabilities are minimised eg. Contaminated site clean-up costs.

Must I Participate?

As this program is voluntary, there is no legal obligation for your business to participate. At the same time, it is recommended as a matter of course that any waste management plans that you develop should take into account the legal framework within which your industry operates. This would include any laws or regulations of an environmental nature.

Environmental legislation exists to control impact on the environment and public health. It covers emissions to air, discharges to the sewer and waterways, the use of hazardous substances and waste disposal.

Several different government departments administer the Acts. Information on or copies of environmental legislation can be obtained from the relevant authority or the Government Information Service on (02) 9228 8900.

How Much Will it Cost?

There is no cost to join the program. Manuals are available FREE OF CHARGE from the CCWB.

CCWB can help you get started with initial advice and assistance but it is the responsibility of each participating business to source funds for any consultancy or infrastructure requirements. Business assistance schemes may be an option for financing waste minimisation infrastructure.

References

Australian Chamber of Manufacturers (1997) Environmental Management: Taking Care of Business – A Handbook for Small Business in the Northern Territory

Australian Chamber of Manufacturers (1993) Environment Management Handbook for Small Industry

Central Coast Waste Planning and Management Board (1997) Central Coast Draft Regional Waste Plan, September 1997.

Environment Protection Agency, C'th (1996) Cleaner Production Case Studies

Environment Protection Agency, C'th (1996) Minimising Waste Through Cleaner Production

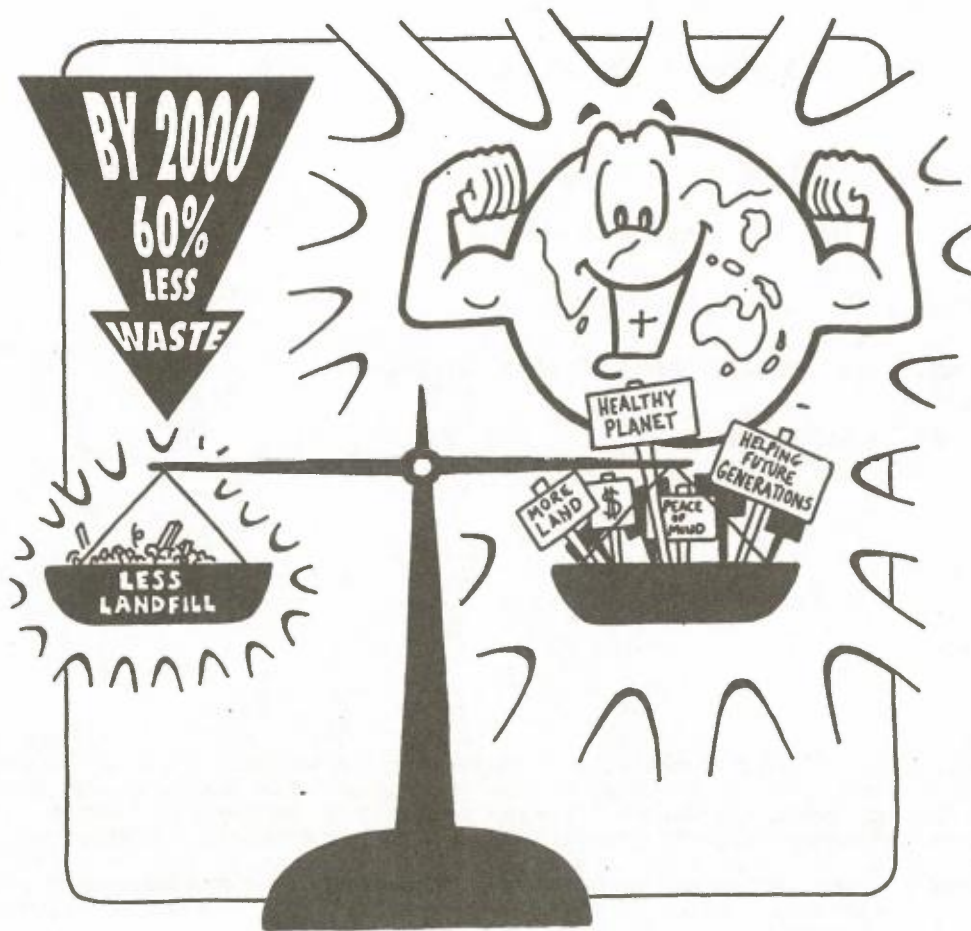
Queensland Cleaner Production Taskforce (1996) Cleaner Production Self Assessment Guide

Waste Management Authority of New South Wales (1990) Waste Planning for Industry – A Guide

WHEN LESS = MORE MANUAL

Part 2 Self Assessment Guide

This section contains a step by step process for waste minimisation planning. It contains pre-prepared forms that can be photocopied and filled in.



The opinions expressed in this material do not necessarily reflect the policies of the New South Wales Government

Contents

Contents

About the guide.....	1
The four easy steps to minimising waste.....	3
Step 1 – Getting Started.....	4
Step 2 – Plan What to Do.....	6
Step 3 – Implement the Plan.....	11
Step 4 – Keep Track of Your Progress.....	13
Appendix A – Checklist	
Appendix B – Tips for Minimising Waste	
Appendix C – Calculating Cost Savings	
Appendix D – Waste Minimisation Purchasing Policy	
Appendix E – References	

Disclaimer : This manual is a self-assessment guide designed to assist individual industry operators assess waste management performance. It does not take consideration of environmental legislation that may be relevant to each site. Business operators with particular concerns regarding legal obligations for their site should contact the New South Wales Environment Protection Authority, New South Wales Chamber of Commerce, Australian Chamber of Manufacturers, their local council or seek specialised legal advice.

The Central Coast Waste Management and Planning Board, Centre for Environmental Solutions, directors, authors or any other persons involved in the preparation and distribution of this publication expressly disclaim any form of liability to any person in respect of the publication and any consequences arising from its use by any person.

About the Guide

This booklet is the how-to part of Central Coast Waste Board (CCWB) waste minimisation resource manual. It is a self-assessment guide that contains step by step suggestions on how to reduce resource wastage in your business.

Working through this process will help with designing, managing and evaluating your waste minimisation program in a way that is realistic, achievable and successful.

The guide does this by asking questions and prompting thoughts on what to do. It assists in determining what can be achieved and how to measure progress and success.

Waste minimisation pays dividends economically and environmentally both in the short and long term. In the short term, businesses are not faced with expensive and end-of-pipe solutions that cost money to install and continue to cost throughout their lifetime. Working through the process can also save you time, effort and money in the long run by minimising inputs and reducing wastes.



Businesses that have participated in the pilot project and similar programs elsewhere have experienced:

- Cost savings*
- Improved efficiency and productivity*
- Better environmental performance*
- Positive publicity and image*
- Reduced liability*
- Increased staff morale, and*
- Better workplace health and safety*

Following the steps in this guide will help you to determine whether resources are being used efficiently in your business. It will also enable you to identify and cost strategies for improvement. Pre-prepared forms are supplied in the guide and can be photocopied when developing your plan. Case studies and reference information are full of good ideas and can be found in other parts of the manual.

Begin at whichever part of the manual looks relevant and take time to work through it. Remember, this guide is meant to be helpful and useful, not a chore. It may be easier to work through the guide in stages or with someone outside your business.

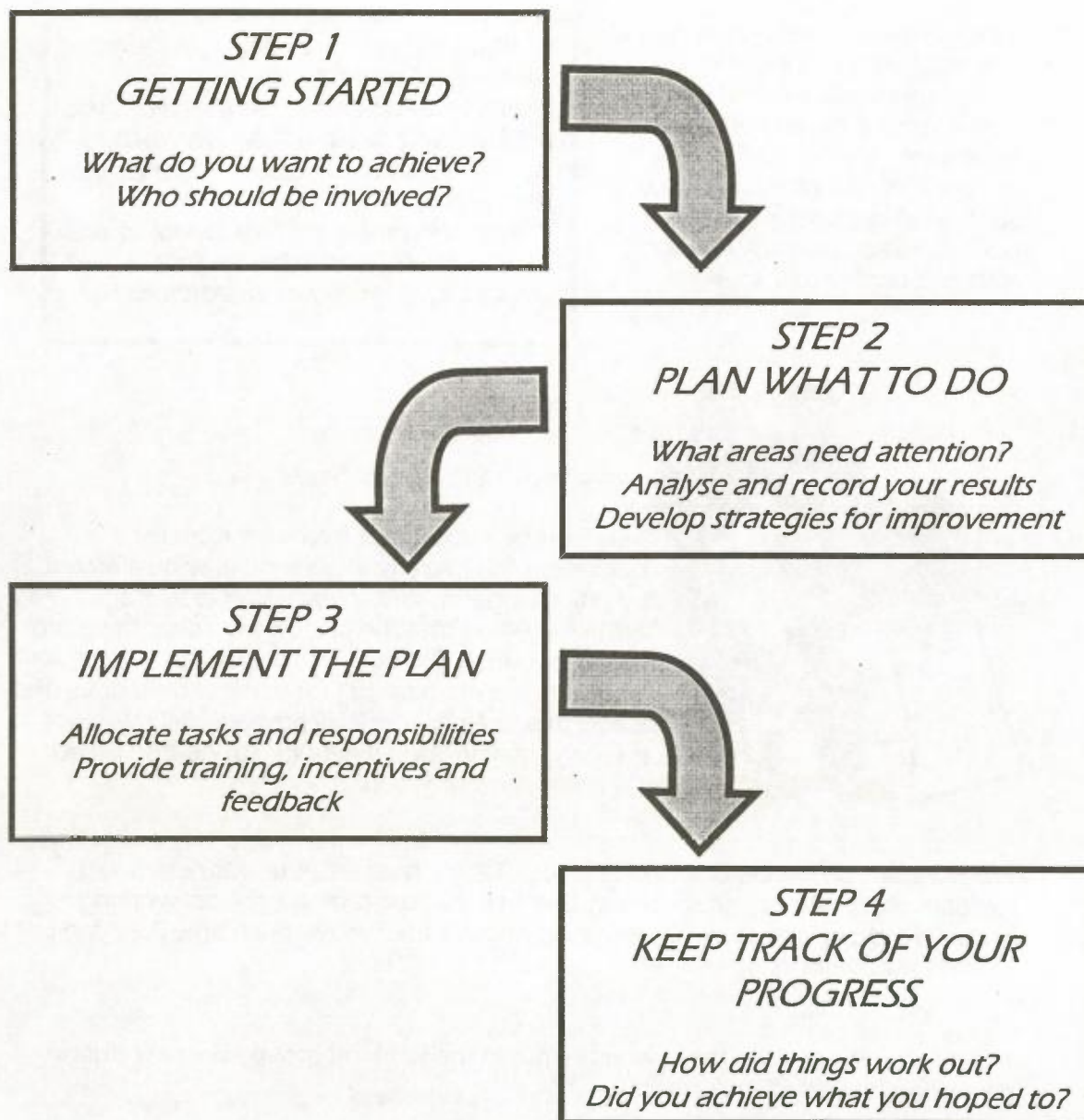
Keep things as simple as possible and stick to what's important. There are no right or wrong answers – this guide is about learning from actions and experiences and finding out what is the best for your business.

Participation in this process is entirely voluntary and is not required by any law.

For further information about how to effectively use this guide, contact the Central Coast Waste Board on (02) 4323 4343.

The 4 Easy Steps to Minimising Waste

There is no set formula for maximizing resource efficiency because each business is different and has different needs. The steps in this guide are a recommended basic approach for waste minimisation planning and some components may not be relevant to your business. If this occurs as you work through the steps, simply adjust the step accordingly or move onto the next one.



*Remember when planning, always
start with the end in mind!!!*

Step 1 - Getting started

What do you want to change?

You must first ask yourself what do you want to change in your business and what you are trying to achieve with the project. Who needs to be involved? Do you have a deadline?

Who should be involved?

Obtain management support and commitment. Management involvement and support from the start of your planning process is important. Managers can encourage, motivate and direct staff. Management is usually needed to approve any financial, staff and contractual changes.

- * Whose help is needed to achieve meaningful results?
- * Who must be convinced that what you are planning to do will be worthwhile - eg. landlord, lessee, franchiser, management?
- * Who should be kept informed so that they will support the project - eg. tenants, staff, government agencies?



Involve all staff, from different levels

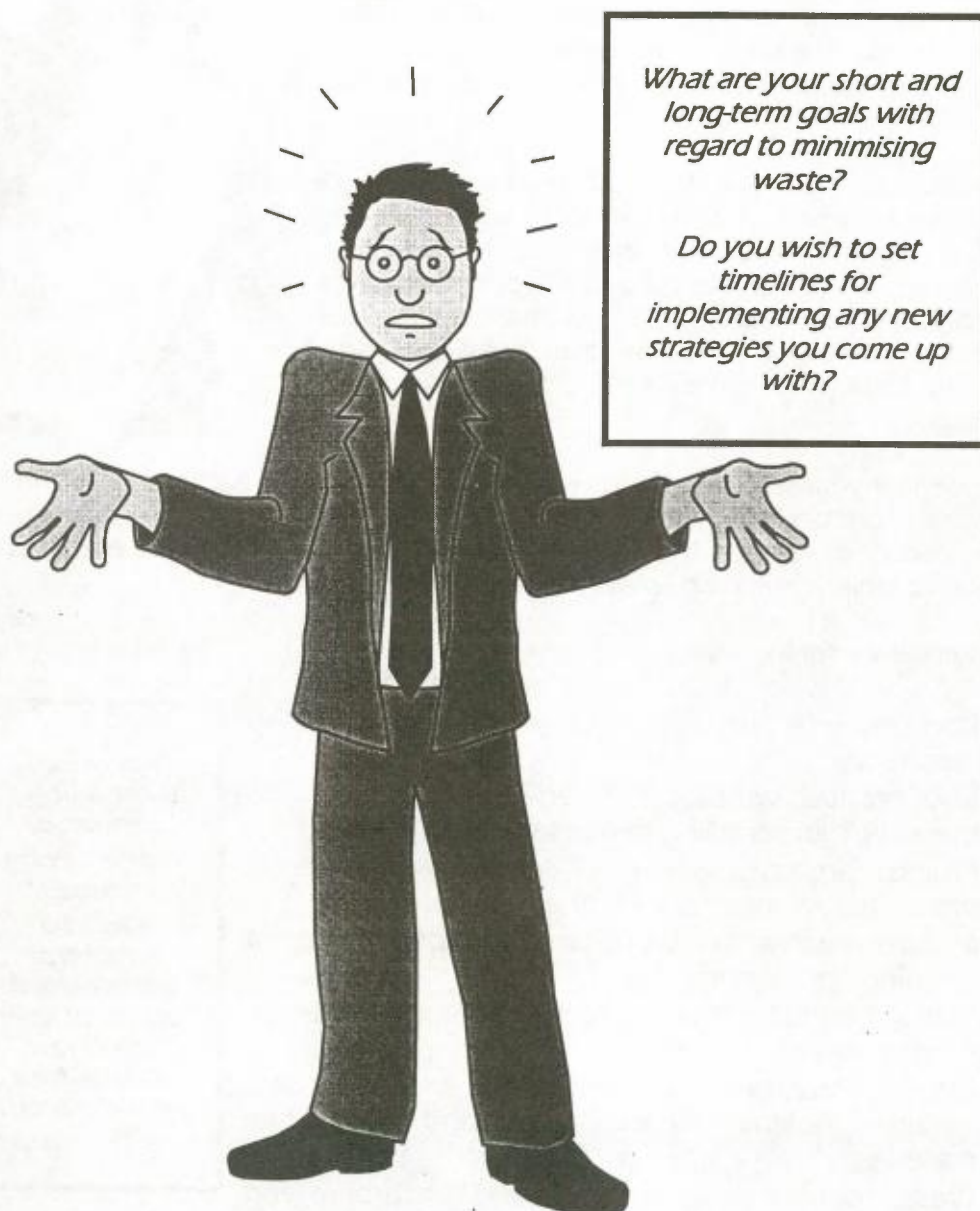
Encourage active input from staff from the beginning (particularly those who may be affected by any changes made). Involve staff in all stages. You are likely to find that the person who does the job is the best source of ideas for improvement. These staff are often the "champions", for without their drive and leadership, the program will probably fail. Ways of involving staff include meetings, suggestion boxes, bulletin boards and site tours.

Form a staff committee or working group. Larger businesses or businesses with multiple process lines and shifts may find it useful to establish a special working group. Find out who is available to help and ask them how much time they can put in and for how long.

Provide feedback. Keep those who are not in the working group informed during the various stages of the project.

What is to be achieved?

Clearly identify what is to be accomplished, always start with the end in mind. Talk about what needs to be achieved, why it is important and what it would look like if it resulted in a change for the better. Different people will have different ideas about why the problem has arisen and what needs to be done. It is useful to share these thoughts and views as it can broaden everyone's understanding of the situation, generate a range of ways at looking at things and help avoid conflict as the project develops.



Step 2 - Plan what to do

Identify areas needing attention

In order to manage wastes better, it is important that you have a clear understanding of how resources are managed from the time they are delivered to where they ultimately end up. The following steps will assist you with your analysis.

Undertake a preliminary analysis of your operations. Where are the priority areas for attention? Are they in the workshop, the office or on a particular process line or piece of equipment or a particular section within the workshop?

Examine your workshop or office more closely for evidence of resource wastage. Note what is in the bins, on the floor and being stored. Closely examine the inputs, processes and outputs of your business to identify problem areas. Make a drawing of your premises showing where the problem areas are located. Also indicate where the waste and recycling bins are located.



Do not limit your search to things you might throw in your garbage bin at home or at work. Consider any material outputs that do not leave your business in the form of a product or service. This could be anything from packing sheets and strapping to lawn clippings and food scraps.

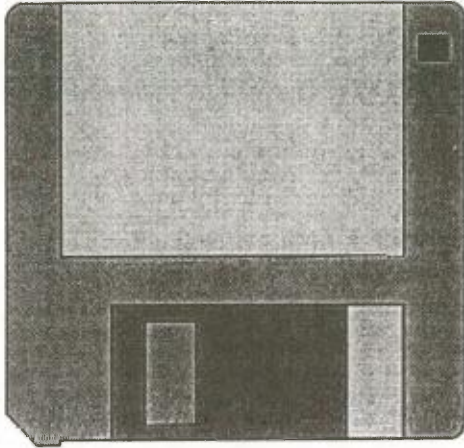
Things to look for include:

- Raw material wastage – Over ordering, ordering incorrectly.
- End product wastage – Over production with no market, products failing to meet specified standards.
- Process problems – Any off-specification or reject products, raw material spills or emissions.
- Maintenance waste – Wastes from equipment or plant cleaning and upkeep.
- Material handling – Any offcuts, packaging materials, drops or overflows.
- Material storage – Contaminated or out-of date materials, potential for knock overs and spills of raw materials.
- Wastes generated by employees – Lunchroom and washroom wastes.
- Waste disposal – Bins, skips, compactors and bales.

*How much waste is being generated?
How is it being managed?
Can it be recycled or reused either in its present form or as a raw material for a second process?*

Not every waste is the same...

Waste habits can change according to different times of the day or week depending on the nature of your operations. Monitor operations at different times, interview staff and note housekeeping practices and general appearance of the site.



Company records are useful and a good starting point...

Gather any background information relating to the wastes. This would include any relevant data from company records, responsible personnel, discussions with staff, material specifications and other relevant documents relating to waste-generating activities performed at the site. Waste docket, transportation records, hazard/environmental assessments and spill incidences are examples of company records that may be useful. Photograph your observations for future reference.

Record your results

Photocopy and enlarge the form in Appendix A and record what you have observed. This not only helps to organize the information you have been collecting in a way that is easier to interpret, but also provides a record against which performance can be measured and referred to when making decisions in the future. You can design your own form if Appendix A is not suitable.

Waste type Column 1

List each waste type in Column 1 according to its material composition.

Waste Quantity Column 2

Next to each waste indicate the amount generated per week, month or year. Annual quantities are usually the most useful. Calculate the percentage of the total waste stream that each material represents. Note any changes in generation due to seasonal or shift variations. Auditing the contents of bins or reviewing company records (eg disposal accounts) are common ways of measuring the quantities of materials being lost from your operations. A cruder technique is to estimate quantities by looking in your bins.

Useful Hint

Percentages will help you work out which wastes are priorities. Try presenting your results in a pie chart or graph

Waste source.....Column 3

Note any sources (eg operations, processes or behaviours) that led to the generation of each waste type.

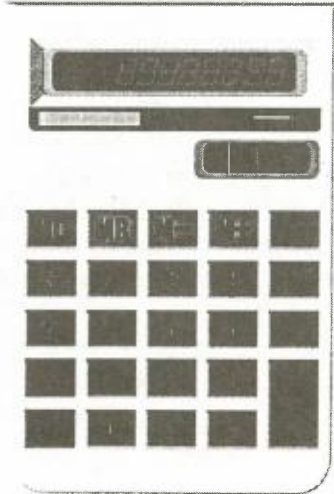
Current practices.....Column 4

Describe what you currently do to manage each source of waste. How is it avoided, recycled, disposed of or returned? Do you sell or give it away to someone else?

If you have a waste or recycling collection service, record the:

- Contractor name and contact details
- Number of collections per week
- The bin type/s
- The collection times and days
- Contract expiry date

Current costs



Costs must be accounted for to enable effective management decisions. Knowing your current costs is also particularly important for working out what savings can potentially be made.

For each waste material, record any relevant costs associated with:

- Raw material wastage
- Storage
- Handling
- Transportation
- Treatment
- Disposal
- Labour

These costs are most easily obtained from company records and accounts. If you have a waste or recycling collection service, record the:

- Bin hire charge
- Service hire charge
- Tipping fees
- Total cost per annum

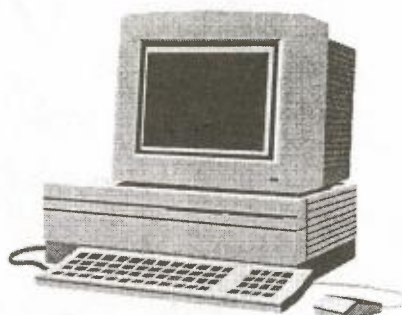
Analyse your results

Priority level..... Column 5

Once your audit has been completed, it is likely that a number of different wastes and pollutants will be identified. Look at your results, decide which areas are in need of improvement and prioritize them. Refer back to the objectives you established in the section "Decide What you Want to Achieve" when determining which wastes are priorities.

For each waste, indicate whether it is a low medium or high priority. To help you do this, consider which wastes:

- Are costing you more to manage, ie in terms of raw material wastage, storage, handling, treatment, disposal and associated costs
- Are causing the most damage to the environment
- Can be most easily avoided
- Can be used in another operation on site or elsewhere
- Have legislative requirements, or
- Are the most hazardous or toxic?

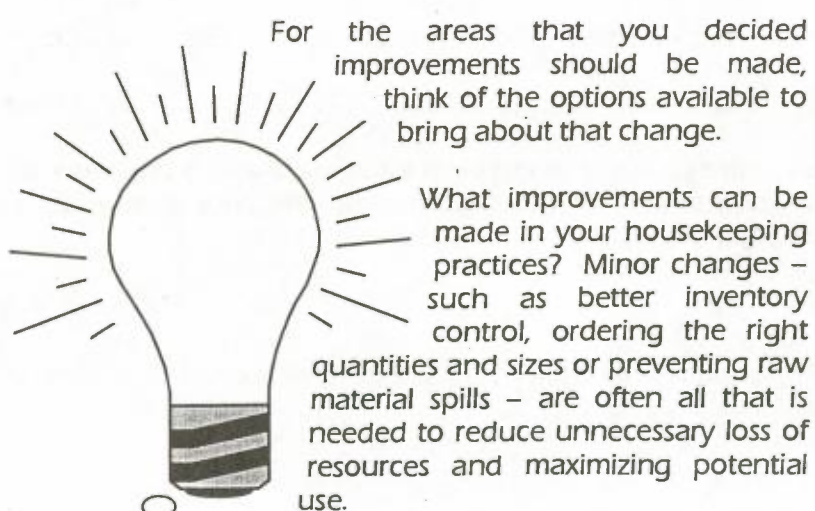


Set goals for minimisation.....Column 6

Define a goal for each waste type (state what you are hoping to achieve).

Develop strategies for improvement

Strategies/ideas for improvement.....Column 7



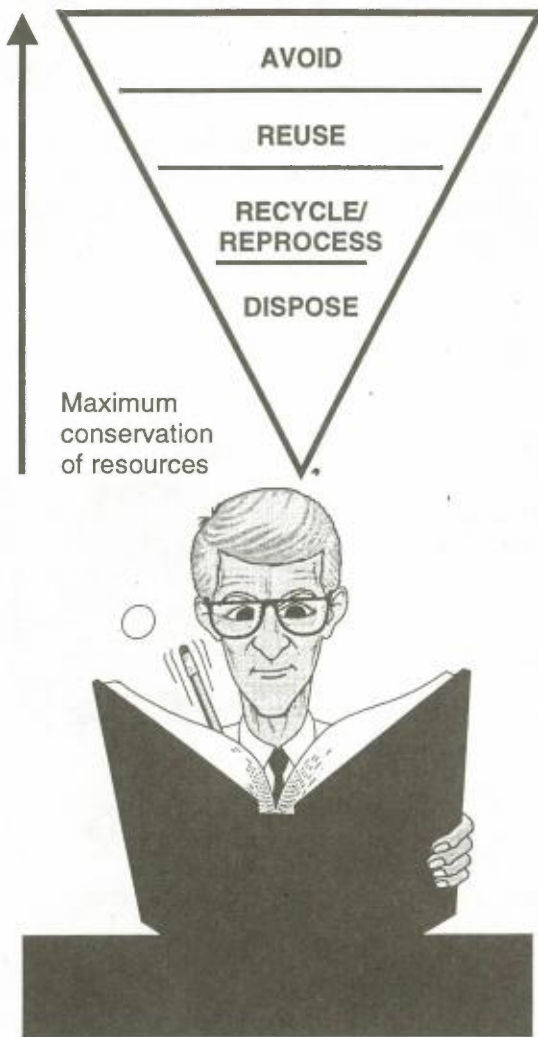
Be as creative as you can when thinking of options. Work your way through the waste minimisation hierarchy below and Appendix B for ideas. Try to consider how the wastes were *created* rather than how they can be treated.

Example

Timber waste can be avoided through improved design, reused in new products in another process, or resold as firewood to local residents

Contact the Waste Board for further information.

THE WASTE MINIMISATION HIERARCHY



Avoid : The first preference in the waste minimisation hierarchy is waste *avoidance*. If the generation of a waste can be completely removed from the process then that is the best approach to take.

If wastes can not be avoided altogether, then try and minimise or eliminate them at the source. For example, you may be able to reduce the quantities of raw materials being used through better resource management.

Reuse: Look for other stages in your production processes where “waste products” can be used as a raw material. Such simple recovery methods may save money in purchasing of raw materials.

Recycle: Recycling of wastes has become an increasingly popular way of minimising waste. Businesses have made substantial savings either directly through the sale of recyclable materials or indirectly by reduced disposal costs.

Disposal: Disposal should be the option of last resort after all possibilities for avoidance, reusing or recycling have been explored.

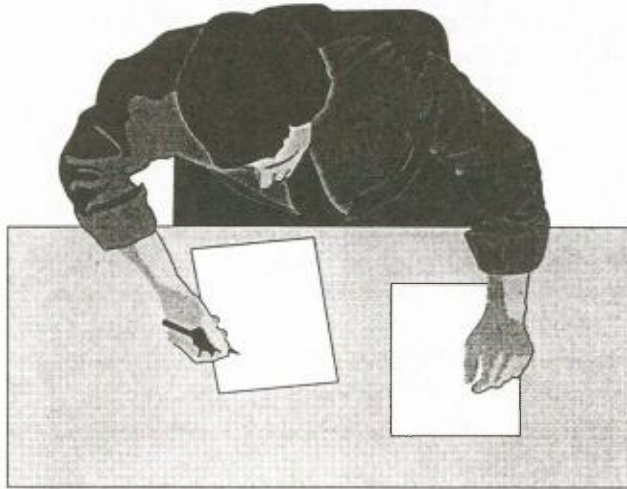
Indicate the policy that each strategy represents..... Column 8

Cost the different options you have identified..... Column 9

Compare costs..... Column 10

Compare the alternative costs to current costs listed in Column 5 and work out how much you are saving through increased production efficiency and reduced waste disposal expenses (Appendix C).

Step 3 - Implement the plan

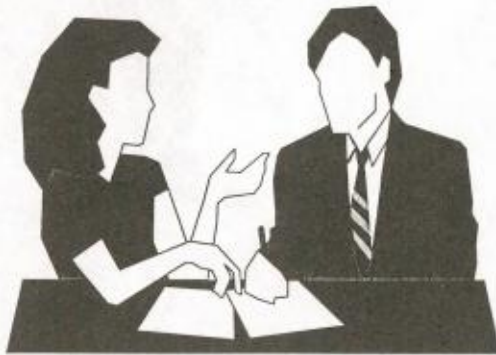


Choose which strategies you will implement first

First priority should be given to the strategies that can be:

- Easily implemented, and
- Have a high positive impact in the achievement of the goals of cost savings and waste reduction and benefit the environment.

Lower priority actions are those which have a lower impact and are harder to implement.

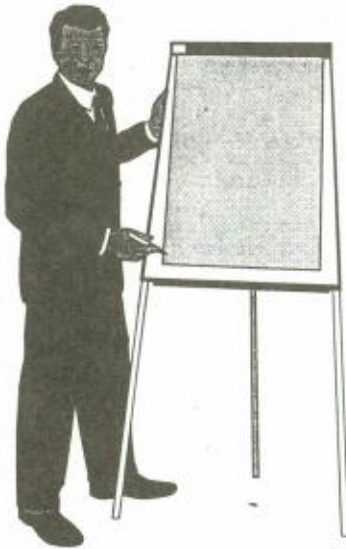


Allocate tasks and responsibilities.

According to the priorities that were determined, allocate tasks and responsibilities to staff to implement the changes. Take this part of the project one step at a time according to the time and financial resources available in your business.

Provide feedback. Keep management and other staff members regularly updated about the project. This will help others understand when any changes occur and how it may affect them. People can be kept informed in a variety of ways such as memos, newsletters or staff meetings and will usually respond best to verbal or visual communication. Present cost savings and waste reduction figures on graphs and display them on pin up boards. Take staff members/management on short site tours to see what's actually in place.

Keeping people informed will help ensure that the project is successful in the long term. Contact the CCWB and local media to let them know how you are going.



Provide training and awareness. Ensure staff are properly trained for any new tasks. This will maximize the success of your strategies for improvement and keep interest and morale high. Contact the CCWB for any training sessions occurring in your area.

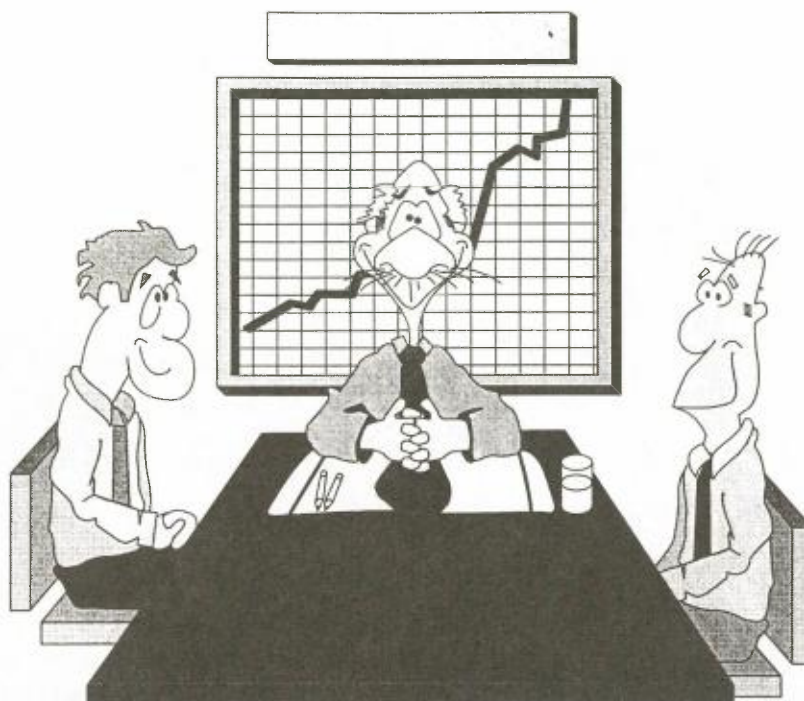
Provide awards and incentives. Some staff will be self-motivated however others may be reluctant to participate. Rewards and incentives will attract interest and encourage a change in attitudes and habits. Reward participation by:

- Acknowledgment of success, participation or contribution
- Awards, certificates or trophies, or
- Prizes as a reward for competition success or participation such as buying drinks with the money saved

Perpetual trophies presented each year may encourage continued participation.



Step 4 - Keep track of your progress



Monitoring and reviewing the results of your new strategies will enable you to measure performance. It is easy to put off keeping records of activities and checking progress but it is necessary if judgements are to be made of the impact they are having.

Display your results on graphs and charts so that staff can see the progress being made, both in terms of business productivity and environmental performance. Publish them in annual reports, the local paper, in newsletters or memos or even on the Internet.

Celebrate your results! Use some of the money saved to reward staff for their efforts. Such simple gestures of appreciation can go a long way towards ensuring your program is a success.

Assess what you have done

- Has your action plan successfully achieved your goals by minimising resource wastage?
- Are there any measurable differences in productivity, product quality or staff performance?
- Has the business made any cost savings?

Appendix A: Example – Checklist

1. Waste Type <small>(material type, physical/ chemical properties)</small>	2. Quantity <small>(amount per week, month and annum)</small>	3. Waste Source/s <small>(operation/process)</small>	4. Current Practices <small>(disposal/recycling/re-use/avoidance – describe)</small>	Waste Contractor contact details:							5. Priority <small>H – High M – Medium L – Low</small>
				<i>Recycling Contractor contact details:</i>							
				Bin Type/s	No.Collections per week	Collection day/s	Bin hire charge	Service hire charge	Contract expiry date	Current Cost per annum	
<i>Total waste stream</i>		T/w T/m T/a									
TOTAL		T/w T/m T/a									

6. Goal (reduction target)	7. Strategies & ideas for improvement (options)	8. Policy ? (y/n)			9. Alternative Cost (to implement new strategy)	10. Estimated Cost Saving (current cost less alternative cost)	11. Strategy Adopted? (Y/N)
		Avoid	Reuse	Recycle			
TOTAL SAVINGS						Year 1 \$	
DIFFERENCE						Year 2 \$	
DIFFERENCE						Year 3 \$	

Appendix A (cont.): Example - Checklist

1. Waste Type (material type, physical/ chemical properties)	2. Quantity (amount per week, month and annum)	3. Waste Source/s (operation/process)	4. Current Practices (disposal/recycling/re-use/avoidance – describe)	Waste Contractor contact details:							5. Priority H – High M – Medium L – Low
				Recycling Contractor contact details:							
				Bin Type/s	No. Collections per week	Collection day/s	Bin hire charge	Service hire charge	Contract expiry date	Current Cost per annum	
Metal strapping	2.1 Tonnes per annum (4% of total waste)	Packaging from goods received	None								M
Sawdust & shavings	2.6 T/a (5%)	Cutting & trimming	Collected by poultry farm supplier	Wool bale	2	Mon & Wed	Nil	Nil	NA	Nil	L
Food	2.1 T/a (4%)	Lunch room waste	None								L
Pinewood packaging/sheeting	18.2 T/a (35%)	Packaging from goods received	None								H
Wood offcuts	10.4 T/a (20%)	Cutting & trimming	None								H
Cardboard	8.8 T/a (17%)	Packaging from goods received	None								H
Other	7.8 T/a (15%)	Various	None								M
<i>Total waste stream</i>	1.0 T/w T/m 52.0 T/a		Acme Waste Contractor front lift bin waste collection service	4 x 3 m ³ bins	2	Tue & Thur	\$195 bin per month	\$22 per empty	June 1998	\$ 9360 \$ 9152 \$ 2184 \$20 696	(Hire) (Empty) (Disposal @ \$42/T)
TOTAL	1.0 T/w T/m 52.0 T/a									\$20 696	

6. Goal (reduction target)	7. Strategies & ideas for improvement (options)	8. Policy ? (y/n)			9. Alternative Cost (to implement new strategy)	10. *Estimated Cost Saving (current cost less alternative cost)	11. Strategy Adopted ? (Y/N)
		Avoid	Reuse	Recycle			
To reduce the amount of ferrous materials being discarded by 60% by July 1999	1) Use as strapping on goods being dispatched 2) Separate and take to scrap metal recycler		✓		Nil	\$252.92	Y
				✓	\$600 (labour, bins, transport)	Nil until year 4	N
To minimise sawdust waste from all operations	1) Improve cutting efficiency	✓			\$500 (maintenance investment)	(raw materials) Yr 1 Nil Yr 2 \$500.00 Yr 3 \$1000.00	Y
To avoid the disposal of food scraps from lunch room areas	1) Setup compost bin or worm farm			✓	\$100 (purchase bin)	(disposal) Yr 1 Nil Yr 2 \$76.40 Yr 3 \$164.60	Y
To reduce the amount of pinewood packaging being discarded by 40% by July 1999 and a further 30% by 2000	1) Contact supplier and investigate opportunities for eliminating unnecessary packaging where possible	✓			\$600 (increased stock damage)	Nil	N
	2) Substitute with more recyclable or renewable alternatives eg cardboard	✓			More cardboard waste	(disposal) \$5.76	N
	3) Sell to second hand building supplier			✓		(disposal plus income) \$1215.76	Y
To prevent the generation and disposal of clean pine wood offcuts by 90% by July 1999	1) Improve production efficiency to minimise offcuts being generated	✓			\$500 (maintenance investment)	(disposal) Yr 1 Nil Yr 2 \$286.24 Yr 3 \$679.36	Y
	2) Arrange for collection by landscape gardener for chipping		✓		\$100 (labour/separate)	(disposal) \$293.12	N
	3) Return to supplier for reuse			✓	Unviable (no uses)	NA	N
To prevent the disposal of cardboard by 80% by July 1999	1) Contact supplier and request that unnecessary packaging be avoided on deliveries	✓			Nil	(disposal) \$295.68	Y
	2) Establish a cardboard recycling collection			✓	\$200 (labour/separate)	(disposal) \$95.68	N
	1) Reduce number of garbage bins from 4 to 3				Nil	(bin hire & empty)	Y
	2) Identify further opportunities for waste avoidance	✓			Nil	\$4576.00	
TOTAL SAVINGS						Yr 1 \$6798.60 Yr 2 \$7661.24 Yr 3 \$8642.56	
DIFFERENCE						Yr 1 \$13897.40 Yr 2 \$13034.76 Yr 3 \$12053.44	

* Savings per annum with assumption that July 1999 reduction targets were achieved.

* It is also assumed that there are no increases in tipping or disposal fees, ie if this was the case, further savings could be achieved.

Appendix B: Tips for Minimising Waste

Raw material wastage

- Establish an environmentally sustainable purchasing policy. Appendix D contains an example purchasing policy that can be adapted to suit your business.
- Avoid over ordering or ordering incorrectly
- Try and purchase raw materials that have been produced with the least environmental impact eg plantation timber, or; recycled office paper
- Try and purchase raw materials with the least amount of packaging eg multi-packs or with packaging that has less impact on the environment eg cardboard
- Investigate whether virgin products can be replaced with recycled products

Process problems

- Avoid any raw material spills
- Avoid any off-specification or reject products
- Unnecessary off cuts
- Potential for contamination of reaction mixtures and products
- Inappropriate handling of equipment that results in waste being generated
- Put covers and guards in place to prevent raw material overflows

Maintenance Waste

- Avoid wastes from equipment or plant cleaning
- Ensure pollution control equipment is fully functional and being operated correctly
- Carry out regular checks for signs of wear such as weak spots and leaks. Ensure that machinery is functioning properly and that there are back up systems in place.
- Undertake preventative maintenance on a regular basis wherever possible
- Keep handling and production areas free of dirt and waste to avoid contamination

Material handling

- Avoid potential for spills, drops, or overflows (eg. drum lifts, funnels, conveyors, hoppers)
- Avoid the need for excessive material handling
- Potential for contamination of reaction mixtures and products during handling
- Develop procedures (eg for minimising spills)

Material storage

- Avoid inappropriate storage of materials. Can they be knocked over or spilled?
- Avoid contaminated or out-of date materials
- Avoid potential for knock overs and spills in storage areas

Wastes generated by employees

- Avoid lunchroom and washroom wastes
- Avoid cigarette butt waste – establish a no-smoking policy
- Write environmental concerns into the job specification of an influential employee

End product wastage

- Avoid overproduction with no market
- Avoid products that do not meet specified standards

New processes and technology

- Change process technology to a “cleaner” production process
- Design products that require less raw materials in their production
- Investigate alternatives that generate less waste or waste of a less toxic nature
- Consult trade associations and attend trade industry nights for benchmark technologies
- Replace or service inefficient or malfunctioning equipment
- Investigate ways to optimize reaction efficiency
- Design products that utilize recovered or recycled materials
- Design products to be recyclable
- Investigate recycling potential of various waste products

Reusing and recycling wastes

- Consider reusing materials/items one or more times on site before discarding
- Reuse materials for an alternative purpose on site
- Reorganize waste separation areas to improve efficiency, prevent contamination and maximize returns on recyclables
- Set up workplace recycling areas. Ensure they are highly visible, convenient and easy to use.
- Segregate different waste materials so that recoverable materials can be removed before disposal
- Renovate a waste storage site to include a storage tank surrounded by a bunded area and implement technology to recycle a major waste product
- Reduce the volume of waste by mechanical means (eg shredding or crushing). Determine potential waste disposal cost savings as a result of volume reduction measures.
- Reduce waste toxicity before disposal by treating it (eg encapsulation; air cleaning equipment on stacks)
- Facilitate the use of wastes by community groups, kindergartens, schools and charities, etc

PR, training and awareness

- Provide staff/tenants with regular newsletters or memos
- Make employees more aware of environmental issues and emergency procedures in case of accidents eg an oil spill
- Start a monthly award program for staff and tenants. Display each month's winner on a public notice board
- Visit other companies that have implemented waste minimisation programs
- Ensure that recycling and garbage bins are easy to tell apart – use different coloured bins and signs and make sure the signs are large, in a prominent position and easy to understand.

Appendix C: Calculating cost savings

Adapted from *Australian Chamber of Manufacturers (1993) Environment Management Handbook for Small Industry*.

You can estimate cost savings in two ways:

1. Increased production efficiency:

Cost per unit of raw materials	\$
Reduction in amount of raw material used or lost	\$
<hr/>	
Saving = (cost per unit) x (reduction)	\$

OR

Revenue per unit product	\$
Increase in amount of product produced	\$
<hr/>	
Profit = (revenue per unit) x (increased production)	\$

2. Reduced waste disposal

Disposal cost per unit of waste	\$
Reduction in amount of waste	\$
<hr/>	
Saving = (unit disposal cost) x (waste reduction)	\$

Some potential cost saving suggestions include:

- Reduce the number of waste collections per week
- Avoid unnecessary empties when bins are not full. Request that bins be only emptied when they are full.
- Use smaller bins if the frequency of collections cannot be reduced
- Check the prices of other waste and recycling contractors regularly to compare prices (see the list in this manual or consult the Yellow Pages)
- If entering a contract situation, ensure that your bin hire and collection fees are reasonable and competitive – find out what your neighbours are using and paying; you may be surprised
- If possible, try and avoid contracts that limit flexibility for altering waste arrangements in the future

Appendix D: Waste Minimisation Purchasing Policy

Policy Statement

Where the purchasing department is intending to purchase a good that has a recycled/recyclable alternative, the recycled/recyclable alternative shall be given preference where all evaluation criteria are equal.

Where the price of a viable recycled/recyclable alternative is higher than a non-recycled/recyclable good, but all other evaluation criteria are equal, the purchase decision shall be progressed in accordance with policy guidelines.

Policy guidelines

Recycling is seen as a practical way of conserving resources and reducing waste thereby playing an important role in protecting the environment and achieving ecologically sustainable development.

Recycling is a process by which used materials can be:

- Reused in their original form, eg refillable bottles, or;
- Reprocessed into products with value, eg recycled bottles

Recycling enables raw materials and energy to be conserved, cuts disposal costs, reduces greenhouse gas emissions and has the added social and economic benefit of creating employment.

Businesses are encouraged to support recycling as a way of protecting the environment by increasing and maintaining recycling activities and by purchasing and using recycled/recyclable goods where practicable.

Accordingly, businesses should:

- Give preference to recycled/recyclable goods if they are available at the same or lower price that similar quality goods made of virgin materials
- Give preference to recycled/recyclable goods unless there are valid technical reasons for not doing so, and;
- Give preference to equipment which can use consumables made from recycled/recyclable materials

Where possible:

- Choose reusable/durable items over disposables
- Choose items with less or no packaging
- Give preference to items packed in renewable packaging such as paper or cardboard
- Purchase equipment that produces the least amount of waste eg. Photocopy machines that have a "double side" function.

Adapted from: Department of Commerce and Trade and the Western Australian Municipal Association (1993) State Recycling Blueprint - A Plan to Halve Waste to Landfill in Western Australia by the Year 2000.

Appendix E: References

Australian Chamber of Manufacturers (1993) Environment Management Handbook for Small Industry

Central Coast Waste Planning and Management Board (1998) Central Coast Draft Regional Waste Plan, September 1997.

Department of Commerce and Trade and the Western Australian Municipal Association (1993) State Recycling Blueprint – A Plan to Halve Waste to Landfill in Western Australia by the Year 2000.

Environment Protection Agency, C'th (1996) Cleaner Production Case Studies

Environment Protection Agency, C'th (1996) Minimising Waste Through Cleaner Production

Queensland Cleaner Production Taskforce (1996) Cleaner Production Self Assessment Guide

National Landcare Program (199*) Setting Up for Success – A Guide for Designing, Managing and Evaluating Projects

Waste Management Authority of New South Wales (1990) Waste Planning for Industry – A Guide
Sources:

NSW Waste Minimisation Guidelines for Small Business

INDUSTRY CASE STUDY: CARAVAN PARKS

East's Ocean Beach Caravan Park Umina, New South Wales

EAST'S
Ocean Beach
CARAVAN PARK
SYDNEY AVENUE, UMINA, NSW 2257
PHONE (043) 41 1522 • FAX (043) 41 4855
A/C 00 21 20

East's Ocean Beach Caravan Park is the largest caravan park on the Central Coast classified as a holiday park, and has been in its current location for over 20 years. It has available approximately 500 sites comprising cabins, tents, tourist sites and private holiday vans. During peak holiday periods up to 3,000 people can be accommodated at the park at any one time. The park is uniquely situated with absolute beach frontage, it is therefore a popular holiday destination with a regular clientele predominantly from Sydney.

East's Ocean Beach Caravan Park is one of 11 caravan parks operated by the extended East's family group, which started business some 60 years ago at Kiama. The park is maintained to an exceedingly high standard with manicured surrounds and situated beneath a magnificent timber canopy. The park was the 1998 winner of the Tourist Council of Australia New South Wales of the caravan and camping category and has also won the Central Coast Tourism Award for the last four years.

A representative from East's attended a waste reduction seminar organised by the Central Coast Waste Board for local caravan park owners and managers in July 1998, introducing the "When Less = More" manual. East's went away inspired and put the manual to use and explored all the options in establishing a recycling system that would compliment the already natural beauty of the park.

Three new recycling stations have been incorporated into the park infrastructure in late September 1998. Management has spent considerable money to ensure that the bins are both practical and attractive. They have stencil-crete paths, coloured compound slabs, lattice surrounds, colour-coded stickers and gardens to ensure the recycling area is in keeping with its surrounds. Customised signs compliment the other signs throughout the park.



"Nothing is Wasted on the Central Coast"

The coloured coded wheelie bins are provided with adhesive labels indicating which materials should be placed in each. Recyclables are separated by material type and colour for example, brown glass, clear glass and green glass, aluminium cans and mixed paper.

Bins are serviced weekly by a local recycling contractor ASD Paper Recyclers during normal off-peak periods, with the service level increased in holiday periods. A bin exchange program has been introduced whereby all bins are removed and replaced with empty bins for each collection service. Park staff check the bins each morning and afternoon and remove any visible contamination, for example PET or plastic bags. ASD is very pleased with the low levels of contamination.

The park community is keen to recycle more materials including PET and milk cartons. This is restricted at the moment, as the current contractor does not deal in these commodities.

The infrastructure has a pay-back period of approximately five years based on current landfill pricing representing a 15% saving will be achieved through the avoided disposal cost. Last year waste disposal costs increased by 20% over the previous year and these fees are likely to continue to escalate so the payback could be achieved much quicker depending upon landfill charges.

Through recycling initiatives, approximately 65 tonnes per annum will be diverted from landfill indicating a recycling diversion rate of 35%, this currently falls short of the 60% target enshrined in the state *Waste Minimisation and Management Act 1995*.

The Manager of the Park, Peter East, has indicated that this is the first of a number of waste reduction initiatives to be developed within the park. 'I think this is one of the smartest cost saving and environmentally friendly moves that we have ever made and I have no regrets at all. I would like to thank the Central Coast Waste Board for steering us in the right direction and complimenting the work achieved to date' he said.

Recycling participation is lower in the on site cabins as visitors have their own bathrooms and bins and are not required to visit the amenities block adjacent to which the recycling stations are located and therefore may not be aware of their existence. Park management hope that the camping and cabin users will separate waste and take it to the recycling facilities and this will then lead to an increased recycling diversion.

Peter's next plan is to embark on an on-site composting program for all garden waste produced on the site. With this initiative, the 60% target is clearly within reach.

Contact Person: Peter East - Manager
Address: Sydney Avenue, Umina
Phone Number: 02 4341 1522

The Central Coast Caravan and Camping Industry Association may also be contacted via Darrell Smith from Valhalla Home Village on 02 4358 1833 during normal business hours.

Also, "Waste Minimisation for Caravan Parks" - Shoalhaven City Council - 02 4429 3127

The opinions expressed in this material do not necessarily reflect the policies of the New South Wales Government

"Nothing is Wasted on the Central Coast"

INDUSTRY CASE STUDY: RETAIL SHOPPING CENTRE

Erina Fair Shopping Complex Erina New South Wales



Erina Fair Shopping Complex is the largest regional complex on the Central Coast comprising 178 individual retail outlets and is a member of the Land Lease group. However, 11 of these outlets provide their own waste management facilities and therefore Centre management provides services for 167 retail tenants. Erina Fair provides waste and recycling facilities for all non-major tenants within the centre complex. These facilities involve the provision of 4 x 23m³ roll on roll off compactor's, which are designated for wet waste and cardboard. The compactor's are located in two loading docks and all tenants are required to bring their waste and recycling to the docks and self load into the compactor units.

Erina Fair was a pilot business and elected to participate in the commercial industrial sector Waste Avoidance Project by the Central Coast Waste Board undertaken from March to June 1998. A waste audit conducted in March 1998 as part of the project identified key waste generators and determined that 34% of the waste stream was currently diverted from landfill through the use of the existing cardboard and paper compactor. However, the wet waste stream comprised 57% of recyclable material.

A cost benefit analysis demonstrated a saving in current waste management costs of up to 28% could be achieved through more efficient use of existing infrastructure and a reduction in the service levels by 50% to the wet waste compactors. This translates to savings up to \$26,500 per annum.

Representatives from Erina Fair attended a waste reduction seminar organised by the Central Coast Waste Board for retail shopping centres in July 1998, introducing the "When Less = More" manual. Erina Fair was interested in the concept of trialing a recycling system for use by tenants only.

A trial of alternative waste management operations was implemented over a period of one month from the 21st September, 1998 to 16th October, 1998. It was found that savings of 24.5% or \$21,296 per annum could be achieved as the service levels were reduced by 37.5%, not the estimated 50%.

During the trial, the weights of the individual compactor units were identified and the service level reduced. A 3m³ bulk bin was provided in each loading dock with labels indicating the recycling of glass, aluminum, steel, PET and HDPE containers. The bulk bins attracted low levels of contamination which were easily visible and the greatest quantity of material collected was opaque 2 litre milk and juice containers. Over the period of the trial approximately 8m³ of bulk containers were source separated.

A set of wool packs were installed in each loading dock and customised signs were developed and printed on metal attached to the frame indicating the type of material to be recycled including plastic wrap and film. Over the period of one month, 20 bales were removed from the site and consideration is now being given to installing a baler to consolidate the plastic and reduce collection time and cost.

Following the introduction of source separation recycling programs for recyclable containers, plastic wrap and film the overall saving on current waste management costs for the centre is predicted to be 16% or \$ 19,216 per annum.

"Nothing is Wasted on the Central Coast"



Picture of bins and wool bales at Erina Fair

Erina Fair management have decided to continue the trial on a permanent basis, reducing the service level by 37.5% and concentrating on keeping the low contamination rate through regular newsletters and personalised communication. The Central Coast Waste Board will continue to play an active role assisting Erina Fair achieve significant waste reduction through displays.

The Property Manager of Erina Fair, Jim McCreddie, has indicated that this is the first of a number of waste reduction initiatives to be developed within the complex. A funding allocation has been made to install public place recycling bins in the two food court areas where a large amount of beverage containers are generated. "The Central Coast Waste Board is to be congratulated for highlighting to us the importance of identifying wastes that can be avoided, re-used and recycled," he said.

Contact Person: Jim McCreddie - Property Manager
Address: Erina Fair Management Office, Terrigal Drive, Erina
Phone Number: 02 4365 1266

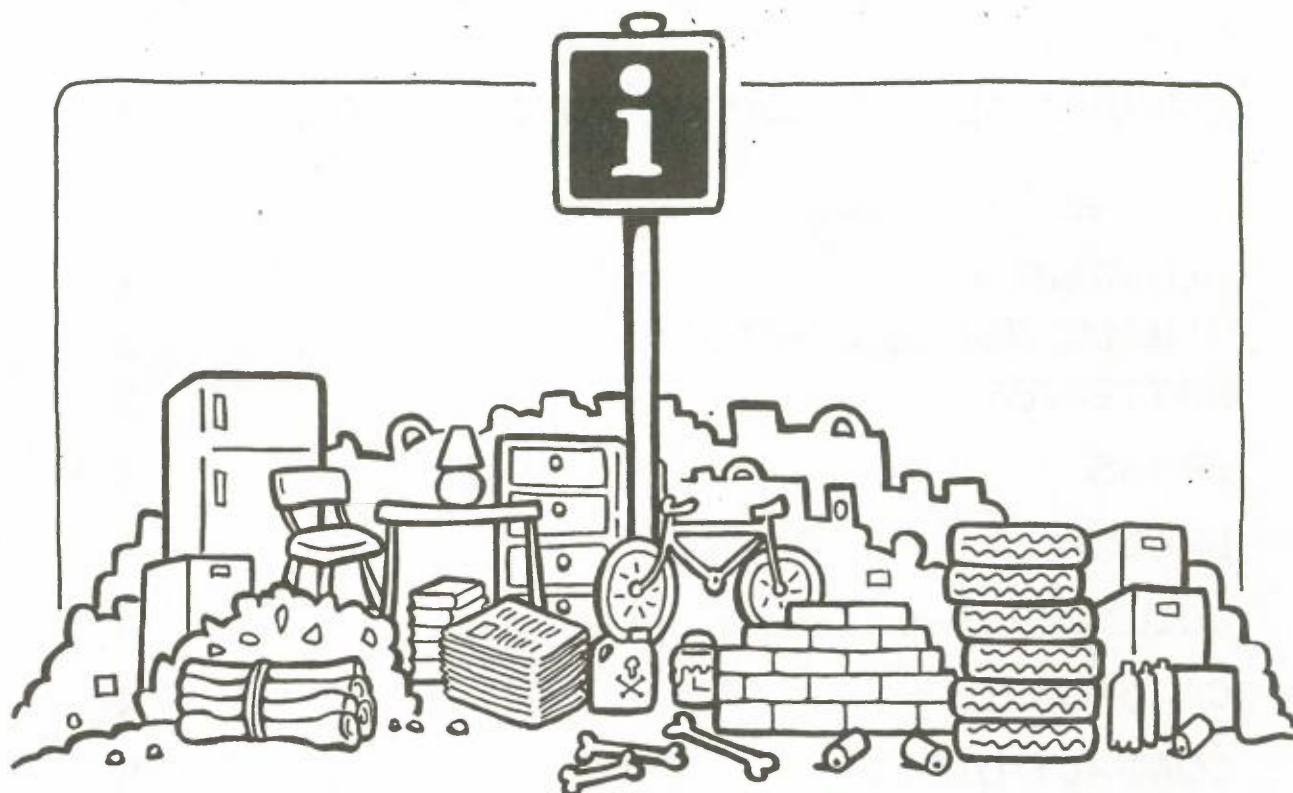


The opinions expressed in this material do not necessarily reflect the policies of the New South Wales Government

"Nothing is Wasted on the Central Coast"

WASTE INFORMATION GUIDE

WASTE INFORMATION GUIDE



Your guide to;

- environmental centres
- material recyclers/receivers
- second-hand good merchants
- waste removal

in the Central Coast Region and surrounds, incorporating Gosford and Wyong Councils.



Proudly presented by the Central Coast Waste Board

"NOTHING IS WASTED ON THE CENTRAL COAST"

"Nothing is Wasted on the Central Coast"

Table of Contents

	PAGE
Environment Centre	
ENVIRONMENT RESOURCE INFORMATION	1
Material Recycler/Receiver	
ALUMINIUM	1
ANIMAL BONES & FATS	2
BATTERIES	3
BRASS	3
BRICKS	4
BUILDING (see Bricks, Construction and Timber)	4
CARDBOARD	4
COMPACT DISCS	5
CONCRETE	5
CONSTRUCTION	6
COPPER	6
GARDEN WASTE (includes grass clippings, weeds, branches, tree trunks)	7
GLASS	7
GREASE TRAP WASTE	8
GUNMETAL	9
LEAD	9
METALS	10
OILS	10
ORGANIC MATERIAL (includes worms)	11

	PAGE
PAPER	12
PLASTIC	14
POLYURETHANE FOAM	15
RADIATORS	15
STEEL	16
TIMBER	17
TYRES	17
WOOD PALLETS (see Timber)	18
ZINC	18
Second-hand Goods	
BOOKS	19
CLOTHING	20
COMPUTER EQUIPMENT	21
CONSTRUCTION	21
CRAFT MATERIALS	22
FURNITURE	22
GENERAL HOUSEHOLD	23
MUSIC RECORDS	24
OFFICE EQUIPMENT	25
SPORTING GOODS	25
WHITEGOODS	26

	PAGE
Waste Removal/Collector	
CHEMICALS	27
CONSTRUCTION	27
GENERAL HOUSEHOLD WASTE	29
GREASE TRAP WASTE	31
GREEN WASTE	32
HOSPITAL WASTE	35
OILS	35

*****Environment Centre*******ENVIRONMENT RESOURCE INFORMATION**

Rumbalara Field Studies Centre	Contact Name	Mark Attwool
Donnison St	Phone	02 4324 7200
Gosford		
Mon-Fri 9-4pm		

Woy Woy Environment Centre	Contact Name	Beryl Strom
Cnr Blackwall Rd and Billabong	Phone	02 4360 1024
Woy Woy	Fax	02 4360 1024
Mon-Fri 1-4pm (Depending on volunteers)		

*****Material Recycler/Receiver*******ALUMINIUM**

ASD Paper Recyclers	Contact Name	Kevin Price
458 Pacific Hwy	Phone	02 4351 1566
Wyong	Fax	02 4351 1525
Mon-Fri 7.30-3pm		

BJ Howes/ Gosford Scrap Metal	Contact Name	Michael Howes
932 Pacific Hwy	Phone	02 4328 2366
Lisarow	Fax	02 4328 5630
Mon-Fri 8-5pm, Sat 8-4pm		

East Gosford Soccer Club	Contact Name	
Hylton Moore Park, Russell St	Phone	4323 2545
East Gosford		
Drop off in cage near clubhouse		

Gwandalan Lions Club	Contact Name	Frances Fletcher
Lions Den, Winbin Crescent	Phone	02 4359 2252
Gwandalan		
Drop off aluminium cans between 9am and 12 noon, ring for details		

McCallisters Metal Recyclers

Unit 4/504 Pacific Hwy
 North Wyong
 Mon-Fri 8:30 - 4pm, Sat 8:30-12

Contact Name Wayne McCallister
Phone 02 4351 1005
Fax 02 4351 1205
Mobile 0412 427 574

Metalcorp Recyclers

902 Pacific Hwy
 Lisarow
 Mon-Fri 7:30-5pm, Sat 8-12

Contact Name
Phone 02 4328 1022
Fax

Nonferral P/L

116 Newcastle Rd
 Wallsend
 Mon-Fri 7:30-5pm, Sat 8-12

Contact Name
Phone 02 4928 2522
Fax
Mobile

Simsmetal

Cormorant Rd
 Koorogang Island

Contact Name
Phone 02 4928 2522
Fax

SMS Municipal Services

13 Lucca Rd
 Wyong
 24hrs 7days drop off (Household quantities)

Contact Name Louise Greenaway
Phone 02 4351 9000
Fax 02 4351 9007

Toukley Lions Club

Lions Clubhouse, Ray Street
 Lions Clubhouse, East Toukley
 Drop off aluminium cans at clubhouse

Contact Name
Phone

ANIMAL BONES & FATS

AJ Bush & Sons

45 Parramatta Rd
 Homebush
 Mon - Fri 8-5pm

Contact Name Cam Wilkenson
Phone 02 9746 0356
Fax

Bird Bros

73 O'Riordian St
 Alexandria
 Mon-Sat 6am-10pm

Contact Name Dennis Moore
Phone 02 9667 4639
Fax 02 9667 4871

BATTERIES

BJ Howes/ Gosford Scrap Metal

932 Pacific Hwy
Lisarow
Mon-Fri 8-5pm, Sat 8-4pm

Contact Name Michael Howes
Phone 02 4328 2366
Fax 02 4328 5630

Marshall Batteries

Unit 1/356 Mann St
West Gosford
Mon-Fri 8-5pm, Sat 8-12
Free lead acid (car) battery drop off

Contact Name Wayne Hutchens
Phone 02 4324 5584
Fax

McCallisters Metal Recyclers

Unit 4/504 Pacific Hwy
North Wyong
Mon-Fri 8:30 - 4pm, Sat 8:30-12

Contact Name Wayne McCallister
Phone 02 4351 1005
Fax 02 4351 1205
Mobile 0412 427 574

Pulse Guard P/L

102 Reeves St
Narara
Mon - Fri 9-5pm
Nicad and lead acid battery reconditioning

Contact Name Greg George
Phone 02 4325 1091
Fax 02 4323 4650

Simsmetal

Cormorant Rd
Koorogang Island

Contact Name
Phone 02 4928 2522
Fax

BRASS

BJ Howes/ Gosford Scrap Metal

932 Pacific Hwy
Lisarow
Mon-Fri 8-5pm, Sat 8-4pm

Contact Name Michael Howes
Phone 02 4328 2366
Fax 02 4328 5630

McCallisters Metal Recyclers

Unit 4/504 Pacific Hwy
North Wyong
Mon-Fri 8:30 - 4pm, Sat 8:30-12

Contact Name Wayne McCallister
Phone 02 4351 1005
Fax 02 4351 1205
Mobile 0412 427 574

Metalcorp Recyclers

902 Pacific Hwy
Lisarow
Mon-Fri 7:30-5, Sat 8-12

Contact Name

Phone 02 4328 1022
Fax
Mobile

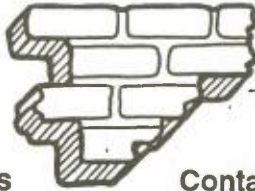
Simsmetal

Cormorant Rd
Koorogang Island

Contact Name

Phone 02 4928 2522
Fax

BRICKS

**Concrete, Brick & Soil Recyclers**

Lot 60 Donaldson St
North Wyong
Mon-Fri 7-5pm, Sat 7-1pm

Contact Name

Phone 02 4353 2540
Fax
Mobile 0414 676981

Lake Macquarie Second Hand Building Materials

Lot 1, Kayunga Close
Swansea

Contact Name

Phone 02 4972 1492

Rexdor P/L

Kerns Rd
Kincumber
Mon-Fri 7-5pm, Sat 7-1pm

Contact Name

Phone 02 4368 1347
Fax 02 4368 2667
Mobile

BUILDING (see Bricks, Construction and Timber)

CARDBOARD

Amcor Australian Paper

56 Kallaroo Rd
Redhead

Contact Name

Phone 02 4942 6422
Fax 02 4942 6272

ASD Paper Recyclers

458 Pacific Hwy

Contact Name

Phone 02 4351 1566

Wyong	Fax	02 4351 1525
Mon-Fri 7:30-3pm	Mobile	

Reverse Garbage	Contact Name	John Street, Steven
Building 149 Addison St	Phone	02 9569 3132
Marrickville	Fax	
Mon-Fri 8-5pm, Sat 8-12	Mobile	

SMS Municipal Services	Contact Name	Louise Greenaway
13 Lucca Rd	Phone	02 4351 9000
Wyong	Fax	02 4351 9007
24hrs 7days drop off (Household quantities)	Mobile	

Waste and Resource Network	Contact Name	George Wells
35-37 Vallance St Dunheved	Phone	02 9833 4503
St Marys	Fax	02 9550 9494
Mon-Sat 9-5pm		

COMPACT DISCS

Gosford Document Shredding Service	Contact Name	Graham Smith
Unit 5/236 Manns Rd	Phone	02 4323 3688
Gosford	Fax	02 4323 3688
Mon-Fri 7-5pm	Mobile	018 438 388

CONCRETE

Concrete, Brick & Soil Recyclers	Contact Name	Mick Craft
Lot 60 Donaldson St	Phone	02 4353 2540
North Wyong	Fax	
Mon-Fri 7-5pm, Sat 7-1pm	Mobile	0414 676981

Rexdor P/L	Contact Name	Mick Norman
Kerns Rd	Phone	02 4368 1347
Kincumber	Fax	02 4368 2667
Mon-Fri 7-5pm, Sat 7-1pm	Mobile	

CONSTRUCTION

Concrete, Brick & Soil Recyclers

Lot 60 Donaldson St
North Wyong
Mon-Fri 7-5pm, Sat 7-1pm

Contact Name	Mick Craft
Phone	02 4353 2540
Fax	
Mobile	0414 676981

Lake Macquarie Second Hand Building Materials

Lot 1, Kayunga Close
Swansea

Contact Name	
Phone	02 4972 1492

Rexdor P/L

Kerns Rd
Kincumber
Mon-Fri 7-5pm, Sat 7-1pm

Contact Name	Mick Norman
Phone	02 4368 1347
Fax	02 4368 2667
Mobile	

Waste and Resource Network

35-37 Vallance St Dunheved
St Marys
Mon-Sat 9-5pm

Contact Name	George Wells
Phone	02 9833 4503
Fax	02 9550 9494
Mobile	

COPPER

BJ Howes/ Gosford Scrap Metal

932 Pacific Hwy
Lisarow
Mon-Fri 8-5, Sat 8-4pm

Contact Name	Michael Howes
Phone	02 4328 2366
Fax	02 4328 5630
Mobile	

McCallisters Metal Recyclers

Unit 4/504 Pacific Hwy
North Wyong
Mon-Fri 8:30 - 4pm, Sat 8:30-12

Contact Name	Wayne McCallister
Phone	02 4351 1005
Fax	02 4351 1205
Mobile	0412 427 574

Metalcorp Recyclers

902 Pacific Hwy
Lisarow
Mon-Fri 7:30-5, Sat 8-12

Contact Name	
Phone	02 4328 1022
Fax	
Mobile	

Simsmetal

Cormorant Rd
Koorogang Island

Contact Name

Phone 02 4928 2522
Fax

GARDEN WASTE

Buttonderry Landfill (ANL section)

Hue Hue Road
Wyong

Contact Name

Phone 4350 5410

Open every day (except Christmas) 7-5 and until 6pm during daylight savings

Includes grass clippings, prunings, weeds, branches, tree trunks & untreated timber

Concrete, Brick & Soil Recyclers

Lot 60 Donaldson St
North Wyong
Mon-Fri 7-5, Sat 7-1pm

Contact Name

Mick Craft

Phone 02 4353 2540

Fax

Mobile 0414 676981

LTRAX

Flexible hours, 7 Days (as needed)
Mulch and chip tree waste and pallets

Contact Name

Murray Wicks

Phone 02 4367 0020

Fax 02 4367 0020

Mobile 0417 427782

Rexdor P/L

Kerns Rd
Kincumber
Mon-Fri

Contact Name

Mick Norman

Phone 02 4368 1347

Fax 02 4368 2667

Mobile

GLASS

ASD Paper Recyclers

458 Pacific Hwy
Wyong
Mon-Fri 7:30-3pm

Contact Name

Kevin Price

Phone 02 4351 1566

Fax 02 4351 1525

Mobile

Narara Uniting Church

91 Wyoming Rd
Narara

Contact Name

Brian Green

Phone 02 4362 7566

Fax

Ring up for collection times and locations to drop off material

National Parks and Wildlife Service

Suites 36-38 Albany St
Gosford
Mon-Fri 8:30-5pm

Located in the following regions;

Contact Name Glenn Gifford
Phone 02 4320 4235
Fax 02 4324 7747
Mobile

Munmorah State Recreation Area
Wyrabalong National Park
Bouddi National Park
Brisbane Water National Park

Pilkington (Australia)**Alexandria**

Will accept window glass free of contamination and some tinted/plastic reinforced window

Contact Name
Phone 02 9550 2911 x230

Reverse Garbage

Building 149 Addison St
Marrickville
Mon-Fri 8-5pm, Sat 8-12

Contact Name John Street
Phone 02 9569 3132
Fax
Mobile

SITA - BFI Waste Services

21 Dell Rd
West Gosford
Mon-Fri 8-5pm

Contact Name Bruce Bowman
Phone 02 4324 6133
Fax 02 4324 6201
Mobile

SMS Municipal Services

13 Lucca Rd
Wyong
24hrs 7days drop off (Household quantities)

Contact Name Louise Greenaway
Phone 02 4351 9000
Fax 02 4351 9007
Mobile

GREASE TRAP WASTE

Applied Soil Technology P/L

10 Robert St
Smithfield
Mon-Sat 5-7pm

Contact Name Simon Leake
Phone 02 4774 1579
Fax 02 4774 2201
Mobile 019 366 069

Environmental Biotech P/L

46 Curban St
Balgowlar Heights
Mon-Fri 9-5pm

Contact Name Chris Darby
Phone 02 9907 6815
Fax
Mobile

GUNMETAL

BJ Howes/ Gosford Scrap Metal

932 Pacific Hwy

Lisarow

Mon-Fri 8-5, Sat 8-4pm

Contact Name

Michael Howes

Phone

02 4328 2366

Fax

02 4328 5630

Mobile**McCallisters Metal Recyclers**

Unit 4/504 Pacific Hwy

North Wyong

Mon-Fri 8:30 - 4pm, Sat 8:30-12

Contact Name

Wayne McCallister

Phone

02 4351 1005

Fax

02 4351 1205

Mobile

0412 427 574

Metalcorp Recyclers

902 Pacific Hwy

Lisarow

Mon-Fri 7:30-5, Sat 8-12

Contact Name**Phone**

02 4328 1022

Fax**Mobile****Simsmetal**

Cormorant Rd

Koorogang Island

Contact Name**Phone**

02 4928 2522

Fax

LEAD

BJ Howes/ Gosford Scrap Metal

932 Pacific Hwy

Lisarow

Mon-Fri 8-5, Sat 8-4pm

Contact Name

Michael Howes

Phone

02 4328 2366

Fax

02 4328 5630

Mobile**McCallisters Metal Recyclers**

Unit 4/504 Pacific Hwy

North Wyong

Mon-Fri 8:30 - 4pm, Sat 8:30-12

Contact Name

Wayne McCallister

Phone

02 4351 1005

Fax

02 4351 1205

Mobile

0412 427 574

Metalcorp Recyclers

902 Pacific Hwy

Lisarow

Mon-Fri 7:30-5pm, Sat 8-12

Contact Name**Phone**

02 4328 1022

Fax**Mobile**

Simsmetal
Cormorant Rd
Koorogang Island

Contact Name
Phone 02 4928 2522
Fax

METALS

BJ Howes/ Gosford Scrap Metal
932 Pacific Hwy
Lisarow
Mon-Fri 8-5pm, Sat 8-4pm

Contact Name Michael Howes
Phone 02 4328 2366
Fax 02 4328 5630
Mobile

McCallisters Metal Recyclers
Unit 4/504 Pacific Hwy
North Wyong
Mon-Fri 8:30 - 4pm, Sat 8:30-12

Contact Name Wayne McCallister
Phone 02 4351 1005
Fax 02 4351 1205
Mobile 0412 427 574

Metalcorp Recyclers
902 Pacific Hwy
Lisarow
Mon-Fri 7:30-5pm, Sat 8-12

Contact Name
Phone 02 4328 1022
Fax
Mobile

Simsmetal
Cormorant Rd
Koorogang Island

Contact Name
Phone 02 4928 2522
Fax

OILS



Coast & Valley Oil Dist.
11 Apprentice Dr
Berkeley Vale
Collect and recycle used non-edible oils

Contact Name Peter/Faith Kelly
Phone 02 4388 5911
Fax

Coastal Recycled Cooking Oils P/L
67 Gavenlock Rd
Berkeley Vale
Collect and recycle all edible oils

Contact Name Mary Peck
Phone 02 4352
Fax

Emu Recyclers

226 Currans Rd
 Cooranbong
 Collect cooking fats and oils

Contact Name
Phone 02 4977 1797

ERS Australia P/L

41 Munibug Rd
 Cardiff
 Collect and receive all motor oils and oil filters

Contact Name Graham Williams
Phone 02 4956 6422
Fax

Klekies

6 Daintree Close
 West Gosford

Contact Name Graham Lawson
Phone 02 4324 5036
Fax 02 4324 5175

Used Fats and Oils

9 Park St
 Teralba
 Mon-Sat 6-5pm.
 Collect and receive cooking oils and fats

Contact Name Carlo Damico
Phone 02 4958 7312
Fax 02 4958 7312
Mobile

Vat Man

Unit 4, 167 Blackwall Rd
 Woy Woy
 7 days (as needed)
 Collect cooking oil

Contact Name Steve Golding
Phone
Fax
Mobile 015 258 003

ORGANIC MATERIAL

Applied Soil Technology P/L

10 Robert St
 Smithfield
 Mon-Sat 5-7pm

Contact Name Brett Sutcliffe
Phone 02 4774 1579
Fax 02 4774 2201
Mobile 019 366 069

Complete Earth

40 Echuca Rd
 Empire Bay
 7 days 8am-6pm
 Sells worm farms

Contact Name Philip/Christine
Phone 02 4369 0552
Fax 02 4369 0552
Mobile

Erina Creek Nursery	Contact Name	Ron Holbrow
107 The Entrance Rd	Phone	02 4365 3547
Erina	Fax	
Normal business hours or by appointment	Mobile	0418 450 169
Sells worm farms		

Good Earth Worm Company	Contact Name	Judy/Kevin Eaton
39 Avondale Rd	Phone	02 4977 1286
Cooranbong	Fax	
7 Days as needed	Mobile	
Sells worm farms		

Lakeside Earthworms	Contact Name	
29 Cape Three Points Rd	Phone	02 4382 2348
Avoca	Fax	
Flexible hours, ring for appointment	Mobile	

Peninsula Worms	Contact Name	Judy Cambell
11 Moana St	Phone	02 4341 6105
Woy Woy	Fax	
Sells worm farms		

Primrose Hill Farm	Contact Name	Nicholas Pook
900 Oystershell Rd	Phone	02 4374 1196
Mangrove Creek	Fax	02 4374 1196
7 days, ring for directions	Mobile	
Sells worm farms		

PAPER

4 Seasons Roof & Wall Insulation	Contact Name	Ross Kestle
4/4 Moore St	Phone	02 4323 2333
West Gosford	Fax	02 4323 2322
Newspaper only, ring up for details		

Amcor Australian Paper	Contact Name	Guy Boyden
56 Kallaroo Rd	Phone	02 4942 6422
Redhead	Fax	02 4942 6272
Provide bins at gate for drop off		

ASD Paper Recyclers

458 Pacific Hwy
Wyong
Mon-Fri 7:30-3pm

Contact Name Kevin Price
Phone 02 4351 1566
Fax 02 4351 1525
Mobile

Gosford Document Shredding Service

Unit 5/236 Manns Rd
Gosford
Mon-Fri 7-5pm

Contact Name Graham Smith
Phone 02 4323 3688
Fax 02 4323 3688
Mobile 018 438 388

Gwandalan Lions Club

Lions Den, Winbin Cr
Gwandalan

Contact Name Frances Fletcher
Phone 02 4359 2252

Drop off newspaper at Lions Den between 9am and 12 noon, ring for details

Intershred

1A Queens St
Auburn
Mon-Fri 8-5pm

Contact Name James Fallourn
Phone 1300 366 011
Fax 02 9701 0011
Mobile 0419 224 960

Narara Uniting Church

91 Wyoming Rd
Narara

Contact Name Brian Green
Phone 02 4362 7566

Collection 1st Saturday of the month, ring up for details

National Parks and Wildlife Service

Suites 36-38 Albany St
Gosford
Mon-Fri 8:30-5pm

Contact Name Glenn Gifford
Phone 02 4320 4235
Fax 02 4324 7747
Mobile

Located in the following regions;
Newspaper only

Munmorah State Recreation Area
Wyrabalong National Park
Bouddi National Park
Brisbane Water National Park

Reverse Garbage

Building 149 Addison St
Marrickville
Mon-Fri 8-5pm, Sat 8-12

Contact Name John Street
Phone 02 9569 3132
Fax
Mobile

SITA - BFI Waste Services

21 Dell Rd
West Gosford
Mon-Fri 8-5pm

Contact Name Bruce Bowman
Phone 02 4324 6133
Fax
Mobile

SMS Municipal Services

13 Lucca Rd
Wyong
24hrs 7days drop off.(Household quantities)

Contact Name Louise Greenaway
Phone 02 4351 9000
Fax 02 4351 9007
Mobile

Toukley Lions Club

Lions Clubhouse, Ray Street
Lions Clubhouse, East Toukley
Drop off newspaper at Lions Clubhouse

Contact Name
Phone 02 4397 1511

PLASTIC

ASD Paper Recyclers

458 Pacific Hwy
Wyong
Mon-Fri 7:30-3pm

Contact Name Kevin Price
Phone 02 4351 1566
Fax 02 4351 1525
Mobile

Cromford P/L

120 - 122 Ballendella Rd
Pendle Hill
Mon-Fri 7:30-4pm
Recycle LDPE and HDPE plastic film

Contact Name Kym Jones
Phone 02 9631 6644
Fax

Intershred

1A Queens St
Auburn
Mon-Fri 8-5pm

Contact Name James Fallourn
Phone 1300 366 011
Fax 02 9701 0011
Mobile 0419 224 960

National Parks and Wildlife Service

Suites 36-38 Albany St
Gosford
Mon-Fri 8:30-5pm
Located in the following regions;

Contact Name Glenn Gifford
Phone 02 4320 4235
Fax 02 4324 7747
Mobile
Munmorah State Recreation Area
Wyrabalong National Park

Bouddi National Park

Brisbane Water National Park

SITA - BFI Waste Services

21 Dell Rd
 West Gosford
 Mon-Fri 8-5pm
 Household quantities

Contact Name Bruce Bowman
Phone 02 4324 6133
Fax 02 4324 6201
Mobile

Waste and Resource Network

35-37 Vallance St Dunheved
 St Marys
 Mon-Sat 9-5pm

Contact Name George Wells
Phone 02 9833 4503
Fax 02 9550 9494
Mobile

POLYURETHANE FOAM

Dunlop Underlays

183-187 Newton Rd
 Wetherill Park

Contact Name
Phone 02 9756 3212
Fax 02 9756 1078

RADIATORS

BJ Howes/ Gosford Scrap Metal

932 Pacific Hwy
 Lisarow
 Mon-Fri 8-5pm, Sat 8-4pm

Contact Name Michael Howes
Phone 02 4328 2366
Fax 02 4328 5630
Mobile

McCallisters Metal Recyclers

Unit 4/504 Pacific Hwy
 North Wyong
 Mon-Fri 8:30 - 4pm, Sat 8:30-12

Contact Name Wayne McCallister
Phone 02 4351 1005
Fax 02 4351 1205
Mobile 0412 427 574

Metalcorp Recyclers

902 Pacific Hwy
 Lisarow
 Mon-Fri 7:30-5pm, Sat 8-12

Contact Name
Phone 02 4328 1022
Fax
Mobile

Simsmetal

Cormorant Rd
Koorogang Island

Contact Name**Phone**

02 4928 2522

Fax**STEEL****BJ Howes/ Gosford Scrap Metal**

932 Pacific Hwy
Lisarow
Mon-Fri 8-5pm, Sat 8-4pm

Contact Name

Michael Howes

Phone

02 4328 2366

Fax

02 4328 5630

Mobile**McCallisters Metal Recyclers**

Unit 4/504 Pacific Hwy
North Wyong
Mon-Fri 8:30 - 4pm, Sat 8:30-12

Contact Name

Wayne McCallister

Phone

02 4351 1005

Fax

02 4351 1205

Mobile

0412 427 574

Metalcorp Recyclers

902 Pacific Hwy
Lisarow
Mon-Fri 7:30-5pm, Sat 8-12

Contact Name**Phone**

02 4328 1022

Fax**Mobile****Nonferral P/L**

116 Newcastle Rd
Wallsend
Mon-Fri 7:30-5pm, Sat 8-12

Contact Name**Phone**

02 4928 2522

Fax**Simsmetal**

Cormorant Rd
Koorogang Island

Contact Name**Phone**

02 4928 2522

Fax**SMS Municipal Services**

13 Lucca Rd
Wyong
24hrs 7days drop off (Household quantities)

Contact Name

Louise Greenaway

Phone

02 4351 9000

Fax

02 4351 9007

Mobile

TIMBER

Concrete, Brick & Soil Recyclers

Lot 60 Donaldson St
North Wyong
Mon-Fri 7-5pm, Sat 7-1pm

Contact Name Mick Craft
Phone 02 4353 2540
Fax
Mobile 0414 676981

John Clarkson

25 Washington Ave
Niagara Park

Contact Name John Clarkson
Phone 02 4329 2109

Will collect free of charge usable wood pallets (2ft to standard size) from Gosford to Sydney

Rexdor P/L

Kerns Rd
Kincumber
Mon-Fri 7-5pm, Sat 7-1pm

Contact Name Mick Norman
Phone 02 4368 1347
Fax 02 4368 2667
Mobile

TYRES

Goodyear Auto Service Centre

249 The Entrance Rd
Erina
Mon-Fri and Sat mornings
Will provide waste tyre disposal service

Contact Name
Phone 02 4367 6711
Fax
Mobile

Rrecycle Australia P/L

Lot 47 Lucca Rd
Wyong
Mon-Fri 8-4pm
Will receive truck tyres only

Contact Name Tony Marsh
Phone 02 4353 5665
Fax
Mobile

The Tyre Yard

Lot 10 Comserve Cl
West Gosford
Mon-Fri 8-5pm Sat 9-12

Contact Name Ken
Phone 02 4324 5446
Fax
Mobile

WOOD PALLETS (see Timber)

ZINC

BJ Howes/ Gosford Scrap Metal

932 Pacific Hwy

Lisarow

Mon-Fri 8-5pm, Sat 8-4pm

Contact Name

Michael Howes

Phone

02 4328 2366

Fax

02 4328 5630

Mobile**McCallisters Metal Recyclers**

Unit 4/504 Pacific Hwy

North Wyong

Mon-Fri 8:30 - 4pm, Sat 8:30-12

Contact Name

Wayne McCallister

Phone

02 4351 1005

Fax

02 4351 1205

Mobile

0412 427 574

Metalcorp Recyclers

902 Pacific Hwy

Lisarow

Mon-Fri 7:30-5pm, Sat 8-12

Contact Name**Phone**

02 4328 1022

Fax**Mobile****Simsmetal**

Cormorant Rd

Koorogang Island

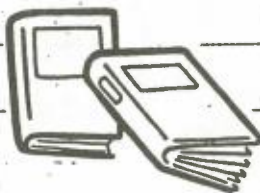
Contact Name**Phone**

02 4928 2522

Fax

*****Second-hand Goods*****

BOOKS

**Book Exchange Woy Woy**

Shop 4/36 Railway St

Woy Woy

Mon-Wed 9-5pm, Thurs-Fri 9-5:30pm, Sat 9-2pm

Contact Name

Valerie Stuart

Phone

02 4344 6206

Fax**Mobile****Gateway Book Exchange**

237 Mann St (opp railway station)

Gosford

Mon-Fri 8:30-5:30pm, Sat 8:30-4pm

Contact Name**Phone**

02 4323 1588

Fax**Mobile****Gosford Book Exchange**

196 Mann St (opp. Hotel)

Gosford

Mon-Fri 5:30-8:30pm, Sat 9-1pm

Contact Name**Phone**

02 4323 1441

Fax**Junkastic Park**

Cullens Rd (Kincumber Landfill)

Kincumber

7:00 - 4:45pm, 7 days

Contact Name

Ross Murray

Phone

02 4368 3900

Fax**The Entrance Book Exchange**

34 The Entrance Rd

The Entrance

Mon-Fri 9-4:30pm, Sat-Sun 10-2pm

Contact Name

Raymond Whitfield

Phone

02 4332 4465

Fax

02 4333 7004

Toukley Plaza Book Exchange

215 Main Rd

Toukley

Mon-Fri 9-5pm, Sat 9-3pm

Contact Name

Janelle

Phone

02 4397 1277

Fax

CLOTHING

**After a fashion recycled clothing**

94 Mann St
Gosford
Mon-Fri 9-5pm, Thurs 9-6, Sat 9-3pm

Contact Name**Phone** 02 4323 6777**Fax****Mobile****Browse About**

393-395 The Entrance Rd
Long Jetty

Contact Name**Phone** 02 4333 5577**Fax****Coathanger The**

Shop 26 Wyoming Shopping
Wyoming

Mon-Fri 9-5:30pm, Sat 9-1pm, Sun 9:30-1pm.

Contact Name

Judy Holmes

Phone

02 4329 5855

Fax**Echo Blue**

Ebbtide Arcade
The Entrance
Mon-Sat 10-4:30pm

Contact Name**Phone**

02 4334 6366

Fax**Fairhaven Centre**

209 Brisbane Water Dr
Pt Clare
Mon-Fri 8 - 4pm

Contact Name**Phone**

02 4323 3566

Fax**Lifeline (warehouse)**

1 Birru Rd
North Gosford
Mon-Fri 8 - 3pm

Contact Name**Phone**

02 4324 4555

Fax**Saint Vincent De Paul**

273 Mann St
Gosford
Mon-Fri 9-4pm, Sat 9 -12

Contact Name**Phone**

02 4323 6080

Fax**Salvation Army**

342 Mann St
Gosford
Mon-Fri 8:30-4pm, Sat 9-12

Contact Name**Phone**

02 4325 3101

Fax

Smith Family

8 Community Rd
Bateau Bay
Mon-Fri 10-4pm

Contact Name

Phone 02 4334 1477
Fax
Mobile

COMPUTER EQUIPMENT**Cash Converters**

160 Mann St
Gosford
Mon-Fri 9-5pm

Contact Name

Peter Wares
Phone 02 4325 0682
Fax
Mobile

Cash Converters

Shop 69 Lake Haven Shopping
Lake Haven
Mon-Fri 9-5:30pm, Sat 9-4pm, Sun 10-4pm

Contact Name

Chris Wares
Phone 02 4393 3850
Fax
Mobile

CONSTRUCTION**Central Coast Secondhand Materials**

98 Rawson Rd
Woy Woy
Mon-Fri 7:30-4pm, Sat 8-12

Contact Name

Phone 02 4344 3068
Fax
Mobile

Gosford Demolition Co

303 Manns Rd
West Gosford
Mon-Fri 9-4pm, Sat 9-12

Contact Name

Deborah Booth
Phone 02 4324 7800
Fax
Mobile

Junkastic Park

Cullens Rd
Kincumber
7:00 - 4:45pm, 7 days

Contact Name

Ross Murray
Phone 02 4368 3900
Fax
Mobile

Resurrection Recyclers

2 Kerta Rd
Kincumber
Mon-Fri 7:30-5pm, Sun 9-3pm

Contact Name

Les Blank
Phone 02 4368 3009
Fax 02 4368 3009
Mobile 015 935 485

CRAFT MATERIALS

Reverse Garbage

Building 149 Addison St
Marrickville
Mon-Fri 8-5pm, Sat 8-12

Contact Name

John Street

Phone

02 9569 3132

Fax**Mobile****Waste and Resource Network**

35-37 Vallance St Dunheved
St Marys
Mon-Sat 9-5pm

Contact Name

George Wells

Phone

02 9833 4503

Fax

02 9550 9494

Mobile

FURNITURE

ABA Furniture

182 Pacific Hwy
Tuggerah
Mon-Fri 8-4pm

Contact Name**Phone**

02 4352 1286

Fax**Absolutely Fabulous Used Furniture**

11 Watt St
Gosford
Mon-Fri 9.30-5.00pm, Sat 9-12

Contact Name**Phone**

02 4325 4545

Fax**Central Coast Loan Office**

310A The Entrance Rd
The Entrance
Mon-Fri 9:30-5pm, Sat 9:30-1pm

Contact Name

Mathew, Tyson or

Phone

02 4332 3499

Fax

02 4332 1966

Mobile**Fairhaven Centre**

209 Brisbane Water Dr
oint Clare
Mon-Fri 8 - 4pm

Contact Name**Phone**

02 4323 3566

Fax**Mobile****Lifeline (warehouse)**

1 Birru Rd
North Gosford,
Mon-Fri 8 - 3pm

Contact Name**Phone**

02 4324 4555

Fax**Mobile**

Long Jetty New and Used Furniture

384 The Entrance Rd

Long Jetty

Mon-Fri 9-5pm

Contact Name

Mark Montgomery

Phone

02 4334 2730

Fax

02 4332 2521

Mobile**Saint Vincent De Paul**

273 Mann St

Gosford

Mon-Fri 9-4pm, Sat 9 -12

Contact Name**Phone**

02 4323 6080

Fax**Mobile****Salvation Army**

342 Mann St

Gosford

Mon-Fri 8:30-4pm, Sat 9-12

Contact Name**Phone**

02 4325 3101

Fax**Mobile****Smith Family**

8 Community Rd

Bateau Bay

Mon-Fri 10-4pm

Contact Name**Phone**

02 4334 1477

Fax**Mobile****The Pre-Loved Furniture Company**

127 Erina St

Gosford

Mon-Fri 9:30-5pm, Sat 9:30-1pm

Contact Name

Mr Parsons

Phone

02 4325 3303

Fax

02 4324 8973

Mobile**GENERAL HOUSEHOLD****Cash Converters**

160 Mann St

Gosford

Mon-Fri 9-5pm

Contact Name

Peter Wares

Phone

02 4325 0682

Fax**Cash Converters**

Shop 69 Lake Haven Shopping

Lake Haven

Mon-Fri 9-5:30pm, Sat 9-4pm, Sun 10-4pm

Contact Name

Chris Wares

Phone

02 4393 3850

Fax

Fairhaven Centre

209 Brisbane Water Dr
Pt Clare
Mon-Fri 8 - 4pm

Contact Name

Phone 02 4323 3566
Fax

Gosford Loan Office

201 Mann St
Gosford
Mon-Fri 9-5, Sat 9-1pm

Contact Name

Paul Taylor
Phone 02 4323 2890
Fax

Junkastic Park

Cullens Rd (Kincumber Landfill)
Kincumber
7:00 - 4:45pm, 7 days

Contact Name

Ross Murray
Phone 02 4368 3900
Fax

Lifeline (warehouse)

1 Birru Rd
North Gosford
Mon-Fri 8 - 3pm

Contact Name

Phone 02 4324 4555
Fax

Saint Vincent De Paul

273 Mann St
Gosford
Mon-Fri 9-4pm, Sat 9 -12

Contact Name

Phone 02 4323 6080
Fax

Salvation Army

342 Mann St
Gosford
Mon-Fri 8:30-4, Sat 9-12

Contact Name

Phone 02 4325 3101
Fax

Smith Family

8 Community Rd
Bateau Bay
Mon-Fri 10-4pm

Contact Name

Phone 02 4334 1477
Fax

MUSIC RECORDS

Junkastic Park

Cullens Rd (Kincumber Landfill)
Kincumber
7:00 - 4:45pm, 7 days

Contact Name

Ross Murray
Phone 02 4368 3900
Fax

OFFICE EQUIPMENT

Cash Converters

160 Mann St
Gosford
Mon-Fri 9-5pm

Contact Name

Peter Wares

Phone

02 4325 0682

Fax**Cash Converters**

Shop 69 Lake Haven Shopping
Lake Haven
Mon-Fri 9-5:30pm, Sat 9-4pm, Sun 10-4pm

Contact Name

Chris Wares

Phone

02 4393 3850

Fax**Mobile****Central Coast Loan Office**

310A The Entrance Rd
The Entrance
Mon-Fri 9:30-5pm, Sat 9:30-1pm

Contact Name

Mathew, Tyson

Phone

02 4332 3499

Fax

02 4332 1966

Gosford Loan Office

201 Mann St
Gosford
Mon-Fri 9-5, Sat 9-1pm

Contact Name

Paul Taylor

Phone

02 4323 2890

Fax

SPORTING GOODS

Cash Converters

160 Mann St
Gosford
Mon-Fri 9-5pm

Contact Name

Peter Wares

Phone

02 4325 0682

Fax**Cash Converters**

Shop 69 Lake Haven Shopping
Lake Haven
Mon-Fri 9-5:30pm, Sat 9-4pm, Sun 10-4pm

Contact Name

Chris Wares

Phone

02 4393 3850

Fax**Gosford Loan Office**

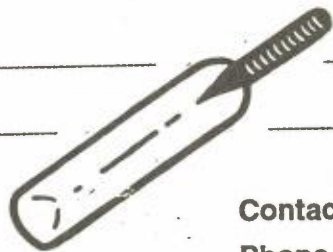
201 Mann St
Gosford
Mon-Fri 9-5pm, Sat 9-1pm

Contact Name

Paul Taylor

Phone

02 4323 2890

Fax

Sports Recall

Shop 3/160 The Entrance Rd
Erina
Mon-Fri 9-5:30pm, Sat 9-4pm, Sun 10-2pm

Contact Name

Mark Newton

Phone

02 4367 8494

Fax

02 4367 8494

WHITEGOODS

Appliance Recyclers

111 Gavenlock Rd
Tuggerah

Contact Name**Phone**

02 4353 3611

Fax**Central Coast Loan Office**

310A The Entrance Rd
The Entrance
Mon-Fri 9:30-5pm, Sat 9:30-1pm

Contact Name

Mathew or Tyson

Phone

02 4332 3499

Fax

02 4332 1966

Mobile**Salvation Army**

342 Mann St
Gosford
Mon-Fri 8:30-4pm, Sat 9-12

Contact Name**Phone**

02 4325 3101

Fax

*****Waste Removal/Collector*****

CHEMICALS

Redichem Transport	Contact Name	Gary Weiss
Woy Woy	Phone	
	Fax	02 4341 1175
5 days a week, flexible hours	Mobile	019 369 568

CONSTRUCTION

Aarons Rubbish Removal	Contact Name	
13 Phegan	Phone	02 4341 9081
Woy Woy	Fax	
	Mobile	0148 452 455

All Clean Excavations	Contact Name	Gary Chick
1 Brush Rd	Phone	02 4365 3489
Wamberal	Fax	
Flexible	Mobile	

B & D Services	Contact Name	
6 Alma Ave	Phone	02 4341 0368
Woy Woy	Fax	
7 Days flexible.	Mobile	

Brown L & D	Contact Name	
Kerta Rd (back of bus depot).	Phone	02 4369 4355
Kincumber	Fax	02 4369 4601
Mon-Sat 24Hrs.	Mobile	

Cleanaway	Contact Name	
105 Gavenlock Rd	Phone	02 4351 2988
Wyong	Fax	02 43512436
Mon-Fri 8-5pm	Mobile	
7 Days (as needed).	Mobile	014 684 537

Coastal Mini Dumpsters

3 Martin Close
Chittaway Point
Mon-Sun 7-3pm (flexible)

Contact Name

Phone 02 4389 8466
Fax
Mobile

Coastal Skips

3 Martin Close
Chittaway Point
Mon-Sun 7-3pm(flexible)

Contact Name

Phone 02 4388 4443
Fax
Mobile

Dumpers Handybin

Lot 66 Louisiana Rd
Warnervale
Mon-Sun 6:30-7pm

Contact Name

Phone 02 4392 2977
Fax
Mobile 018 227655

East Coast Bin Hire

10 Bonniview
Long Jetty
7 Days as needed.

Contact Name

Phone
Fax
Mobile 019 447 977

Economy Waste

3 Bowen Cres
West Gosford
Mon-Sun 7-5pm

Contact Name

Phone Fam Calleija
02 4374 1067
Fax
Mobile 015 783 650

Herfo The Rubbisho P/L

RMB 1678 Wisemans Ferry Rd
Central Mangrove
7 Days flexible hours

Contact Name

Phone 02 4373 1316
Fax

Joe Gallace Rubbish Removals

3 Teloopa Close
Gorokan
Flexible hours

Contact Name

Phone Joe Gallace
02 4392 5159
Fax
Mobile 0418 682771

Tip-Away Services

9 MacMasters Rd
Woy Woy
Mon-Sat Flexible hours

Contact Name

Phone 02 4341 2303
Fax
Mobile 015 454 495

GENERAL HOUSEHOLD WASTE

A & B Little Aussie Digger

11 Hely St
Gosford

Contact Name**Phone** 02 4324 8222**Fax****Mobile** 0411 477 578**Aarons Rubbish Removal**

13 Phegan
Woy Woy

Contact Name**Phone** 02 4341 9081**Fax****Mobile** 0148 452 455**Alkira Gardening**

14 Chico
Copacabana
Mon-Sun 7-3 (flexible)

Contact Name**Phone** 02 4382 3095**Fax****Mobile****All Clean Excavations**

1 Brush Rd
Wamberal
Flexible

Contact Name

Gary Chick

Phone 02 4365 3489**Fax****Mobile****B & D Services**

6 Alma Ave
Woy Woy
7 Days flexible.

Contact Name**Phone** 02 4341 0368**Fax****Mobile****Block Busters**

Blue Haven
7 Days (as needed)

Contact Name

Steven Rutter

Phone 02 4329 1404**Fax****Mobile****Brown L & D**

Kerta Rd (back of bus depot).
Kincumber
Mon-Sat 24Hrs.

Contact Name**Phone** 02 4369 4355**Fax** 02 4369 4601**Mobile**

Clean Up 23 Flathead Rd Ettalong Mon-Sun flexible	Contact Name Phone Fax Mobile	Graham/Rodger 02 4341 2385
Cleanaway 105 Gavenlock Rd Wyong Mon-Fri 8-5pm	Contact Name Phone Fax Mobile	02 4351 2988 02 43512436
Clint Heeseman Wyee 7 Days (as needed).	Contact Name Phone Fax Mobile	Clint Heeseman 02 4357 1484 014 684 537
Coastal Mini Dumpsters 3 Martin Close Chittaway Point Mon-Sun 7-3pm (flexible)	Contact Name Phone Fax Mobile	02 4389 8466
Coastal Skips 3 Martin Close Chittaway Point Mon-Sun 7-3pm (flexible)	Contact Name Phone Fax Mobile	02 4388 4443
Dumpers Handybin Lot 66 Louisiana Rd Warnervale Mon-Sun 6:30-7pm	Contact Name Phone Fax Mobile	02 4392 2977 018 227655
East Coast Bin Hire 10 Bonniview Long Jetty 7 Days as needed.	Contact Name Phone Fax Mobile	019 447 977
Economy Waste 3 Bowen Cres West Gosford Mon-Sun 7-5pm	Contact Name Phone Fax Mobile	Fam Calleija 02 4374 1067 015 783 650

Herfo The Rubbisho P/L	Contact Name	
RMB 1678 Wisemans Ferry Rd	Phone	02 4373 1316
Central Mangrove	Fax	
7 Days flexible	Mobile	

Lessuda Holdings	Contact Name	Leo Fransen
5 Woodside Terrace	Phone	02 4328 3204
Narara	Fax	
Mon-Sat Flexible	Mobile	018 274 062

Rethmans Environmental Services	Contact Name	Alan Daveys
Lot 5 Tathra St	Phone	02 4324 9755
West Gosford	Fax	
Mon-Fri 8-5	Mobile	

SITA - BFI Waste Services	Contact Name	Bruce Bowman
21 Dell Rd	Phone	02 4324 6133
West Gosford	Fax	
Mon-Fri 8-5pm	Mobile	

SMS Municipal Services	Contact Name	Louise Greenaway
13 Lucca Rd	Phone	02 4351 9000
Wyong	Fax	02 4351 9000
24hrs 7days drop off.	Mobile	

Tip-Away Services	Contact Name	
9 MacMasters Rd	Phone	02 4341 2303
Woy Woy	Fax	
Mon-Sat Flexible hours	Mobile	015 454 495

GREASE TRAP WASTE

Anaconda Waste Services	Contact Name	Greg Webb
Empire Bay Drive	Phone	02 4363 2103
Empire Bay	Fax	02 4363 1491
24hrs as needed (emergency# 016 286 384)	Mobile	

Bright's Grease Trap Service	Contact Name	
11 Cowper Rd	Phone	02 4341 0159
Umina	Fax	
7 days 24hrs (as needed)	Mobile	

Cleanaway

105 Gavenlock Rd
Wyong
Mon-Fri 8-5pm

Contact Name

Phone 02 4351 2988
Fax 02 43512436
Mobile

Coastwide Grease Trap Services

3 Carol Cl
Lake Munmorah
7 Days (as needed)

Contact Name

Phone Max/Deborah Mackay
02 43581167
Fax 02 4358 1416
Mobile 015 593 907

J.W Flood

298 Geoffrey Rd
Chittaway Point
7 days, (24hrs if needed)

Contact Name

Phone John Flood
02 4388 6005
Fax
Mobile

GREEN WASTE

A & B Little Aussie Digger

11 Hely St
Gosford

Contact Name

Phone 02 4324 8222
Fax
Mobile 0411 477 578

Aarons Rubbish Removal

13 Phegan
Woy Woy

Contact Name

Phone 02 4341 9081
Fax
Mobile 0148 452 455

Alkira Gardening

14 Chico
Copacabana
Mon-Sun 7-3 (flexible)

Contact Name

Phone 02 4382 3095
Fax
Mobile

All Clean Excavations

1 Brush Rd
Wamberal
Flexible

Contact Name

Phone Gary Chick
02 4365 3489
Fax
Mobile

B & D Services

6 Alma Ave
Woy Woy
7 Days flexible.

Contact Name

Phone 02 4341 0368
Fax
Mobile

Block Busters

Blue Haven
7 Days (as needed)

Contact Name

Steven Rutter
Phone 02 4329 1404
Fax
Mobile

Brown L & D

Kerta Rd (back of bus depot).
Kincumber
Mon-Sat 24Hrs.

Contact Name

Phone 02 4369 4355
Fax 02 4369 4601
Mobile

Clean Up

23 Flathead Rd
Ettalong
Mon-Sun flexible

Contact Name

Graham/Rodger
Phone 02 4341 2385
Fax
Mobile

Cleanaway

105 Gavenlock Rd
Wyong
Mon-Fri 8-5pm

Contact Name

Phone 02 4351 2988
Fax 02 43512436
Mobile

Clint Heeseman

Wyee
7 Days (as needed).

Contact Name

Clint Heeseman
Phone 02 4357 1484
Fax
Mobile 014 684 537

Coastal Mini Dumpsters

3 Martin Close
Chittaway Point
Mon-Sun 7-3(flexible)

Contact Name

Phone 02 4389 8466
Fax
Mobile

Coastal Skips

3 Martin Close
Chittaway Point
Mon-Sun 7-3(flexible)

Contact Name

Phone 02 4388 4443
Fax
Mobile

Dumpers Handybin	Contact Name	
Lot 66 Louisiana Rd	Phone	02 4392 2977
Warnervale	Fax	
Mon-Sun 6:30-7pm	Mobile	018 227655
East Coast Bin Hire	Contact Name	
10 Bonniview	Phone	
Long Jetty	Fax	
7 Days as needed.	Mobile	019 447 977
Economy Waste	Contact Name	Fam Calleija
3 Bowen Cres	Phone	02 4374 1067
West Gosford	Fax	
Mon-Sun 7-5pm	Mobile	015 783 650
Gardeners The	Contact Name	
35 Tall Timbers Rd	Phone	02 4384 4468
Wamberal	Fax	
Flexible	Mobile	
Herfo The Rubbisho P/L	Contact Name	
RMB 1678 Wisemans Ferry Rd	Phone	02 4373 1316
Central Mangrove	Fax	
7 Days flexible	Mobile	
Joe Gallace Rubbish Removals	Contact Name	Joe Gallace
3 Teloopa Close	Phone	02 4392 5159
Gorokan	Fax	
Flexible	Mobile	0418 682771
Looking Good Lawn Service	Contact Name	
287 Main Rd	Phone	02 4396 3962
Toukley	Fax	
Miniskips Kartaway	Contact Name	
24 Riverside Rd	Phone	1300 362 362
Chipping Norton	Fax	
Mon-Sat 7-3pm	Mobile	

Tip-Away Services

9 MacMasters Rd
Woy Woy
Mon-Sat Flexible hours

Contact Name

Phone 02 4341 2303
Fax
Mobile 015 454 495

HOSPITAL WASTE**Daniels Corporation**

15 Stanley Rd
Silverwater
Mon-Fri 7-5pm

Contact Name

Peter Hart
Phone 02 9748 6616
Fax 02 9748 6617
Mobile

OILS**Cleanaway**

105 Gavenlock Rd
Wyong
Mon-Fri 8-5pm

Contact Name

Phone 02 4351 2988
Fax 02 435 12436
Mobile

Coast & Valley Oil Dist.

11 Apprentice Dr
Berkeley Vale

Contact Name

Peter/Faith Kelly
Phone 02 4388 5911
Fax

ERS Australia P/L

41 Munibug Rd
Cardiff

Contact Name

Graham Williams
Phone 02 4956 6422
Fax

Klekies

6 Daintree Close
West Gosford

Contact Name

Graham Lawson
Phone 02 4324 5036
Fax 02 4324 5175

Vat Man

Unit 4, 167 Blackwall Rd
Woy Woy
7 days (as needed)

Contact Name

Steve Golding
Phone
Fax
Mobile 015 258 003

COUNCIL WASTE SERVICES

COUNCIL WASTE
SERVICES

COUNCIL WASTE SERVICES



Gosford City Council

49 Mann St, Gosford

PO Box 21, Gosford NSW 2250

Phone: (02) 4325 8222

Fax: (02) 4323 2477

"Leading to the future whilst serving for today"



Wyong Shire Council

16 Hely St, Wyong

PO Box 20, Wyong NSW 2259

Phone: (02) 4350 5555

Fax: (02) 4351 2098

"building a better tomorrow!"

Gosford City Council

Domestic Waste Services

Ph 02 4325 8841

49 Mann St, Gosford NSW

SITA BFI Waste Systems

Ph 02 4324 6133

21 Dell Rd, West Gosford NSW

Residents are provided with a split 240 litre green recycling bin with a yellow lid, with one third for newspaper and magazines, and two thirds for recyclable containers (glass bottles and jars; aluminium cans and foil; milk and fruit juice cartons; clean steel food cans and spray cans; PET softdrink bottles; HDPE milk bottles opaque only, no coloured bottles). Residents should always remove lids and "wash and squash" plastics, milk and juice cartons, and food and drink cans. The recycling bin is collected on a fortnightly basis. Garbage is collected on a weekly basis in a 240 litre black garbage bin.

Residents are also provided with a maximum of four cleanups a year, and are advised to contact SITA BFI for the relevant collection and storage conditions. Costs for this service are included in the domestic waste collection service. Gosford City Council also co-ordinates the Clean up Australia day in conjunction with a committee of interested residents, held on the 1st Sunday in March every year. Any person interested in joining the committee or wishing to contribute in any way is invited to contact Council's Waste Services Section on 4325 8233 between 9am and 10.30am weekdays at the beginning of each year.

Commercial Waste Services

The domestic weekly garbage and fortnightly recycling service is available to commercial premises as an optional service. The recyclable material collected is identical to the domestic service. Please contact Council's Waste Services Section for further information.

Other Waste Services

As well as servicing the domestic and commercial sectors, Council collects litter bins from public places such as parks and gardens, streets and shopping districts. Aluminium can cages are provided at a number of beaches including; Avoca Beach, Copacabana, MacMaster's Beach, North Avoca, Terrigal, and Wamberal.

Kincumber & Woy Woy landfill

The Kincumber Waste Depot is located on Cullens Road, Kincumber, approximately 6 km east of the Gosford CBD, and has been in operation since 1977. This landfill receives domestic and Council wastes from the localities of Wamberal, Terrigal, Forrester's Beach, Kincumber, Avoca, McMasters Beach, Copacabana, Bensville, East Gosford, Kilcare and Wagstaffe. The landfill is open to the public every day (except Christmas Day) from 7am to 5pm.

The Woy Woy Waste Depot is located on Nagari Road, Woy Woy and is approximately 10 km south of Gosford, across Brisbane Water. The depot receives domestic and Council wastes from the localities of Patonga, Mooney Mooney, Mangrove, Spencer, Kulnura, Somersby, Kariong, West Gosford, Point Clare, Tascott, Koolewong, Woy Woy, Umina, Ettalong, Wyoming, Narara and Lisarow. The landfill is open to the public every day (except Christmas Day) from 7am to 5pm.

Current Landfill Charges for disposal at Woy Woy and Kincumber landfill depots

VECHICLE TYPE	CHARGE
1 Cars, station sedans and passenger vans (loads up to 100kg)	\$5.00
2 All other vehicles	\$54.00/ tonne
3 Special Wastes (by prior arrangement only) Any waste which requires additional handing including but not limited to; <ul style="list-style-type: none"> • Asbestos (flat and corrugated sheets, fibre eg lagging) • Animal wastes, food wastes, pharmaceuticals, drums containing solids, large concrete sections, bulky demolition waste, fine dusty wastes, security waste, shredded tyres and any mixture of general waste with the above. 	\$94.00/ tonne
4 Liquid wastes and unshredded tyres will not be accepted	N/A

RECYCLABLES

- Glass bottles and jars (no plate glass)
 - PET plastic bottles
 - HDPE plastic milk bottles
 - Milk and fruit juice cartons
 - Aluminium cans and foil
 - Tin cans and steel aerosol cans
 - Car bodies and white goods
- FREE OF
CHARGE

CONTACT COUNCILS WASTE SERVICES SECTION FOR
FURTHER INFORMATION - PHONE 4325 8841

Wyong Shire Council

Domestic Waste Services

Ph: 02 4350 5410

16 Hely St, Wyong NSW

SMS Municipal Services

Ph: 02 4351 9000

13 Lucca Road, Wyong NSW

Residents are provided with a split 240 litre recycling and garbage bin coloured green with a yellow lid. The left compartment is for recyclable material (cartons with gable tops, steel and aluminium cans, paper and cardboard, plastics marked 1,2,3 or R, glass bottles and jars). Residents should always remove lids and never put recyclables in plastic bags in the bin. The compartment is for other household waste, in which plastic bags are acceptable. The split bin is collected on a weekly basis.

Most residents are also provided with a 240 litre garden vegetation bin coloured green with an aqua lid, which is collected on a fortnightly basis. This new waste management system has been in existence since February 1998, under contract with SMS Municipal Services. An educational facility aimed at increasing awareness of the new waste collection system for Wyong Shire residents is located at SMS's office. Please contact Louise Greenaway on 4351 9000 to arrange a site visit.

Council provide residents with up to six on-call kerbside collections of bulk household material or bulk garden vegetation cleanups a year, and are advised to contact Council for the relevant collection and storage conditions. These costs are included in the domestic waste collection service.

Commercial Waste Services

Businesses can either utilise the divided waste/recycling bin or opt for an undivided commercial bin or bulk bin. The garden vegetation bin is also available on request.

Other Waste Services

As well as servicing the domestic and commercial sectors, Council collects litter bins from public places such as parks and gardens, streets and beaches. Council also operate a 'Dob in a Dumper' scheme, involving a co-operative approach by the community and Council to stop illegal dumping. There is a reward of up to \$500 for information that leads to the successful fining of the offender. Please phone Council for further details on 4350 5410.

Buttonderry Landfill

The Buttonderry Waste Depot, on Hue Hue Road, Warnervale, is approximately 15km north of Wyong. The waste depot is open to the public every day (except Christmas Day) 7.00am to 5.00pm, and until 6.00pm during daylight savings. This landfill receives domestic, Construction and Demolition, Commercial and Industrial, and Council wastes from all localities within the Wyong Shire.

Current Landfill Charges for disposal at Buttonderry landfill depot

Green Waste in trucks etc	\$46.00/tonne
Green Waste in cars, station sedans etc	\$3.50/tonne
Green Waste in car-type utilities etc	\$17.00/tonne
Commercial and Industrial Waste	\$57.00/tonne
Sludge	\$151/tonne
Tyres - Shredded	\$56.00/tonne
- - Unshredded	\$143.00/tonne
Asbestos	\$95.00/tonne
Animal Wastes, Food wastes, pharmaceuticals etc	\$95.00/tonne
Cars, station sedans and all vehicles designed primarily for passenger carrying and including small narrow panel vans and any vehicle carrying wastes in 1 or 2 containers of garbage can size or smaller	\$3.50 each
Car-type utilities, single axle box trailers, normal width flat floor panel vans and small truck type utilities, Wyong Shire Council reserves the right to weigh all vehicles in this category and to charge at a rate per tonne if the load carried exceeds 0.35 tonnes	\$17.00 each
Clear excavated natural material not contaminated	No charge
Commercial Waste	\$57.00/tonne
Industrial Waste	\$57.00/tonne

RECYCLABLES

- Glass bottles and jars (no plate glass)
 - Plastics marked 1,2,3 or R
 - Paper and cardboard
 - Motor Oils
 - Aluminium cans
- FREE OF
CHARGE

CONTACT COUNCILS HEALTH SERVICES FOR
FURTHER INFORMATION - PHONE 4350 5410

USEFUL CONTACTS AND RESOURCES

USEFUL CONTACTS AND RESOURCES

World Wide Web sites

Australian Sites

<u>Organisation</u>	<u>Web Site</u>
ACT Government Waste Exchange	http://www.act.gov.au/nowaste
Australian Business Chamber	http://www.abol.net
Beverage Industry Environment Council	http://www.biec.com.au
Central Coast Waste Board	http://www.ccwaste.idl.net.au
EcoRecycle – Victoria	http://www.ecorecycle.vic.gov.com.au
EnviroNet Australia	http://www.erin.gov.au/net/environet.html
Environment Australia	http://www.environment.gov.au
Gosford City Council	http://www.gosford.nsw.gov.au/
Hunter Waste Board	http://www.hwpmb.idl.net.au
Illawarra Waste Board	http://www.globalpresence.com.au /
Inner Sydney Waste Board	http://www.wasteboard.nsw.gov.au
Keep Australia Beautiful	http://www.kabnational.org.au
Macarthur Waste Board	http://www.macwaste.org.au
North Sydney Waste Board	http://www.users.bigpond.com/nswb
NSW EPA	http://www.epa.nsw.gov.au
Recycle 2000	http://www.recycle2000.com.au
South Sydney Waste Board	http://www.sswb.nsw.gov.au
WA Department of Environment Protection	http://www.environ.wa.gov.au/iwel
Waste Management Association of Australia	http://www.wmaa.asn.au/
Western Sydney Waste Board	http://www.peg.apc.org/~wswmb
Wyong Shire Council	http://www.wyongsc.nsw.gov.au

International Sites

<u>Organisation</u>	<u>Web Site</u>
Californian Integrated Waste Board	http://www.ciwmbca.gov/
Clean Washington Centre	http://www.cwc.org/
Greater Vancouver Regional District	http://www.gvrd.bc.ca/waste/bro/swcafe.html
Tennessee Materials Exchange	http://www.hwpmb.idl.net.au/index.html
United States EPA	http://www.epa.gov/
Vermont Business Materials Exchange	http://www.enviro-source.com/vt/vtla.cfm
Waste Management Institute of NZ	http://www.mediabass.co.nz/wasteminz/

Organisations

<u>Organisation</u>	<u>Phone Number</u>
Central Coast Waste Board	02 4323 4343
Compost NSW	02 4572 2011
Gosford City Council	02 4325 8841
Hunter Waste Board	02 4940 0400
Illawarra Waste Board	02 4262 2200
Keep Australia Beautiful	02 9331 7355
Macarthur Waste Board	02 4628 4588
North Sydney Waste Board	02 9428 5673
NSW EPA - Solutions to Pollution Line	131 555
Reverse Garbage	02 9569 3132
SCRAP	02 9825 1062
South Sydney Waste Board	02 9316 9199
Waste Management Association of Australia	02 9388 0022
Western Sydney Waste Board	02 9676 6299
Wyong Shire Council	02 4350 5410

WASTEWATCH NEWSLETTERS

WASTEWATCH NEWSLETTERS

<i>Issue One</i>	January 1998
<i>Issue Two</i>	April 1998
<i>Issue Three</i>	August 1998
<i>Issue Four</i>	November 1998

Regional Waste Plan Launched by Minister

THE MINISTER for Environment, Pam Allan, has approved the Waste Board's Regional Waste Plan that outlines the tools it will use as it strives to ensure that nothing is wasted in the region.

(Below) At the launch of the Waste Board's regional waste plan, (from left) Waste Management Officer Martin Hicks, the Minister for the Environment, Pam Allan, General Manager Bruce Watters, the then Chairperson Robin Mosman, James Lawson, Board Director Robert Bell, and Special Projects Officer Darren Bragg.

'The Central Coast Waste Board will ensure that resources are used to the greatest advantage on local and cross-regional solutions to increase the avoidance, reuse and reprocessing of waste materials,' said Mr Bruce Watters, the Board's General Manager.

The Waste Board's primary role is to coordinate waste management policy and practices on the Central Coast and ensure that efficient practices are followed, but we would also like to be seen as the primary source of information on waste management in the region.

The Board will continue to focus on those waste materials that comprise the largest components of the three major solid waste streams, municipal waste, commercial/ industrial waste and construction/ demolition waste.

A manual has been developed to help companies measure and reduce commercial and industrial waste, and a workshop was held on 28 July to explain a new Development Control Plan proposed for the region's building industry. We have also begun an extensive education campaign to reduce household waste and introduced a web site



to provide information on waste management in the region.

The Board is the project manager for a group of projects running across all eight Waste Board regions. These projects address reduction of the green waste component of the waste stream. They cover three categories

- a) education,
- b) market development, and
- c) research.

'With the Minister's approval of our regional plan we have accepted the Waste Challenge and will strive to ensure that "Nothing is Wasted" on the Central Coast,' said Mr Watters.

IN THIS ISSUE

New DCP
Earthworks awards
Robin Mosman retires
EPA grants
Caravan parks
List on our waste directory

WASTE *NOTES

Holland: If you think a 60% waste reduction is an ambitious target for the Central Coast Waste Board, consider the Dutch "Factor 20" challenge. By

the year 2020, the aim is to have the national economy using 95% less energy and resources and generating 95% less wastes, a 20-fold reduction on both counts.

Japan: The city of Chiba is introducing, on a trial basis, waste collection vehicles equipped to melt plastic. By melting the

plastic at the point of collection, rather than transporting it for processing, the trucks can reduce the plastic to 1/15 of its original volume.



Regional Waste Forum

THE REGIONAL WASTE FORUM for the Central Coast met for the first time at the offices of the Waste Board on Thursday, 23 July.

The forum was established to give a broad range of community and industry input into projects arising out of the Regional Waste Plan. They will assist the Board with its review of the plan as part of the community consultation process.

Rita Geary, of the Central Coast Area Health Service, was appointed the forum's Chairperson.

Other members are; Stewart Tyler (Eco-Fix), Jim McCreadie (Lend Lease Property Management), Michael Norman (Rexdor), Claudio Alcaino (Waste Service NSW), Bruce Bowman (SITA-BFI Central Coast), Beth Chapman (Dooralong Valley Progress Association), Geoffrey Ward (Lions Club of Terrigal/Wamberal), John Wiggan (Australian



Central Coast Waste Board Director, Robert Bell, (far side) is representative of the Board on the forum.

Conservation Foundation), Bronwyn Cox (Central Coast Environment Council), Mark Attwooll

(Rumbalara Field Studies Centre) and Robert Bell (Central Coast Waste Board).

Caravan parks set an example

MR LYN KINGSTON, owner of Homeland Caravan Park, North Wyong, was keen to introduce a system to keep garden waste, bottles and cardboard out of landfill. After attending the Board's workshop introducing the "When Less= More" manual, they took on the educational challenge for their residents.

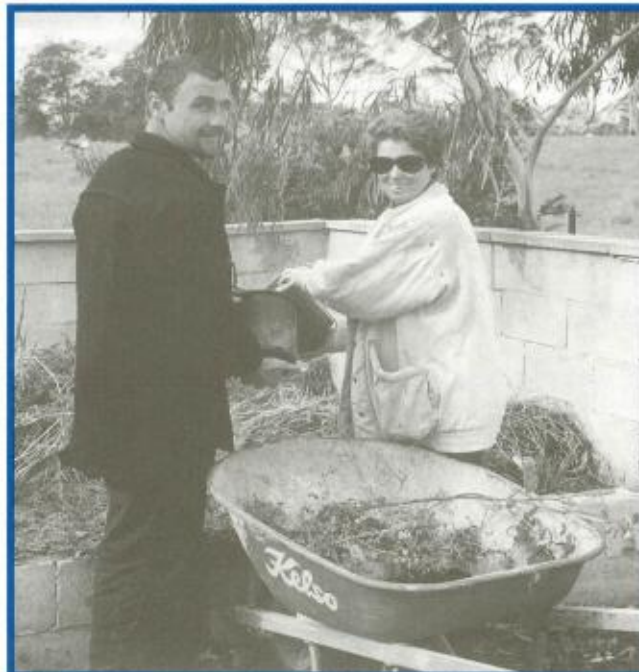
The manual is a practical guide to avoiding waste, designed and tested with the help of more than 400 Central Coast businesses.

Composting for four years, Lyn Kingston now expects to reduce the number of trailer loads going to landfill to gain a saving of about \$1500. They have given informative material on recycling to residents of their park.

As part of her attention to the social aspects of recycling, Park Manager, Lola Warwick, has introduced a three-bin system, consisting of black wheelie bins for rubbish, bins painted green for organic waste and bins painted red for glass.

Lola and her staff run an efficient composting area for some garden waste. It doesn't smell and has increased the sense of community pride among Homeland's residents. As in many parks on the Central Coast, lawns are cut and the clippings left to benefit the trimmed grass.

Considering the amount of work being done at Homeland, it isn't surprising that the park was represented at the Waste Board's workshops for



Working for Mr Lyn Kingston at Homeland Caravan Park, North Wyong, Manager Lola Warwick and part time employee Danial Graham make certain all waste diversion systems are working efficiently, on this occasion, the compost heap.

caravan parks. The example set by Homeland will be a useful reference for the Waste Board's "When Less = More" commercial and industrial waste manual which has been the subject of industry workshops over the past few months.

Meanwhile, another business which had the benefit of the Board's detailed waste analysis

and attended one of its workshops - East's Caravan Park, Umina - plan to recycle their glass, cardboard and aluminium cans. To maintain the great visual appearance of their park, they will use lattice around their three recycling areas, lay concrete slabs, and purchase 240 litre wheelie bins, colour coded for recycling.

Teraglin Lakeshore Leisure Home Village, at Chain Valley Bay, in the region's north, have removed the catchers from their mowers, so that clipped grass is left to 'fertilise' their lawns. They use other green waste in their gardens.

Valhalla Village, at Chain Valley Bay, has also reintroduced a glass collection system and is keen to minimise contamination and labour costs.

Mr Darrel Smith, the park's owner/proprietor who attended a CCWB workshop, says that the system is working well. No doubt it is being helped by promotion in his newsletter.

He also intends to introduce more than two million worms to complement the compost bins that have been operating at the park.

Call the Waste Board for a copy of "When Less = More" or to have someone call to help you.

This project has been assisted by the New South Wales Government through its Waste Planning and Management Fund's Waste Reduction Grants Program.

Board teams with WIRES for wildlife's sake

THAT NECESSITY makes strange bedfellows was obvious at this year's Festival of Treasures, (5-8 June), when the Central Coast Waste Board teamed up with the Wildlife Information and Rescue Education Service, WIRES.

Located in front of the main entrance to Gosford Showground, their exhibit highlighted the damage that can be done to native animals by waste that finds its way into our bush and waterways.

Three posters featured a green tree snake, pelicans and a pademelon in a pristine environment, with other animals that have been killed or



'It was great working with WIRES on this campaign, and we are keen to support other wildlife welfare groups targeting the impact of waste, said the Board's Community Liaison Officer, John Gintowt, seen here at the Festival of Treasures.

(Photo by Kay Blakeman)

injured by waste. They deliver several important messages.

Dumping rubbish in our bushland and waterways

kills, injures and distresses thousands of animals each year. Damage is also caused when dogs and cats are let loose in the

bush and they kill many native animals. Dumping garden waste spreads noxious weeds which take over the habitat of native animals. Even food thrown from the window of a car can have a devastating effect. It brings animals looking for an easy meal close to the road where they are often killed or injured by passing cars.

At some sites there are tonnes of waste that have been illegally dumped. This could have been taken to a recycler or a proper disposal plant.

The posters will be on display at Rumbalara Field Studies Centre, in Gosford and at special events throughout the region.

Earthworks awards

SATURDAY 13 June, would have felt lucky for 11 Earthworks graduates on the Central Coast, when they received their certificates from Robin Mosman, former Chair of the CCWB, and James Lawson one of its Waste Management Officers, at East Gosford Primary School.

Since they have completed the course, they can now claim a rebate for part of the price of purchasing a compost bin or worm farm. They are also eligible for the Waste Board's support for a train-the-trainer course.

Robin Mosman told the group: 'Your decision to do an Earthworks course shows your strong interest in the environment, and how important individuals are to the preservation of the environment. You have joined an exclusive group of people.'



Earthworks graduates got together with representatives of the Central Coast Waste Board, Hunter Waste Board and WEA Hunter

(Picture courtesy WEA Hunter)

News Flash

www.ccwaste.idl.com.au

Take note, the Central Coast Waste Board has opened its web site.

It contains a library of resources, newsletters, compost and worm farming tips, information for students and teachers, Board minutes, the Regional Waste Plan, a local waste directory, waste related internet links and a calendar of events.

Although its site receives on average 180 inquiries per day, the Waste Board will continue to provide alternative sources of information, such as newsletters and brochures, for use by people who could benefit from more knowledge of waste minimisation strategies, but don't have access to the internet.

Lake Macquarie

Waste Management Officer for the CCWB, Martin Hicks, presented a paper at the "Worms n Waste Solutions Conference" held in May, by Lake Macquarie City Council.

Martin spoke about cross-regional greenwaste projects being led by the CCWB. They address:

- * education and awareness of issues and processes
- * development of markets for recycled products
- * research and development into both new and existing processes and products.

Other speakers included Peter Rutherford (Vertical Composting Unit), David Kettle (Composting in New Zealand) and Dr Trevor Gibson (Opportunities in biosolids and agricultural waste).

New waste control for building industry

There was a strong attendance by the building industry and recycling service providers when the Waste Board held a workshop to explain the new Development Control Plan – Controls for Site Waste Management - proposed for the building industry in the region.

More than 20 attended the workshop which was of vital interest to building, demolition and waste industries, builders, architects and developers.

'About 20% of all waste going to landfill comes from the building industry. The Central Coast Waste Board and the region's Councils aim to reverse this practice,' Mr Bruce Wallers, CCWB General Manager has said.

'The workshop was used to explain why the DCP is needed and how it will work. A strong input from industry means that it accounts for local conditions and will help them eliminate unnecessary cost on every job.'

Every time building takes place, a considerable amount of reusable material is thrown away.

This means that builders and developers have missed their opportunity to use valuable materials.

Many older developments don't have sufficient space for garbage bins, garbage truck access and recycling facilities and don't have an ongoing waste management plan. New developments will be required to consider waste management issues at the design, construction and operational stages

This will prevent Council, residents/building occupiers, being left to resolve problems of poor waste management planning at a later stage when it is too late.

Copies of the Draft DCP are available at the CCWB, 1st Floor, 40 Mann Street, Gosford.

Waste Reduction Grants

THE CCWB recently hosted a seminar to help individuals and organisations prepare applications for the 1998-99 grants from the NSW Environmental Protection Authority (EPA).

The funding aims to help the community develop innovative and pro-active approaches to waste reduction consistent with the NSW Waste Minimisation and Management Act.

The EPA grant program has been operating for two years. In the first round (1996-97), over 270 applications were received. A total of 36 community projects were successful, being awarded

a total of \$1,753,142. In the second round (1997-98), 255 applications were received, and 36 projects were successful.

The EPA has identified several priority areas for funding, being commercial and industrial waste, household hazardous waste, avoidance and reuse initiatives, extended producer responsibility, construction and demolition waste and green waste.

Robin Mosman retires



One of Robin Mosman's last public engagements on the Central Coast was a presentation of videos to Holy Cross Primary School Kincumber, for their play "The solutions are out there".

(Photograph courtesy of the Central Coast Express Advocate.)

WHEN ROBIN MOSMAN retired from the position of Chair of the Waste Board, on 22 July 1998, the Board resolved that they would fulfill her duties on rotation. A tireless worker against waste, Robin's retirement means that a huge volume of work will pass to her successors as they make sure **'nothing is wasted'** on the Central Coast.

"Robin was a pleasure to work with and established a Waste Board with a clear sense of direction and well defined goals for the region," said Bruce Watters. Robin took the Board from an organisation that existed on paper to the dynamic, innovative, organisation of today. Robin retired from the Board after moving home from Ourimbah to the Blue Mountains.



A New South Wales Government Initiative

List your business on the Waste Directory

If you receive recyclable materials or provide waste management services, a listing in our Waste Directory will put you in touch with new clients. Contact Wastewatch, 40 Mann Street, PO Box 345, Gosford 2250. Phone: (02) 4323 4343. Fax (02) 4325 3711. E-mail: ccwasteb@acay.com.au

OTHER BOARD PUBLICATIONS

OTHER BOARD PUBLICATIONS

Building on Recycling Technology

Central Coast Waste Board information booklet

Garden & Household Waste

Central Coast Waste Board Annual Report 1996-98

Central Coast Regional Waste Plan - Executive Summary July 1998



On the Central Coast,
the two reprocessors of
concrete, brick and tile are

Rexdor Pty Ltd
Kerns Road Kincumber
Telephone (02) 4368 1347
and
CBS Recyclers
Lot 60 Donaldson Street
Wyong North
Telephone (02) 4353 2540

Crushed and screened products
are available from both companies,
and both accept delivery of
concrete, brick and tiles in sorted
loads at rates much lower than
the local tip.

Call them for prices and conditions.

Local demolition yards sell
reusable building materials and
also accept deliveries.

To find out more about reusing building
and construction materials, call

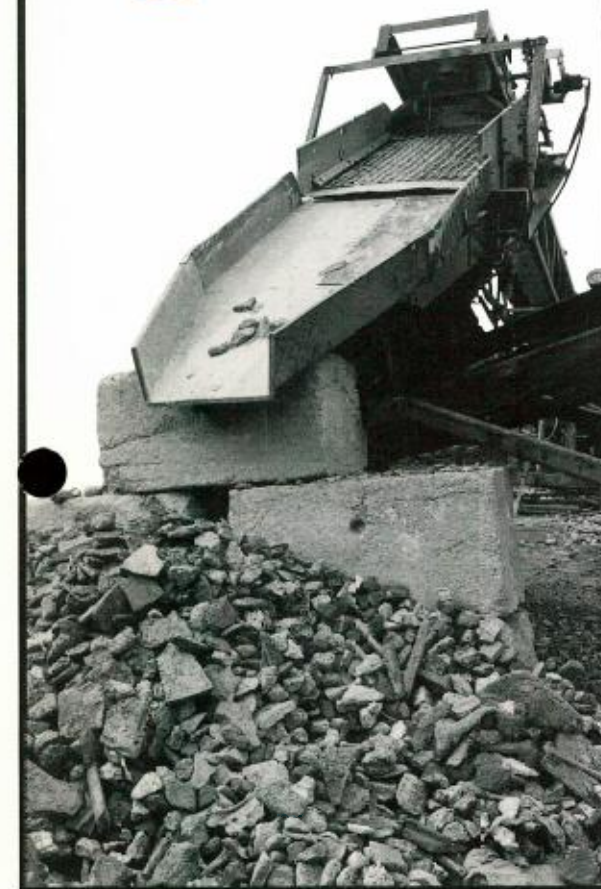
Central Coast Waste Board
40 Mann Street
PO Box 345
Gosford NSW 2250
Telephone (02) 4323 4343
Facsimile (02) 4325 3711
Email ccwasteb@acay.com.au



Visit our web site for detailed information
<http://www.ccwaste.idl.com.au>

Printed on recycled paper

Building on Recycling Technology



ON THE CENTRAL COAST some 70,000 tonnes of building and demolition waste is thrown away every year to land fill. This amount, if piled one metre high and wide, would stretch from Catherine Hill Bay to Patonga...AND BACK AGAIN.

We can help prevent this waste by using second-hand building materials and by recycling building waste rather than throwing it away.



Not only can recycling building waste save you money but it also means that less is taken out of our environment, and that's good news for all of us.

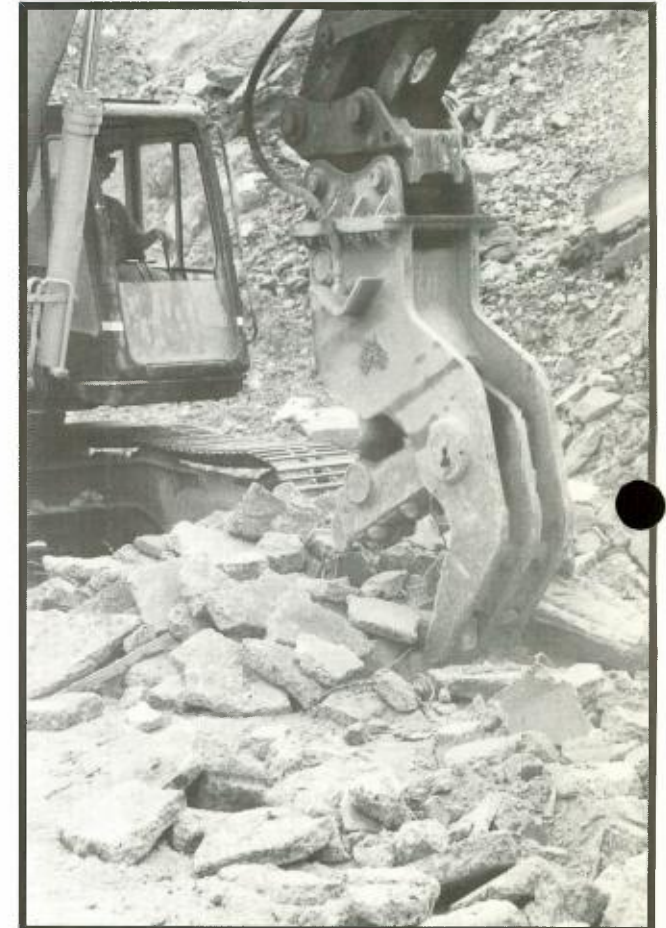
The Central Coast Waste Board has a number of programs to encourage the recycling of used building materials, such as the Site Waste Management Development Control Plan and the establishment of regional facilities.

Crushed concrete can be used for temporary road access for building sites and is useful behind retaining walls and as plumbers' gravel for trenches and as drainage material. It is often used in preference to blue metal around agricultural drainage pipes because it is cheaper.



In civil works, the material is becoming more-and-more accepted as a road base. Whole bricks salvaged from building sites make a useful material for building barbecues and as paving.

Crushed bricks can be used for drainage under house slabs and behind retaining walls, as a base for roads, paving and pathways and crushed tiles can be used as decorative gravel in landscaping.



Reduce Reuse Recycle

Garden & Household Waste



Reduce Reuse Recycle Garden & Household Waste



Green waste makes up 36% of the total waste of NSW. About 837,000 tonnes of green waste is generated by householders and about one quarter of all household waste is garden waste.

This information booklet outlines ways of reducing, reusing and recycling garden and household waste.

Creating a Low Waste Garden:

- ❁ Conserves water
- ❁ Protects the environment
- ❁ Is labour saving
- ❁ Is economical.

Environmental Benefits

- ❁ Many of the native plants and ground covers provide beauty, peace and a home for native fauna.
- ❁ Minimising the use of fertilisers, pesticides and herbicides reduce pollution of the soils and waterways.
- ❁ By reusing and recycling waste, garden and household waste is managed on-site.
- ❁ Garden and household waste can provide ideal ground cover and fertiliser for your plants and vegetables.

A Plan to Reduce Garden Waste

Planning is essential to minimise waste from your garden.

Our step-by-step guide to planning your nature garden involves:

1) Examining the Environment of Your Garden

- ❁ Consider which parts of your garden are in full sun and shade during winter and summer

- ❁ Study the average rainfall in your area. When does it rain the most? Is it heavy rain or light showers?
- ❁ What is the main wind direction? Does the wind get strong? When?
- ❁ Study the seasonal temperature ranges. Do you get frosts? When?
- ❁ Note the main things you can see from your house and garden

2) Recognising Site Features

- ❁ Find out your soil type - sandy light clay, loamy, heavy clay
- ❁ Survey where water drains well and areas it doesn't
- ❁ See if there are any significant slopes
- ❁ Sketch your site showing north, the location of the house and garden, existing features, wind direction and sun patterns

3) Deciding the Nature of Your Garden

- ❁ Make a list of features you want from your garden: herbs, flowers, vegetables, shade, privacy, noise barrier, wind break, beauty, entertainment areas, play areas, a home for fauna, a place to reuse and recycle waste materials

4) Planning Steps in Caring for Your Garden

- ❁ Consider the resources spent in maintaining your current garden - time, money, water, effort
- ❁ Pinpoint the high - maintenance spots - the lawn, exotic plants

5) Determining Your Time Commitment

- ❁ Work out how much time you want to allocate to maintenance
- ❁ Look at how you will make the changes - all at once or progressively

6) Designing Your Nature Garden

- ❁ Now you can start designing your nature garden.

Adapted from the NSW EPA & Friends of the Earth Low Waste Gardening Series.

Steps to Reducing Garden & Household Waste

1) *Improve Your Soil*

Before you begin a garden find out what type of garden soil you have.

In the majority of new housing subdivisions, the topsoil has been removed and you may need to improve it before you commence a planting program.

Adding compost and organic matter helps to break up clay soils, improve the water holding ability of sandy soils and encourage worms to aerate the soil.

If purchasing compost ensure it meets with the Australian Standard AS4454.

2) *Choose Your Plants*

Choose plants that are native or well suited to your area to minimise maintenance and reduce garden waste.

Carefully chosen plants also reduce watering, save time, effort and money.

For example, the White Correa and Coastal Tea Tree are well suited to exposed, windy and salty areas.

3) *Group Your Plants*

By reading the instructions that come with your plants you will notice that some plants like shade, some like protection from winds and others grow well in exposed areas.

For the best results you need to group plants that have similar water and plant care

requirements in the same section of your garden. For example, plants that need regular watering should be planted in one area and Australian natives requiring less watering and more sun in another area of the garden. This makes watering much easier.

4) *Train Your Plants*

You need to train your plants to be water wise. Plants from controlled nursery conditions may need to be weaned off their previous high water dependency.

It is advisable to drench plants thoroughly at well spaced intervals rather than give them regular light sprinklings. This encourages the roots of the plants to grow downwards rather than upwards.

Watering is best carried out during the cooler parts of the day, either early morning or evening.

5) *Minimise Your Lawn Area*

Lawns that are not used can be replaced by alternative ground covers, mulched beds or native trees or shrubs. If you have a lawn, leave mower clippings on the lawn as a mulch.

6) *Use Mulches*

Mulches are any material that can be placed on top of the ground to insulate the soil from the sun's rays. A layer of mulch protects your plants by regulating the soil temperature, safeguarding the root system, suppressing weeds, reducing evaporation loss, improving water retention and air movement through the soil, adding vital soil nutrients and micro organisms as it breaks down, and improving the visual quality of your garden.

When buying mulches check they meet the Australian Standard AS4454.

7) *Conserve the Use of Water*

Appropriate plant grouping enables more efficient use of water. Use a drip irrigation or soaker hose to get the water to where the plants need it.

8) *Recycling Your Household Waste*

Recycling food scraps and other household items can play a vital role in improving the quality of your garden. For example, vegetable scraps can be turned into compost to enrich your soil. Household items such as milk cartons, plastic bottles and egg cartons can be used for growing seedlings or trees.

Food scraps can also be turned into a liquid fertiliser using a household blender.

9) *Limit Use of Deciduous Trees*

Deciduous trees need huge quantities of water, these trees require pruning and raking up of fallen leaves. If leaves fall on roadways they may be washed down drains and pollute waterways.

10) *Restrict Concrete Areas*

Extensive concrete cover reduces soil infiltration and adds an extra load to the stormwater channels. Hard concrete surfaces can be replaced by porous paving, trees or shrubs.

11) *Growth Regulators*

Available at nurseries, growth regulators can slow the growth of lawns and plants.

Mulching

In bushland the soil is covered with leaves and bark, in your garden you can recreate the healthy growing conditions of nature by covering your soil surface with mulches.

Benefits of Mulching

- ❁ Helps maintain an even soil temperature
- ❁ Reduces water loss through evaporation
- ❁ Slows down weed growth
- ❁ Reduces soil compaction
- ❁ Provides a slow-release nutrient source
- ❁ Increase soil microbial activity.

What You Can Use as Mulch

Pine Bark- Various sizes of dark red brown pine are good for around shrubs or pathways - gives a neat tidy appearance.

Woodchips- A wood waste mulch that is honey coloured, needs topping every second year and may be highly toxic to plants unless it is aged or composted. Tree prunings do not feed plants and need to be used over manure mulch.

Eucalyptus Mulch- A finely processed, ochre coloured mulch that is made out of mulched offcuts from the timber industry, with some leaves. It lasts for about two years.

Leaf Mulch- Has a soft informal look which simulates a forest floor and blends well with native gardens. It needs to be renewed about twice a year. Does not rot or feed plants. Can become matted and stop water penetration.

Mushroom Compost- Is a popular mulch but should be treated with caution. High in nutrients, holds moisture, and gives the garden a neat finish. Not appropriate for acid loving plants.

Coconut Fibre- A dark chocolate colour waste product made from coconut husks - holds water well, looks good in the garden and lasts about two years.

Lucerne Hay- Grown and harvested for fodder, it breaks down very quickly, is rich in plant nutrients, and is a good snail and slug repellent. It needs topping up every three to six months.

Forest Mulch- Is a mulch produced from prunings of native and other trees. It is mainly made up of wood waste with some leaves. It is light brown in colour and will last one to two years.

How to Make Mulch

Fresh materials such as grass or leaves can be composted or left to partially breakdown. Mix one part compost, worm castings or rotten manure to ten parts of mulch.

Small prunings and non-invasive plants can be directly used as mulch. Thin prunings can be shredded with a lawn mower. For larger branches use a commercial mulcher.

Mulching Garden Beds

- ❁ Clear around plants by removing weeds and other debris
- ❁ Turn the soil over and

break up hard packed surfaces

- ❁ Drench the soil surface around the plants to encourage plants to develop deep roots
- ❁ Sprinkle a few handfuls of compost to encourage healthy plant growth
- ❁ Apply mulch to a depth of 8 cm and avoid applying mulch too close to the stems and trunks of the plants.

Sheet Mulching

Sheet mulching prepares an area for planting without the need to weed or dig.



- ❁ Cover the area with five sheet thick newspaper and leave for a week or two.
- ❁ To plant, remove cover, plant into compost and mulch heavily.

Composting



Composting is the biological decay process that converts organic wastes into crumbly earth-like substance. This improves the soil structure and produces vigorous disease free plants.

Benefits of Composting

- ✿ Improves the drainage in heavy clay soil
- ✿ Increases the water holding capacity of sandy soils
- ✿ Prevents the surface crusting of silty soils
- ✿ Reduces soil salinity
- ✿ Increases aeration of compacted soil
- ✿ Insulates soil against temperature extremes
- ✿ Increases soil microbial activity.

What Can Be Composted?

Anything that was once plant or animal can be composted, including food scraps, newspapers, grass, prunings, manures and weeds. Animal products need to be composted in a well managed hot heap, and dog and cat manures are best buried in the garden as they can be a source of parasites.

How to Use Compost

- ✿ Use as potting mix for seedlings or around plants
- ✿ Add a 2-5 cm layer around the drip line of trees
- ✿ Apply twice a year to Australian natives
- ✿ Spread thinly once or twice a year as a top dressing for lawns.

Steps to Making Compost

1) Choosing

Choose a site on soil with a slight slope for drainage to position your bin.

A sunny site is best.

2) Collecting

Materials you'll need to collect are:

- Coarse plant material which you can chop using your lawn mower, prunings, old plants, weeds, leaves
- At least three buckets with lids, and a brick for the top of each bucket to keep on the lid
- Collect household food scraps until all buckets are full

- Mown grass catchings
- Pelletized or fresh chook manure
- Rich soil

3) Layering

The coarse material scraps and grass layers should each be between 2-8 cm thick.

The manure and soil layers need only be 1-2 cm thick.

✿ Steps to Layering

- Begin with a layer of coarse material and add water
- Add a layer of scraps and water
- Add a layer of grass and water
- Add a layer of manure and water

v) Add a layer of soil and water

vi) Repeat steps i to v until bin is full.

4) Turning

The first turning is no sooner than two weeks after making the compost heap, then once per week until finished.

Rock the bin and lift it off the heap. Place the bin just beside the heap and fork/shovel the heap back into the bin, mixing it as much as possible.

Never let your finished compost dry out or get too wet.

Your non-smelling compost will be ready in 6-8 weeks.



Supplied by ReIn Plastics

Worm Farming

Worms are wonderful garbage guzzlers and can eat their body weight in food scraps a day. Their castings are a rich soil conditioner.

Setting Up a Worm System

- ❁ You can use small containers with drainage, or purchase a commercially produced worm farm
- ❁ Purchase red or tiger worms through nurseries, by post or look under 'worms' in the telephone directory
- ❁ Start with about 1,000 worms
- ❁ Bed the worms in a mixture of shredded newspaper and finished moist compost
- ❁ Add the worms to the surface of the bedding and cover the bin with a natural material
- ❁ Leave them for a week to get used to their new home
- ❁ Store the bin away from temperature extremes
- ❁ Add food scraps to the top of the bedding
- ❁ Add more scraps when the worms are finished eating these
- ❁ Harvest the worm castings, empty the worms and bedding onto a surface and scrape the castings from the outside as the worms will mound towards the centre
- ❁ Use the ball of worms for a new bedding.

Using Worm Castings

Worm castings can be used as:

- ❁ Plant food - add a 3-6 cm layer around plants and drip line of trees, and cover with mulch.
- ❁ As a potting mix - add 10-20% castings to a poor potting mix.

Trees & Shrubs to Minimise Garden Waste

Careful selection and maintenance of trees and shrubs means minimal effort, cost savings and good looking, nature friendly gardens.

Trees and shrubs provide:

- ✿ Beauty and peace
- ✿ Aroma
- ✿ Shade
- ✿ Shelter
- ✿ Privacy
- ✿ A home for birds and animals
- ✿ Improved soil stability
- ✿ Fruit, herbs and food
- ✿ Barrier against noise and air pollution
- ✿ Less weeds.

Planning Your Trees & Shrubs

- 1) Decide what you want from trees - shade, windbreak or food
- 2) Consider your garden's soil conditions and sun exposure
- 3) Decide how much time you want to spend on maintenance
- 4) Determine how big you want the trees and shrubs
- 5) Choose low maintenance Australian natives to minimise commitment in time and resources
- 6) Group thirsty plants together for ease and efficiency of watering.



Hardy Trees & Shrubs

Bottlebrushes (Callistemons)

Bottlebrushes are easy to care for and grow in almost all soil conditions. Well suited to the climate of eastern Australia, they range from small shrubs to medium trees. The most common flower colour is red, with cream, pink, mauve, purple and green varieties.

Grevilleas

Suited to the majority of Australian climates, Grevilleas are mainly shrubs but also ground covers and trees. They are bird attracting, low maintenance shrubs.

Maintaining Trees & Shrubs

- ✿ Spending more time with trees and shrubs in the early stages means little maintenance at later stages
- ✿ Follow planting instructions that come with the plants
- ✿ Plant densely to avoid weed infestations
- ✿ Lay a healthy mulch layer to suppress weeds and conserve water
- ✿ Prune only when necessary and only after fruiting
- ✿ Water thoroughly and sparingly as most of these plants do well on local rainfall
- ✿ Water in the early morning using drip irrigators and soaker hoses
- ✿ Install a rainwater tank
- ✿ Fertilise by using your own organic compost, liquid fertiliser and worm castings.

Table of Low Maintenance Trees and Shrubs

Name	Size	Location	Moisture	Sun	Soil	Use
Sydney Golden Wattle (<i>Acacia longifolia</i>)	3-4m	Various	Low to none	Full sun to part shade	Survives in most soils	Seed edible Gum also edible
White Correa (<i>Correa alba</i>)	2m	Suits exposed windy, salty areas	None to low once established	Full sun to light shade	Any soil	Leaves make a refreshing tea
Flame Tree (<i>Brachychiton acerifolium</i>)	30m	Various	Low	Full sun	Moist or dry	For large gardens; seeds roasted and ground can be eaten or used instead of coffee
Native Currant (<i>Leptomeria acida</i>)	2m	Coast or ranges	Low	Part shade	Sandy, infertile and clay	Edible fruit
Coastal Tea Tree (<i>Leptospermum laevigatum</i>)	3-8m	Ideal for exposed coastal areas	None to low	Full sun	Any drained soil	Leaves can be used as a tea
Tea Broom-heath (<i>Monotoca elliptica</i>)	3-6m	Grows on coast, forest and ranges	Low	Full sun to part shade	Suit any free-draining soil	Fruit is edible
Broad-leafed Geebung (<i>Persoonia levis</i>)	4m	Coast and ranges	Low	Full sun	Needs good drainage	Fruit ripens on the ground, discard skin and eat sweet flesh
Sandpaper Fig (<i>Ficus coronata</i>)	3-4m	Moist areas	May need watering	Medium	Rich soil	Tasty fig
Magenta Lillypilly (<i>Syzygium paniculatum</i>)	8m	Can be grown in protected coast areas	Moist area of garden	Full sun to filtered shade	Most soils	Slow growing, can be used as feature or screen edible fruit (sweet-sour)

* Table adapted from Friends of the Earth "Low Maintenance Trees and Shrubs".

Deciduous Trees

Useful for providing shade in summer and full sun in winter, deciduous trees demand more water and fertiliser than natives. During autumn the leaves need to be raked, composted or used as mulch.

Two deciduous trees are suited to the NSW coast and ranges. The Flame Tree grows 30 metres tall, is frost tolerant in later years and produces a bright red flower, the White Cedar grows 3 to 8 metres

high, is frost tolerant, suited to dry semi-arid areas, and prefers full sunlight.

Ground Covers & Lawns



Ground Covers & Lawns to Minimise Garden Waste

Lawns need a massive commitment in terms of your time, money and effort. Watering, fertilisers and grass clippings take their toll on the environment.

Creating an environmentally friendly garden involves smaller lawns, using low maintenance ground cover, and finding other uses for lawn areas.

Ways that Lawns Can Create Problems

- ❁ Common lawns, such as Couch and Kikuyu are poorly suited to the coast and ranges of NSW
- ❁ They require regular watering and mowing
- ❁ Lawns are the source of most garden waste
- ❁ More resources and chemicals go into lawns than any other form of agriculture
- ❁ Over-watering and over-fertilising lawns makes them less hardy during dry spells, faster growing and less resistant to disease.

Three "R's" for Lawns

R - reduce lawn areas

R - reuse grass clippings on the lawn

R - recycle clippings as compost or mulch.

Reducing Your Lawn

Benefits of Reducing Lawns

- ❁ It is easier to care for trees and shrubs
- ❁ They give you shady area for relaxation
- ❁ Trees and shrubs offer a habitat for birds
- ❁ A vegetable patch provides food
- ❁ A herb garden can offer herbs, teas and herbal remedies
- ❁ Ground covers that are living mulches return nitrogen to the soil.

Choosing the Best Ground Covers

- ❁ Draw a sketch of the lawn areas at the front, back and sides of your house
- ❁ Classify areas as:
 - Busy - play areas
 - Medium use - entertainment and relaxation areas
 - Low use - infrequently used areas
- ❁ Work out the soil type, drainage, and sunlight exposure for each area
- ❁ Select a ground cover that is appropriate to your needs and site.

Staging Changes to Low Maintenance Cover

- 1) Convert areas that do not need to be lawn
- 2) Transform those areas which have medium or minimal use
- 3) Change busy areas to low maintenance cover.

Steps to Reducing Lawn - Newspaper Mulching

- 1) Clear weeds away from selected areas, turning the soil as you weed and gently watering
- 2) Cover the area with about 10 layers of newspaper
- 3) Cover the newspaper with straw and water the straw to hold it in place.

Reusing

Reusing Clippings

When you mow the lawn, let the clippings fall as a mulch. This reduces your mowing time by 40% or more. As well as saving time, it mulches your lawn, reduces water and fertiliser use.

Steps to Reusing Grass Clippings

- 1) Keep the mower blades sharp to ensure finer clippings that break down quicker
- 2) Set the mower to a tall setting so that only the top third of grass is cut
- 3) Mow your lawn when it's dry to allow clippings to filter to the soil without clumping
- 4) Use push mowers that are low cost, non-polluting and a healthy exercise
- 5) Leave the catcher off when mowing with power mowers
- 6) Mulching mowers are specially designed to re-cut into fine pieces that break down easier
- 7) Recycle tall grass or wet clippings.



Recycling

Grass clippings are excellent for recycling as compost or mulch. Being high in nitrogen and moisture, and quick to decompose, recycling clippings on site will benefit your garden.

Mix grass clippings with coarse materials to keep them from clumping in the compost heap.

Add clippings to a compost heap in thin layers of up to 6 cm. Grass is best composted while still fresh.

Grass clippings as mulch reduce water loss and provide nutrients to your garden. It is unwise to use clippings from a lawn that has weeds or when weed killer has been used.

Do not place too close to plant stems.

Steps to Recycling Grass Clippings

- 1) Mix with leaf litter, twigs or bark to avoid clumping
- 2) Let the mixture partly break down before using it as a mulch
- 3) Add nitrogen such as well-rotted manure or compost in a one-to-ten ratio to minimise temporary nitrogen loss from the soil
- 4) Mulch soil early spring before it has time to warm up
- 5) Water area before applying mulch
- 6) Apply the mulch around trees and shrubs to a depth of 75 to 100 mm

Caring for Your Lawn

- ❁ Conserve water as most established lawns survive without extra watering and turn green with the autumn rain.
- ❁ Water just before they begin to wilt
- ❁ Reuse grass clippings on the lawn to help retain moisture
- ❁ Spike compacted soil for more soaking and less run-off
- ❁ Fertilise lightly and frequently to reduce water needs
- ❁ Water early in the morning
- ❁ Water infrequently to encourage deeper, extensive root systems which enable lawns to resist disease and stress
- ❁ Install a rainwater tank or use grey water from your washing machine
- ❁ Fertilise in autumn to encourage root growth and lawn thickening
- ❁ Use growth regulators to slow the growth of lawns.

Table of Low Maintenance Ground Covers

Name	Description	Soil	Watering	Sun	Mowing	Use
Native grass (<i>Dryarna flavius</i>)	Native turf	Any	Drought tolerant	Full or part shade	None or very little	Can filter grey water
Nathers Green (<i>Sporobolus virginicus</i>)	Fine-leaf native grass	Any, prefers sandy	Drought tolerant	Full sun or semi shade	Few times a year	High traffic; can filter grey water
Lippia, Fog Fruit (<i>Phyla nodiflora</i>)	Creeper, spreads up to 2m wide; 2cm lilac flower most of the year	Tolerates waterlogging and salt spray	Some during warmer months	Full sun or semi shade	None	High traffic
Kidney Weed (<i>Dichondra repens</i>)	Rapid growing, 1-2cm high, 1m wide; small green-yellow flowers in spring	Well-drained	None to low	Sun or shade	Few times a year	Mild traffic; recovers well after wear; good for edges / strips
Swamp Mazus (<i>Mazus pumilio</i>)	Forms a dense mat 1m wide; small white-violet flowers in spring	Tolerates moist boggy soils	Survives on rainfall if in correct position	Sun or partial shade	None to few	Tolerates foot traffic in shaded moist areas
Lawn Chamomile (<i>Chamaemelum nobile</i> Treneague)	Non-flowering 5-10cm high	Most	Very little once established	Moderate	As needed	Good companion plant; use as tea, shampoo, fertiliser
Pennyroyal (<i>Mentha pulegium</i> var 'Decumbens')	2-3cm high spreads 70cm/yr; red-purple flowers in summer, aromatic when stepped on	All, but prefers moist areas	Only in extreme heat, not drought tolerant	Full sun to part shade	None	Suits high traffic; excellent insect repellent
Corsican Mint (<i>Mentha requenii</i>)	3-6cm high, cushion of greenery, hardy tiny blossoms early summer; fragrant when stepped on	Well-drained, mildly-enriched and moist soil	Low water needs	Full sun or light shade	None	Can stand some traffic
Wild Thyme (<i>Thymus serpyllum</i>)	3-12cm high carpet, aromatic leaves rosy to white	Suited to dry, well drained soil as well as damp clay	None to low	Full sun	Mowing not usually needed	Withstands mild traffic; can be used as a herb in cooking; eases headaches; also strong antiseptic
Creeping Boobialla (<i>Myoporum parvifolium</i>)	4cm high, 1-2m wide, small white flowers or pink flowers in spring-summer	Any soil; high drainage	Drought tolerant	Full sun	None	Good for weed suppression

* Table adapted from Friends of the Earth "Low Maintenance Ground Covers".



ILLAWARRA

Dapto Plaza
14/51 Baan Baan St
DAPTO NSW 2530
PO Box 460
DAPTO NSW 2530
Phone 02 4262 2200
Fax 02 4262 2533
Mobile 04 1485 6410
E-mail ilawaste@bigpond.com
http://www.globalpresence.com.au/waste_exchange

WESTERN SYDNEY

203/30 Campbell St
BLACKTOWN NSW 2148
PO Box 1101
BLACKTOWN NSW 2148
Phone 02 9676 6299
Fax 02 9676 6363
Mobile 04 1723 1251
E-mail wswmb@region.net.au
<http://www.peg.apc.org/~wswmb/>

CENTRAL COAST

Suite 103, 40 Mann St
GOSFORD NSW 2250
PO Box 345
GOSFORD NSW 2250
Phone 02 4323 4343
Fax 02 4325 3711
Mobile 04 1901 5350
E-mail ccwasteb@acay.com.au
<http://www.ccwaste.idl.com.au>

NORTHERN SYDNEY

Suite 1, 47a Penrose St
LANE COVE NSW 2066
Phone 02 9428 5673
Fax 02 9428 5674
E-mail nswb@bigpond.com
<http://www.users.bigpond.com/nswb>

SOUTHERN SYDNEY

Unit 4B, The Lakes Business Park
2 Lord St
BOTANY NSW 2019
Locked Bag 30071
BOTANY NSW 2019
Phone 02 9316 9199
Fax 02 9316 9586
Mobile 04 1427 6464
E-mail wastesth@mpx.com.au
<http://www.sswb.nsw.gov.au>

HUNTER

99 Broadmeadow Rd
BROADMEADOW NSW 2292
PO Box 307
WARATAH NSW 2298
Phone 02 4940 0400
Fax 02 4940 0399
E-mail hwpmb@idl.com.au
<http://www.hwpmb.idl.net.au>

INNER SYDNEY

Level 11, Town Hall House
456 Kent St
SYDNEY NSW 2000
Phone 02 9261 2777
Fax 02 9261 2577
Mobile 04 1135 5919
E-mail iswb@wasteboard.nsw.gov.au

MACARTHUR

3/1 Bolger St
CAMPBELLTOWN NSW 2560
PO Box 1441
CAMPBELLTOWN NSW 2560
Phone 02 4628 4588
Fax 02 4628 9925
Mobile 04 1230 3719
E-mail mwb@macwaste.org.au
<http://www.macwaste.org.au>

Produced by the Central Coast Waste Board on behalf of the
New South Wales Waste Boards.



100% RECYCLED PAPER

INDEX

(Section Codes	Black - B	Dark Blue - DB	Green - G
	Light Blue - LB	Purple - P	Red - R
	White - W	Yellow - Y	

INDEX

(Section Codes	Black - B	Dark Blue - DB	Green - G
	Light Blue - LB	Purple - P	Red - R
	White - W	Yellow - Y	

SECTION/PAGE

ALUMINIUM	LB 1
ANIMAL BONES & FATS	LB 2
BATTERIES	LB 3
BOOKS	LB 19
BRASS	LB 3
BRICKS	LB 4
BUILDING (see Bricks, Construction and Timber)	LB 4
BUTTONDERRY LANDFILL	Y 5,6
CARDBOARD	LB 4
CENTRAL COAST WASTE BOARD	G
	R 6
CHEMICALS	LB 27
CLOTHING	LB 20
COMPACT DISCS	LB 5
COMPOST NSW	R 6
COMPUTER EQUIPMENT	LB 21
CONCRETE	LB 5
CONSTRUCTION	LB 6,21,27
COPPER	LB 6
CRAFT MATERIALS	LB 22
EAST'S OCEAN BEACH CARAVAN PARK	W (part 3)
ERINA FAIR SHOPPING COMPLEX	W (part 3)
ENVIRONMENT RESOURCE INFORMATION	LB 1
FURNITURE	LB 22
GARDEN WASTE	LB 7
GENERAL HOUSEHOLD WASTE	LB 23,29
GLASS	LB 7
GOSFORD CITY COUNCIL	Y 2
GREASE TRAP WASTE	LB 8,31

	SECTION/PAGE
GREEN WASTE	LB 32
GUNMETAL	LB 9
HOSPITAL WASTE	LB 35
HUNTER WASTE BOARD	R 6
ILLAWARRA WASTE BOARD	R 6
KEEP AUSTRALIA BEAUTIFUL	R 6
KINCUMBER LANDFILL	Y 2,4
LEAD	LB 9
MACARTHUR WASTE BOARD	R 6
METALS	LB 10
MUSIC RECORDS	LB 24
NORTH SYDNEY WASTE BOARD	R 6
NSW EPA	R 6
OFFICE EQUIPMENT	LB 25
OILS	LB 10,35
ORGANIC MATERIAL (includes worms)	LB 11
PAPER	LB 12
PLASTIC	LB 14
POLYURETHANE FOAM	LB 15
RADIATORS	LB 15
REVERSE GARBAGE	R 6
SCRAP	R 6
SOUTH SYDNEY WASTE BOARD	R 6
SPORTING GOODS	LB 25
STEEL	LB 16
TIMBER	LB 17
TYRES	LB 17
WASTE MANAGEMENT ASSOCIATION OF AUSTRALIA	R 6
WESTERN SYDNEY WASTE BOARD	R 6
WHITEGOODS	LB 26
WOY WOY LANDFILL	Y 3,4
WYONG SHIRE COUNCIL	Y 5
ZINC	LB 17