

Lord Howe Island

Regional Environmental Study

Bibliography

333.7809
9481
LOR

Lord Howe Island Board

Lord Howe Island

Regional Environmental Study
Bibliography

Prepared by Anne Plummer
N.S.W. Crown Lands Office
June 1985

Office of Environment & Heritage
LIBRARY - HURSTVILLE

Shelf no:
ID no: 149871

NATIONAL PARKS AND WILDLIFE SERVICE	
Site	H.O. Library
Access No.	1221 9146 85/12
Source	D. Sheppard
Order No.	Cost don
Classification	Date Rec.
333-78099451/402/A	12.12.85

~~ARCHIVES~~

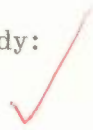
333.7809
9481
LOR
~~ARCHIVES~~

PLUMMER, Anne
Lord Howe Island
regional
environmental study:

89/8

~~1279~~

donation





PREFACE

The exceptional natural beauty of Lord Howe Island, characterised by a diversity of distinct landscapes and a wide variety of rare flora and fauna, has long been appreciated by the New South Wales Government.

Its unique qualities received worldwide recognition when it was included in the World Heritage list during December 1982.

As part of the concern for caring for a World Heritage Site a regional environmental study has been carried out as a first step towards updating the present planning scheme. The study identifies the special features of the Island and suggests means to maintain the islanders' lifestyle in harmony with the natural environment.

A two volume set which contains the text of the study and the mapping information respectively, is supported by a number of other documents. As well as this bibliography there are specific studies on bushfire hazard, heritage, land resources, marine environment, social and economic environment, tourism, vegetation and visual assessment.

Over 450 reference including 19th Century Government reports and recent specialised scientific papers have been compiled from various sources and categorised under the following broad subject headings:

- . Natural Environment
- . History and Heritage
- . Social and Economic Issues
- . Land use and Management

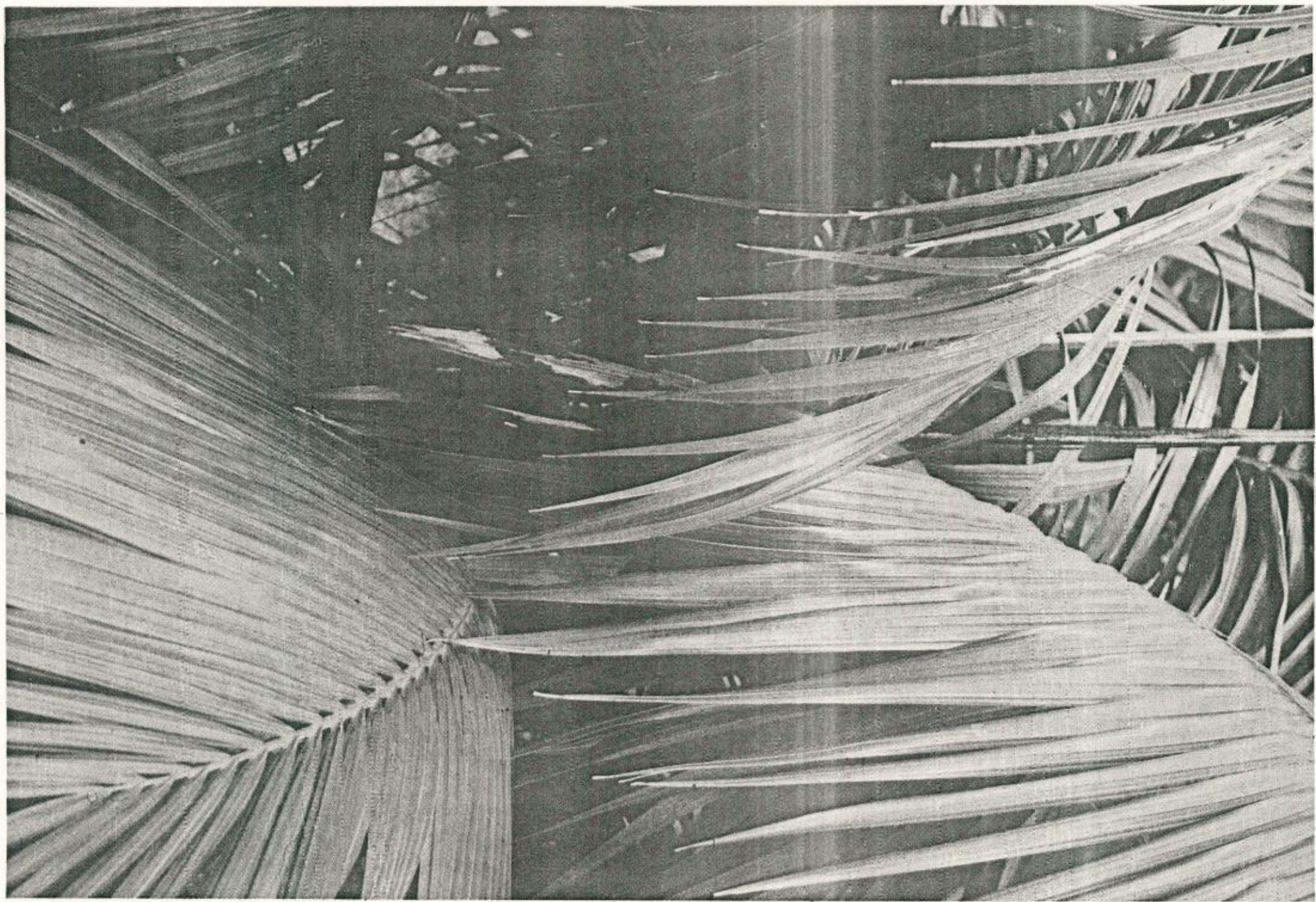
The bibliography has been compiled by the N.S.W. Crown Lands Office with the assistance from many other Government Agencies.

CONTENTS

PAGE

(1)	Natural Environment	1
	(a) General	1
	(b) Vegetation	3
	(c) Wildlife	12
	(i) birds		17
	(ii) insects		26
	(iii) marine life		34
	(iv) reptiles		36
	(d) Geology and Soils		37
	(e) Topography and Hydrology		40
	(f) Climate	41
(2)	History and Heritage	43
(3)	Social and Economic Issues	46
(4)	Land Use and Land Management	52





LORD HOWE ISLAND BIBLIOGRAPHY



1. NATURAL ENVIRONMENT

(a) General

Anon. (1978). Our Seven Natural Wonders - Lord Howe Island.
Weekend Australian, 1. VII. 1978

Australian Broadcasting Commission, (1974).
A singular island - Lord Howe Island. Wild Australia
series, 29min.film (16mm).

Baglin, D. and Mullins, B. (1970). Islands of Australia.
Horwitz, Sydney. pp. 118-123.

Brazier, J.W. (1869). 'Lord Howe Island'.
Sydney Morning Herald. 16th June, p.8.

Clarson, W. (1882). 'The Island of Lord Howe - Madeira of the
Pacific'. Illustrated Sydney News, July-August.

Edgecombe, J. and Bennett, I. (1978). Discovering Lord Howe Island.
Pacific Maps, Sydney.

Finch, A. and Finch, V. (1967). Lord Howe Island.
Rigby, Adelaide.

George, D. 1984. Lord Howe. Cruising Helmsman, August, pp.29-34.

Gillett, K. and McNeill, F. (1959). The Great Barrier Reef and
adjacent islands. Text on Lord Howe Island by E. Pope.
Coral Press, Sydney. pp.141-159.

Hill, E.S. (1869). 'Lord Howe Island'.
Sydney Morning Herald. 12th June, pp.7-8.

Marsh, L. and Pope, E. (1967). 'Norfolk and Lord Howe Islands'.
Aust.Nat.Hist. December, p.391.

Moult, A. (1982). 'Sydney's biggest island'. Sydney City Monthly
August, 1982, pp.90-93.

Mullins, J. (1976). 'Lord Howe Island'. Woman's Day 22nd November,
1976, p.22.

Musgrave, A. (1925). 'The Madeira of the Pacific.' R. Empire
Soc.United Empire J. New Series 16,633-634.

Park, R. (1982). Norfolk Island and Lord Howe Island

Pope, E. (1959). Lord Howe Island. In Gillett, K. and McNeill, F.
The Great Barrier Reef and adjacent islands. Coral
Press, Sydney, pp.141-159.

Recher, H.F. and Ponder, W.F. (1981). Lord Howe Island.
A summary of current and projected scientific and
environmental activities. Australian Museum, Sydney.

Ritchie, A. (1978). 'An island sanctuary (Lord Howe Island)'.
Hemisphere 22,2-7.

Serventy, V. (1978). 'Our seven natural wonders'. The Australian
1st July, p.12.

Summerhayes, S. (1979). '300 Masked Boobies, 100,000 Sooty Terns
and 250 human residents. A profile of Lord Howe
Island'. GEO, Australia's Geographical Magazine 2(1),
95-105.

Trower, R. (1982). Lord Howe Island, South Pacific.

(b) Vegetation

Adam, P. 1981. Saltmarsh plants of New South Wales.
Wetlands 1(1), 11-19.

Anderson, A.J. (1944). Kentia palms.
A report to the Lord Howe Island Board of Control.
Department of Lands, Sydney.

Anon. (1892). 'Notes and exhibits'.
Proc.Linn.Soc.N.S.W. 7,277.

Baker, J.G. (1872). 'Ferns of Lord Howe Island'. Gard.Chron.Ag.Gaz.
31,252-253.

Baker, J.G. (1873). 'New ferns from Lord Howe Island'. J. Bot.
11,16-17.

Baker, J.G. (1874). 'Tree-fern from Lord Howe Island'. J. Bot.
12,279-281.

Balgooy. M.M.J.van (1971). 'Plant - geography of the Pacific as
based on a census of phanerogam genera'. Blumea. Suppl.
V1,1-222.

Bennet, G.D. (1872a). (No title - extracts from letter to the
editor.) Gard.Chron.Ag.Gaz. 31,113.

Bennet, G.D. (1872b). 'Iris Robinsonia'. Gard.Chron.Ag.Gaz. 31,393.

- Bentham, G. (1863-1878). Flora Australiensis. spp:20 in vols. 1-5,1863-70; 16 in vol.6,1873; 76 in vol.7,1878. Total 112.
- Bevan, W. (1912). Report of the Royal Commission of Inquiry into the condition and welfare of the residents of Lord Howe Island, and the control of the *Kentia* palm seed trade. Votes and Proceedings of the Legislative Assembly of New South Wales, 1912.
- Boorman, J.L. (1921). Lord Howe Island plants. Unpub.Ms.,Library, Royal Botanic Gardens, Sydney.
- Brotherus, V.F. (1915). 'The mosses of Lord Howe Island'. Proc.Linn.Soc.N.S.W. 40,363-385.
- Brownlie, G. (1965). 'The geographical affinities of the South Pacific Island fern floras'. Pacif.Sci. 19,219-223.
- Cheel, E. (1912-14). 'Australian and South Sea Islands' Stictaceae. Aust.Ass.Adv.Sci. 13,254-70; 14,311-320.
- Clark, S.S. (1974). 'Vegetation and environment'. Austral.Nat. History. 18(2), 56-59.
- Clark, S.S. (1974). Appendix D. Pattern Analysis of the vegetation. In Recher, H.F. and Clark, S.S., Environmental survey of Lord Howe Island. A report to the Lord Howe Island Board. N.S.W. Govt.Printer, Sydney, pp.37-46.
- Clarke, W.B. (1870). Presidential address. J. & Proc.Roy.Soc.New South Wales 4,37.
- Corrie, A.T. (1878). 'A visit to Lord Howe Island'. Proc.Roy.Geog. Soc. 22,136.

- Daveau, J. (1896). 'Dichogamie proterandre chez le Kentia (Howea) Belmoreans'. Journal Botanique.
- Denham, H.M. (1853). Remarks upon Lord Howe Island. Votes and Proceedings of Legislative Council of New South Wales, 1853, 2, 726-727.
- Dowden, H. (1980). Forestry Commission of N.S.W., Sydney. Lord Howe Island palms.
- Duff, J. (1882). Report on the vegetation of Lord Howe Island. In Wilson, J.B. Lord Howe Island (Report on present state and future prospects). Votes and Proceedings of the Legislative Assembly of New South Wales, 1882, 4, 1463.
- Etheridge, R. (1889). 'Note on the bibliography of Lord Howe Island'. Proc.Linn.Soc.N.S.W. (2nd Ser.) 4, 627-631.
- Foulis, J. (1853). Statement of circumstances in reference to Lord Howe's Island, situated off the coast of New South Wales, between the heads of Port Jackson and Norfolk Island. Votes and Proceedings of the Legislative Council of New South Wales, 1853, 2, 719-721.
- Good, R. (1957). 'Some problems of southern floras with special reference to Australasia'. Aust.J.Sci. 20, 41-44.
- Green, P.S. (1970). 'Notes relating to the floras of Norfolk and Lord Howe Islands'. J. Arnold Arbor. 51, 204-220.
- Hampe, E. (1869). 'Species muscorum novas ex Herbario Melbourneano Australiae'. Linnaea. 36, 513-526.

Hampe, E. (1874). 'Species muscorum novae ex Herbario Melbourneano Australiae'. Linnaea. 38,661-672.

Hemsley, W.B. (1896). 'The flora of Lord Howe Island'. Ann.Bot. (London) 10,223-284.

Hill, E.S. (1870). Lord Howe Island, 1869. Official visit by the Water Police Magistrate and the Director of the Botanic Gardens, Sydney, together with a description of the island by Edward S. Hill. Votes and Proceedings of the Legislative Assembly, 1870, 1,635-654.

Kasasian, L. (1971). Weed control in the tropics. Leonard Hill, London.

Langwell, H. (1911). Report of the Royal Commission of Inquiry into the control of the Kentia palm seed question of Lord Howe Island. Votes and Proceedings of the Legislative Assembly of New South Wales, 1911.

"Linnaeus" (1882). 'The Island of Lord Howe "The Madeira of the Pacific"'. Illustrated Sydney News.

Lucas, A.H.S. (1935). 'The marine algae of Lord Howe Island'. Proc. Linn.Soc.N.S.W. 60,194-232.

Macdonald, J.D. (1853). Remarks on the natural history and capabilities of Lord Howe Island. N.S.W. Parliamentary Papers, 2,127 and in 'Hookers' Kew J.Bot. 6,353,1854.

Macdonald, J.D. (1872). 'Note sur la topographie et l'histoire naturelle de l'île de Lord Howe'. Arch.de Med.Navale 17,241.

- MacGillivray, J. (1852-55). Private journal kept by John MacGillivray during the voyage of H.M.S. 'Herald'. Naturalist Ms. No.23. Admiralty Library, London.
- MacGillivray, J. (1854). Letter from John MacGillivray Esq. Naturalist of H.M. Surveying-Ship 'Herald', commanded by Capt. Denham, dated Sydney, March 3rd, 1854. 'Hookers' Kew J.Bot. 6,353-363.
- Maiden, J.H. (1898). 'Observations on the vegetation of Lord Howe Island'. Proc.Linn.Soc.N.S.W. 23,112-158.
- Maiden, J.H. (1899). 'Some further observations on the vegetation of Lord Howe Island'. Proc.Linn.Soc.N.S.W. 24,381-384.
- Maiden, J.H. (1901). 'On one of the so-called honeysuckles of Lord Howe Island'. Proc.Linn.Soc.N.S.W. 26,156-158.
- Maiden, J.H. (1902). 'On a new Cryptocarya from Lord Howe Island, together with notes on other plants from that island'. Proc.Linn.Soc.N.S.W. 27,347-351.
- Maiden, J.H. (1914). 'Further notes on the botany of Lord Howe Island'. Proc.Linn.Soc.N.S.W. 39,377-384.
- Maiden, J.H. (1920). 'A few notes on the botany of Lord Howe Island'. Proc.Linn.Soc.N.S.W. 45,564-566.
- Merill, E.D. (1947). 'A botanical bibliography of the Islands of the Pacific'. Contrib.U.S.Nat.Herb. 30,1-404.

- Mez, C. (1902). 'Myrsinaceae'. Das Pflanzenreich IV, 236. pp.207-271. Includes descriptions of two Lord Howe Island species of Rapanea.
- Moore, C. (1869a). 'Lord Howe's Island'. Gard.Chron. 28,968-969.
- Moore, C. (1869b). 'Vegetation of Lord Howe's Island'. J.Bot. 1,299-304.
- Moore, C. (1870a). Sketch of the vegetation of Lord Howe Island. Official visit by the Water Police Magistrate and the Director of the Botanic Gardens, Sydney, together with a description of the island by Edward S. Hill. Votes and Proceedings of the Legislative Assembly of New South Wales, 1870, 1,640-643.
- Moore, C. (1870b). Sketch of the botany of Lord Howe Island. In Anon. Official Visit by the Water Police Magistrate and the Director of the Botanic Gardens, Sydney, together with a description of the island by Edward S. Hill. pp.17-27. Government Printer, Sydney.
- Moore, C. (1870c). 'Sketch of the botany of Lord Howe Island'. Trans.Bot.Soc.Edinburgh 10,365-372.
- Moore, C. (1871). 'Remarks on the botany of Lord Howe's Island'. Trans.Roy.Soc.New South Wales 5,29-34.
- Moore, C. and Betche, E. (1893). List of Lord Howe Island and Norfolk Island plants in Handbook of the flora of New South Wales. Government Printer, Sydney p.518.
- Moore, K.M. (1968). Insect attack in palms. Forestry Commission of N.S.W., Sydney.

- Morton, A. (1882). Report to the trustees of the Australian Museum. In Wilson, J.B. Lord Howe Island (Report on present state and future prospects). Notes and Proceedings of the Legislative Assembly of New South Wales, 1882, 4,1463.
- Mueller, F. Von (1858-81). Fragmenta Phytogeographiae Australiae. Vols.1 (1858-9) to 11 (1878-81).
- Mueller, F. Von (1875). Index omnium Insulare Howeanae plantarum, quas hactenus obtinui exclusis speciebus certe introductis. Fragmenta Phytogeographiae Australiae. Vol 9,76-78.
- Oliver, W.R.B. (1917). 'The vegetation and flora of Lord Howe Island'. Trans. & Proc. N.Z.Inst. 49,94-161.
- Paramanov, S.J. (1958). 'Lord Howe Island, a riddle of the Pacific, Part I'. Pacific Sci. 12,82-91.
- Paramanov, S.J. (1960). 'Lord Howe Island, a riddle of the Pacific, Part II'. Pacific Sci. 14,75.
- Paramanov, S.J. (1963). 'Lord Howe Island, a riddle of the Pacific, Part III'. Pacific Sci. 17,361-373.
- Pickard, J. (1972). Examination of palms on Lord Howe Island. Royal Botanic Gardens, Sydney.
- Pickard, J. (1973). 'An annotated botanical bibliography of Lord Howe Island'. Contrib. New South Wales Natl. Herb. 4,470-491.
- Pickard, J. (1974). Vegetation map and notes. Appendix C. in Environmental survey of Lord Howe Island. (Eds. H.F. Recher and S.S. Clark). Government Printer, Sydney, pp.27-36.

- Pickard, J. (1974). Lord Howe Island weeds. Appendix H. in Environmental survey of Lord Howe Island. pp.77-80.
- Pickard, J. (1976). 'The effect of feral goats (*Capra hircus* L.) on the vegetation of Lord Howe Island'. Austral.J.Ecol. 1,103-114.
- Pickard, J. (1977). Report prepared for the Lord Howe Island Board on palm seed industry. Royal Botanic Gardens, Sydney.
- Pickard, J. (1978). Vegetation of Lord Howe Island. Unpub.M.Sc.thesis. Botany Department, University of Sydney.
- Pickard, J. (1980). 'The palm seed industry of Lord Howe Island'. Principes 24,3-13.
- Pickard, J. (1982). 'Vegetation of Little Slope, Lord Howe Island: several millenia of catastrophic disturbance'. Austral.J.Ecol. (in press)
- Pickard, J. (1982). Rare or threatened vascular plants of Lord Howe Island. Royal Botanic Gardens, Sydney.
- Pickard, J. (1983). 'Vegetation of Lord Howe Island'. Cunninghamia 1 (2), 133-266
- Recher, H.F. and Clark, S.S. (Eds.) (1974). Environmental survey of Lord Howe Island. Government Printer, Sydney.
- Rodd, A.N. (1974). Checklist of angiosperms. Appendix B. in Environmental survey of Lord Howe Island. (Eds. H.F. Recher and S.S. Clark). Government Printer, Sydney. pp.21-25.
- Rodd, A.N. (1980). Weed situation on Lord Howe Island. Royal Botanic Gardens, Sydney.

- Rodd, A.N. (1981). XIII International Botanical Congress-Field trip 17, Lord Howe Island. Australian Academy of Sciences, Canberra.
- Rodd, A.N. and Pickard, J. (1983) 'Census of vascular flora of Lord Howe Island'. Cunninghamia. 1 (2), 269-280.
- Sprague, T.A. (1944). 'A new species of Rapanea (Myrsinaceae) from Lord Howe Island'. Proc.Linn.Soc.Lond. Session 155,288-290.
- Stephani, F. and Watts, W.W. (1914). 'Hopaticae australes'. J. & Proc.Roy.Soc.New South Wales. 48,94-135.
- Tate, R. (1892). On the affinities of the Florutas of Lord Howe Island and Norfolk Island. In Report of the 4th Meeting of Australasian Association for the Advancement of Science. p.407.
- Tate, R. (1892). 'The geographic relations of the floras of Norfolk and Lord Howe Islands'. Macleay Mem. Vol.205-221. Linn.Soc.N.S.W.
- Thelling, A. (1906). Die gattung Lepidium (L). Zurich.
- Urwin, N. (1984). Department of Environment and Planning. Lord Howe Island Group Regional Environmental Study. Vegetation of Lord Howe Island. For the Lord Howe Island Board. July/August.
- Waite, E. (1902). Visit to Lord Howe Island. Unpub. notebook in Adelaide Museum.
- Watson, W. (1972). Examination of palms on Lord Howe Island. Lord Howe Island Board, Department of Lands, Sydney.

Watts, W.W. (1912). 'The ferns of Lord Howe Island'. Proc.Linn.Soc. N.S.W. 37, 395-398.

Watts, W.W. (1914). 'Additional notes on the ferns of Lord Howe Island'. Proc.Linn.Soc.N.S.W. 39,257-262.

Watts, W.W. (1915). 'Two Lord Howe Polypodia'. J. & Proc.Roy.Soc. New South Wales 49,395-398.

White, H.J. (1853). Report on Lord Howe's Island. Votes and Proceedings of Legislative Council of New South Wales, 1853, 2,717-718.

Whitelegge, T. (1892). 'List of twenty species of mosses collected at Lord Howe Island'. Proc.Linn.Soc.N.S.W. (2nd Ser.) 7,277.

Wilson, J.B. (1882). Lord Howe Island (Report on present state and future prospects). Votes and Proceedings of the Legislative Assembly of New South Wales, 1882, 4,1463.

(c) Wildlife

Allen, J. and Iredale, T. (1939). A review of the relationships of the Mollusca of Lord Howe Island. Report of the Australian and New Zealand Association for the Advancement of Science. 24th Meeting, Canberra, January, 1939. p.113.

Anon. (1883). 'Exhibition of a collection illustrative of the fauna of Lord Howe Island'. Proc.Linn.Soc.N.S.W. 7,206.

Baker, H.B. (1941). 'Zonitid snails from Pacific Islands'. Parts 3 and 4. B.P. Bishop Mus.Bull. 166,202-370; pls.43-65.

- Bennett, G. (1869). 'Letter to the Secretary, relating to the zoology of Lord Howe Island'. Proc.Zool.Soc.Lond. 471-473.
- Berland, L. (1934). 'Les Araignees du Pacifique'. Zool.Bot.des Iles Pacif.Soc.Biogeog. IV,155-80.
- Bousfield, E.L. (1976). 'A new terrestrial amphipod from Lord Howe Island'. Rec.Aust.Mus. 30,118-122.
- Brazier, J.W. (1872). 'Tornatellina sp. and Simpulopsis masteri'. Proc.Zool.Soc.Lond. 1872,619.
- Colman, P.H. (1974). Appendix E. Terrestrial molluscan survey. In Environmental survey of Lord Howe Island. A report to the Lord Howe Island Board. (Eds. Recher, H.F. and Clark, S.S.) N.S.W. Govt.Printer, Sydney. pp.47-48.
- Etheridge, R. (1889). 'The general zoology of Lord Howe Island'. Mem.Aust.Mus. 2,3-42 and 101-126.
- Etheridge, R. (1891). 'A much thickened variety of Bulimus bivaricosus (Gaskoin) from Lord Howe Island'. Rec.Aust.Mus. 1,130.
- Gray, M.R. (1974). Appendix E. Survey of the spider fauna. In Environmental survey of Lord Howe Island. A report to the Lord Howe Island Board (Recher, H.F. and Clark, S.S.) N.S.W. Govt.Printer. pp.50-54.
- Gressitt, J.L. (1956). 'Some distribution patterns of Pacific Island fauna'. Syst.Zool. 5,11-33, 47.
- Hall, Leslie and Richards, G. C. (1979). Bats of Eastern Australia. Queensland Museum Booklet No. 12.

Hedley, C. (1892). The range of *Placostylus*: a study in ancient geography. Proc.Linn.Soc.N.S.W. 7,335-9.

Hedley, C. (1899). 'A zoogeographic scheme for the Mid-Pacific'. Proc.Linn.Soc.N.S.W. 24,391-417.

Hedley, C. (1912). 'The Polyplacophora of Lord Howe Island'. Proc.Linn.Soc.N.S.W. 37,271.

Hutchings, P. (1974). Appendix E. Status of annelid fauna. In Environmental survey of Lord Howe Island. (Recher, H.F. and Clark, S.S.) N.S.W. Govt.Printer, Sydney. p.48.

Iredale, T. (1918). 'Preliminary note on Roy Bell's molluscan collection'. Proc.Mal.Soc.Lond. 13,28.

Iredale, T. and Allen, J. (1940). 'A review of the relationships of the mollusca of Lord Howe Island'. Aust.Zool. 9,444-451.

Iredale, T. (1944). 'The land mollusca of Lord Howe Island'. Aust.Zool. 10,229-334.

Jamieson, B.G.M. (1977). 'Earthworms (Megascolecidae: Oligochaeta) of Lord Howe Island'. Rec.Aust.Mus. 30(12), 272-308.

McCulloch, A.R. (1921). 'Lord Howe Island: a naturalist's Paradise'. Aust.Mus.Mag. 1(2),30-47.

- McKay, R.J. (1979). 'Wolf spiders of Australia. New species from Lord Howe Island'. Memoirs of the Queensland Museum 19(3),237-240.
- McKean, J.L. (1975). 'The Bats of Lord Howe Island with the description of a new Nyctophiline Bat'. J.Aust.Mammal Soc. 1(4), 329-332.
- McKean, J.L., Richards, G.C. and Price, W.J. (1978). 'A taxonomic appraisal of Eptesicus (Chiroptera: Mammalia) in Australia'. Aust.J.Zool. 26(3), 529-537.
- Miller, B. (1982). Feral cat problem on Lord Howe Island. National Parks & Wildlife Service, Sydney.
- Morton, A. (1882). Report by Taxidermist to Australian Museum. In Wilson, J.B. Lord Howe Island (Report on present state and future prospects) Notes and Proceedings of the Legislative Assembly of New South Wales, 1882, 4,1463-1474.
- Mullette, K.J. (1982). Domestic cats on Lord Howe Island. National Parks and Wildlife Service, Sydney.
- Ogilby, D.J. (1898-9). 'Additions to the fauna of Lord Howe Island'. Proc.Linn.Soc.N.S.W. 23,730.
- Pope, E.C. (1960). 'The natural history of Lord Howe Island'. Aust.Mus.Mag. 13(7),207-210.
- Pope, E.C. (1969). 'A Naturalist on Lord Howe Island, Part I'. Wild Life 12,549-554.

- Pope, E.C. (1969). 'The natural history of Lord Howe Island'. Aust. Mus. Mag. 13,207-210.
- Rainbow, W. (1930). 'The spiders of Norfolk and Lord Howe Islands'. J.R.Soc.S.Aust. 29,229-271.
- Ramsay, E.P. (1882). 'Notes on the zoology of Lord Howe Island'. Proc.Linn.Soc.N.S.W. 7,86-90.
- Ramsay, E.P. (1889). Lord Howe Island, its zoology, geology and physical characters. Australian Museum, Sydney. 132 pp.
- Recher, H.F. and Clark, S.S. (1974). 'A biological survey of Lord Howe Island with recommendations for the conservation of the Island's wildlife'. Biolog.Conserv. 6(4),263-273.
- Recher, H.F. and Clark, S.S. (1974). 'Exploitation vs Conservation'. Aust.Nat.Hist. 18(2),74-97.
- Recher, H.F. and Clark, S.S. (1974). Environmental survey of Lord Howe Island. A report to the Lord Howe Island Board. N.S.W. Govt.Printer, Sydney.
- Richardson, L.R. (1969). 'Quantenobdella howensis Richardson 1969 of Lord Howe Island, with comment on dispersal by passive transport (Hirudinoidea:Richardsonianidae)'. Mem.Natn.Mus.Vict. 33,65-72.
- Roux, J. (1926). 'An account of Australian Atyidae'. Rec.Aust.Mus. 15,237-254.
- Smithers, C., McAlpine, D., Colman, P.H. and Gray, M. (1974). 'Island invertebrates'. Aust.Nat.Hist. 18(2), 60-63.

Vandel, A. (1973). 'Les Isopodes terrestres de l'Australie etude systematique et biogeographique'. Mem.Mus. d'Hist.Nat.Ser.A.Zool. 82,1-171.

Whitley, G.P. (1938). 'Naturalists of the First Fleet'. Aust.Mus. Mag. 6,291-304.

(i) Birds

Anderson, K. (1983). 'How we saved the rarest bird. The Lord Howe Island Woodhen'. Daily Telegraph 22nd January, pp.18-19.

Anon. (1906). History of the collections contained in the Natural History Department of the British Museum, London. Vol.2, Birds: pp.79 et seq.

Australia. Australian National Parks and Wildlife Service. (1978). 'Lord Howe Island Woodhen'. Australian Engandered Species-BIRDS,No.16.

Bailey, A. and Sorenson, J. (1902). 'Sub-Antarctic Campbell Island'. Denver Mus.Proc. 10,1-305.

Bell, R. (1913-4). Lord Howe Island Journal. (Bird collections, etc.) Unpub. (Xerox copy from typescript of handwritten Ms.) Available Aust.Mus. Library, Sydney.

Bennett, G. (1869). 'Letter on birds of Lord Howe Island'. Proc.Zool.Soc.Lond. 18,471-473.

Brown, I. (1979). 'Birds of Balls Pyramid'. Australian Birds 13(3),41-42.

- Campbell, A.J. (1901). Nests and eggs of Australian birds.
Sheffield. Aust.Mus.Lib. No.10243.
- Checklist (1926). Official checklist of the Birds of Australia.
R.A.O.U. (2nd edition).
- Cleland, J.B. (1911). 'Stomach contents of birds from Lord Howe
Island'. Emu 11,94-95.
- Delacour, J. (1966). Guide des oiseaux de la Nouvelle-Caledonie et
de ses dependancies. Editions Delachaux & Niestle, 32
rue de Grenelle, Paris, VII.
- Disney, H.J. de S. and Smithers, C.N. (1969). 'Distribution of
terrestrial and freshwater birds on Lord Howe Island in
comparison with Norfolk Island'. Australian Museum,
Sydney.
- Disney, H.J. de S. and Smithers, C.N. (1972). 'The distribution of
terrestrial and freshwater birds on Lord Howe Island in
comparison with Norfolk Island'. Aust.Zool. 17,1-11.
- Disney, H.J. de S. (1974a). 'Woodhen'. Aust.Nat.Hist. 18(2), 70-72.
- Disney, H.J. de S. (1974b). Appendix G. Survey of the woodhen. In
Environmental survey of Lord Howe Island. A report to
the Lord Howe Island Board. (H.F. Recher and S.S. Clark)
(Eds.) N.S.W. Govt.Printer, Sydney. pp.73-76.
- Disney, H.J. de S. (1975). Report on progress of Lord Howe Island
Woodhen Survey, 21st February-5th March 1975. Interim
report prepared for Commonwealth Department of the
Environment.

- Disney, H.J. de S., Fullagar, P.J. and Hall, L.S. (1976). Report on the Woodhen of Lord Howe Island. Prepared for the Commonwealth Department of the Environment.
- Disney, H.J. de S. (1977). Ornithological research and management programmed for Lord Howe Island. Report prepared for Lord Howe Island Board, Department of Lands, Sydney.
- Disney, H.J. de S. (1978). Report on visit to Lord Howe Island. 8th March-19th March 1978. Prepared for the N.S.W. National Parks and Wildlife Service.
- Disney, H.J. de S. and Fullagar, P.J. (1978). Report on visit to Lord Howe Island, 23rd September-2nd October 1978. Prepared for N.S.W. National Parks and Wildlife Service.
- Edgecombe, J. (1983). 'Survival at a price. The case of the Lord Howe Island Woodhen'. Habitat Australia February, 1983, pp.12-13.
- Falla, R.A. (1937). RANZ. Antarctic Research Expedition 1929-31. Report series B, Vol.2 (Birds).
- Falla, R.A. (1942). 'Review of the smaller Pacific forms of Pterodroma and Cookilaria'. Emu 42,2-11.
- Finlay, K. (1979). 'A rare bird in a secret kingdom'. The Australian Women's Weekly 17th October, pp.37-39.
- Fitzgerald, R.D. (1870). 'On birds of Lord Howe Island in Hill's Lord Howe Island'. N.S.W. Parliamentary Papers 1,635-654.

Fullagar, P.J., McKean, J.L. and van Tets, G.F. (1974). Appendix F. Report on the birds. In Environmental survey of Lord Howe Island. A report to the Lord Howe Island Board. (H.F. Recher and S.S. Clark) N.S.W. Govt. Printer, pp.55-72.

Fullagar, P.J. and Disney, H.J. de S. (1975). 'The birds of Lord Howe Island. A report on the rare and endangered species'. 12th Bull.Internat.Council Bird Pres., 1975, 187-202.

Fullagar, P.J., Disney, H.J. de S. and de Naunois, R. Additional specimens of two rare rails and comments on the genus Tricholimnas of New Caledonia and Lord Howe Island. (in press)

Gibson, J.D. (1960). 'Sea birds log. Sydney to Capetown and Panama to Sydney'. Emu 60,11-19.

Gray, G.R. (1862). 'A list of the birds of New Zealand and the adjacent islands'. Ibis 4,214-252.

Greenway, J.C. (1950). Extinct and Vanishing Birds of the World. Dover Publications Inc., New York.

Halliday, T. (1978). Vanishing Birds, Their Natural History and Conservation. Hutchinson, Melbourne.

Hammer, W.H. (1936). 'Notes on the birds of Lord Howe Island'. Bird Notes and News 17(2), 39-43.

Harris, N.V. (1941). Birdlife. Chief Secretary's Department, Sydney.

- Henry, D. (ed.)(1983). 'The Lord Howe Island group'. Wildlife Australia 20(2),8-11.
- Hindwood, K.A. (1938). 'Extinct birds of Lord Howe Island'. Aust. Mus.Mag. 6,319-324.
- Hindwood, K.A. (1940). 'The birds of Lord Howe Island'. Emu 40,1-86.
- Hindwood, K.A. (1946). 'The stomach contents of young mutton birds'. Emu 46,71-73.
- Hindwood, K.A. (1948). 'The occurrence overseas of the New Zealand Bronze Cuckoo Chalcites lucidus lucidus (Gmelin)'. N.Z.Sci.Rev. 6,60-61.
- Hindwood, K.A. and Cunningham, J.M. (1950). 'Notes on the birds of Lord Howe Island'. Emu 50,23-35.
- Hindwood, K.A. (1961). 'The occurrence of the Little Bittern on Lord Howe Island'. Emu 61,141-142.
- Hindwood, K.A. (1965). 'The "Sydney" bird paintings'. Aust. Zool. 13,83-92.
- Hitchcock, W.B. and Carrick, R. (1958). 'First report of banded birds migrating between Australia and other parts of the world'. CSIRO Wildl.Research 3,54-70.
- Hull, A.F. Bassett (1909). 'Birds of Lord Howe Island and Norfolk Island'. Proc.Linn.Soc.N.S.W. 34,636 and 693; and Emu 11,58-61.

Hull, A.F. Bassett (1910). 'Further notes on the birds of Lord Howe Island and Norfolk Island'. Proc.Linn.Soc.N.S.W. 35,783-787.

Hull, A.F. Bassett (1913). List of birds peculiar to Lord Howe Island and Norfolk Island. Appendix B in R.A.O.U. Checklist.

Iredale, T. (1910). 'An additional note on the birds of Lord Howe Island and Norfolk Island'. Proc.Linn.Soc.N.S.W. 35,773-782.

Iredale, T. (1924). 'As extinct as the Dodo (on some Lord Howe Island birds)'. Aust.Mus.Mag. 2,117.

Keast, J.A. (1951). 'Mutton birds'. Aust.Mus.Mag. 10,211.

Kinsky, F.C. (1960). 10th Annual report of the banding committee, Orn.Soc.N.Z.Inc., for year ending March, 1960.

Lawry, K. (1926). 'A sea bird's haven'. Emu 22,69-71.

Lincoln, F. (1935). 'The migration of North American birds'. U.S. Dep.Ag. Circular No. 363, October, 1935.

Mathews, G.M. (1915). 'Raperia godmanae: a new bird from Lord Howe Island, now extinct'. Aust.Avian Rec. 3,21-24.

Mathews, G.M. (1910-26). A List of Birds of Australasia. London.

- Mathews, G.M. (1928). Birds of Norfolk and Lord Howe Island. London; and supplement to Birds of Norfolk and Lord Howe Island, London, 1936.
- Mayr, E. (1934). 'Taxonomic notes on the birds of Lord Howe Island'. Emu 40,321-322.
- McCaskill, L.W. (1943). 'The invasion of N.Z. by Spine-tailed Swifts in summer of 42-3'. N.Z. Bird Notes 1,38-40.
- McCulloch, A.R. (1923). 'A nesting colony of sea birds on Admiralty Rocks at Lord Howe Island'. Aust.Mus.Mag. 1,257.
- McKean, J.L. (1963a). 'Lord Howe Expedition'. The Bird Bander 1,84-90.
- McKean, J.L. (1963b). 'Wideawakes and bird egging. Lowe Howe Island'. Lord Howe Island Signal 2,90-92.
- McKean, J.L. and Hindwood, K.A. (1965). 'Additional notes on the birds of Lord Howe Island'. Emu 64,79-97.
- Miller, B. (1978-81). Woodhen conservation programme. National Parks & Wildlife Service, Sydney. N.S.W.
- Miller, B. and Kingston, T. (1980). 'Lord Howe Island Woodhen'. Endangered Species of New South Wales. National Parks and Wildlife Service, Sydney.
- Miller, B. and Kingston, T. Lord Howe Island Woodhen, undated.
- Miller, B. (1981). 'Liberate the Woodhen, the theme of the 80's'. Napawi, Staff Newsletter of the National Parks and Wildlife Service. 9(20),17-19.

- Murphy, R.C. (1936). Oceanic Birds of South America. New York.
- North, A.J. (1890). 'Notes on the identification of Merula vinitincta (Gould) and Ocydromus sylvestris from Lord Howe Island'. Rec.Aust.Mus. 1,36-37.
- North, A.J. (1892). 'Additions to the avifauna of Tasmania, Norfolk and Lord Howe Island'. Rec.Aust.Mus. 3,36-38.
- North, A.J. (1898). 'On the extension of the range of Phaethon candidus to N.S.W. and Lord Howe Island'. Rec.Aust.Mus. 3,89-90.
- North, A.J. (1901-14). Special Catalogue No. 1 (Australian Museum). Nests and eggs of birds found breeding in Australia and Tasmania. vols. 1-IV. Catalogue No. 13, pp.372-379. Australian Museum, Sydney.
- North, A.J. (1904). 'Ornithological notes'. Rec.Aust.Mus. 5,52-120 and 338.
- Oliver, W.R.B. (1912). 'The geographical relationships of the birds of Lord Howe Island, Norfolk and the Kermadec Islands'. Trans.N.Z.Inst. 44,214-221.
- Peters, J.L. (1934). Checklist of Birds of the World. Vol.2. Harvard Univ. Press., Cambridge. Mass.
- Ramsay, E.P. (1879). 'Description of a new species of Rhipidura from Lord Howe Island'. Proc.Linn.Soc.N.S.W. 3,340.

- Ramsay, E.P. (1888a). 'Descriptions of the eggs of 3 species of sea birds from Lord Howe Island'. Proc.Linn.Soc.N.S.W. 2,678-679.
- Ramsay, E.P. (1888b). Tabular list of Australian birds (spp. found on Lord Howe Island and Norfolk Island, pp.37-38). Sydney.
- Recher, H.F. (1974). 'Colonisation and extinction. The birds of Lord Howe Island'. Aust.Nat.Hist. 18(2),64-68.
- Salvadori, T. (1891). Catalogue of Birds. British Museum, London. Vol.10, 543.
- Serventy, D.L., Serventy, V., and Warham, J. (1971). The handbook of Australian sea birds. A.H. and A.W. Reed, Sydney.
- Sharland, M.S.R. (1927). 'Lord Howe Island Birds'. The Australian Naturalist 7, 2 and 19-21.
- Sharland, M.S.R. (1929). 'Land birds of Lord Howe Island'. Emu 29,5-11.
- Sharpe, R.B. (1881). 'On some flycatchers lately added to the collection of the British Museum'. Proc.Linn.Soc.London 1881, 788-790.
- Sharpe, R.B. (1896). Catalogue of Birds. British Musuem, London. Vol.24, 599.
- Souef, A.S. Le (1924). 'Land birds visiting Lord Howe Island'. Emu 24,153.

Thomson, A. (1935). Bird Migration. Landsborough, London.

Van Tets, G.F. and Fullagar, P.J. (1974). 'Of sketches, skins and skeletons'. Aust.Nat.Hist. 18(2),72-73.

Von Pelzenu (1873). 'Birds in the Imperial Collection at Vienna'. Ibis 3,14.

Whitley, G.P. (1937). 'The Middleton and Elizabeth Reefs. South Pacific Ocean'. Aust.Zool. 8,212-214.

Williams, G.R. (1953). 'The dispersal from New Zealand and Australia of some introduced European Passerines'. Ibis 95,676.

(ii) Insects

Ashton, J.H. (1921). 'A revision of the Australian Cicadidae, Part I'. Proc.R.Soc.Vict. 33,37.

Bezzi (1928). Diptera Brachycera and Athericera of the Fiji Islands. Based on material in the British Museum (Natural History), London. (Records Australian species, and describes new forms from Lord Howe Island collected by H.W. Simmonds).

Bradley, J.D. (1950). 'Microlepidoptera from Lord Howe Island'. Bull.Br.Mus.Nat.Hist. B, 4,145.

Brunner von Wattenwyl, C. (1893). 'Revision du Systeme des Orthopteres et Description des Especies Rapportees pour M.Leonardo Fea de Birmanie'. Ann.Mus.Civ.Stor.Nat.Genova (2) 13,5.

Carey, S.W.(ed.)(1958). Insect distribution and continental drift. Symposium No. 2.Geology Dept.University of Tasmania. pp.134-161.

Carter, H.F. (1920). 'Notes on some Tenebrionidae and descriptions of new species: also of a new genus and species of Buprestidae'. Proc.Linn.Soc.N.S.W. 45,222.

Carter, H.F. (1920). 'Revisional notes on the family Cistelidae'. Trans.R.Soc.Sth.Aust. 44,198-217.

Carter, H.F. (1921). 'Description of the adult larval and pupal stages of a new mosquito from Lord Howe Island'. Proc.Zool.Soc.Lond. 4,623-628.

Cockerell, T.D.A. (1929). 'Bees from the Australian Region'. Amer. Mus.Novit. 346,1-18.
See also: (1) Descriptions and records of bees. CXV-CXVII. Ann.Mag.Nat.Hist. 10(3),354; and Ann.Mag.Nat.Hist. 10(4),132.
(2) 'Bees in the Australian Museum'. Rec.Aust.Mus. 17,199.

Dodd, A. (1924). 'Chalcidoidea and Proctotrupoidea from Lord Howe Island'. Trans.R.Soc.S.Aust. 48,162.

Evans, J.W. (1959). 'The Peloridiidae of Lord Howe Island'. Rec. Aust.Mus. 25,57-62.

Evans, J.W. (1968). 'Biogeographical significance of the Peloridiidae (Homoptera, Coleo-rhyncha) and a new species from Lord Howe Island'. Proc.R.Soc.Qld. 79,17-24.

- Evans, J.W. (1973). 'Howefulvius elytratus gen. n. sp. n. (Heteroptera, Miridae, Fulviinae) from Lord Howe Island in the Tasman Sea'. Acta. ent. bohemoslov 70,400-407.
- Gressitt, L. (1961). 'Problems in the zoogeography of Pacific and Antarctic Insects'. Pacific Insects Monog. 2,1-94.
- Hale, H.M. (1926). 'Studies in Australian aquatic Hemiptera. No. VII, Gymnocerata'. Rec.S.Aust.Mus. 3,195.
- Hill, G.F. (1925). 'The distribution of Anopheline mosquitoes in the Australian region and notes on some Culicine species'. Proc.R.Soc.Vict. (ns) 37,61.
- Hincks, W.D. (1947). 'Dermaptera from New Hebrides and Lord Howe Island'. Ent.Mon.Mag.Lond. 83,65-67.
- Johnston, H.T. and Hardy, G.H. (1923). 'Some sarcophagid flies from Lord Howe Island'. Rec.Aust.Mus. 14,62.
- Knight, K.L. and Marks, E.N. (1952). 'An annotated checklist of the mosquitoes of the subgenus Finlaya and genus Aedes'. Proc.U.S. Nat.Mus. 101(3233),513-574.
- Laing, F. (1925). 'Descriptions of some new genera and species of Coccidae'. Bull. Ent. Res. 16,51-66.
- Lea, A.M. (1909). 'Revision of the Australian Curculionidae belonging to the subfamily Cryptorhynchides'. Part 10. Proc.Linn.Soc.N.S.W. 34,593-635.
- Lea, A.M. (1916). 'Notes on Lord Howe Island Phasma and on associated Longicorn Beetle'. Trans.R.Soc.S.Aust. 40,145.

- Lea, A.M. (1925). 'On Australian Staphylinidae (Coleoptera)'. Part 2. Trans.R.Soc.S.Aust. 49. Lord Howe Island spp. pp.213, 214, 217, 221, 225, 234, 238.
- Lea, A.M. (1925). 'On Australian Histeridae (Coleoptera)'. Trans.R. Ent. Soc.Lond. 1924, pts. 3-4, pp.239-263, pl.38.
- Lea, A.M. (1926). 'On the Genus *Mandalotus* (Coleoptera, Curculionidae)'. Rec.S.Aust.Mus. 3,147-193.
- Lea, A.M. (1926). 'Notes on some miscellaneous Coleoptera with descriptions of new species'. Part 6. Trans.R.Soc.S.Aust. 50,45-84.
- Lea, A.M. (1927). 'Descriptions of new species of Australian Coleoptera. Part 19'. Proc.Linn.Soc.N.S.W. 52,354-377.
- Lea, A.M. (1927). 'The clawless and apparently clawless Curculionidae of Australia'. Trans.R.Soc.S.Aust. 51,144-168.
- Lea, A.M. (1928). 'Australian Curculionidae of the subfamilies Haplonycides and Cryptorhynchides'. Trans.R.Soc.S.Aust. 52,95-164, pls. 7-9.
- Lea, A.M. (1928). 'Cryptorhynchides (Curculionidae) mostly from Australia'. Rec.S.Aust.Mus. 4,49-90.
- Lea, A.M. (1929). 'Notes on some miscellaneous Coleoptera with descriptions of new species'. Part 7. Trans.R.Soc.S.Aust. 53,203-244.

- Lea, A.M. (1929). 'Notes on Coleopterous genus Ampagia (Curculionidae) with descriptions of new species'. Trans.R. Ent. Soc.Lond. 77,185-194, pl. 16.
- McAlpine, D.K. (1966). 'Rediscovery of Lord Howe Island Phasmid'. Aust. Ent. Soc.News.Bull. 2,71.
- McAlpine, D.K. (1973). 'The Australian Platystomatidae (Diptera, Schizophora) with a revision of the five genera'. Mem.Aust.Mus. 15,1-256.
- McAlpine, D.K. (1978). 'A new species of Cypselosomatidae from Lord Howe Island (Diptera, Micropezoidea)'. Aust. Ent. Mag. 5(4),61-64.
- Olliff, A.S. (1889). The insect fauna of Lord Howe Island. In Etheridge, R. The general zoology of Lord Howe Island. Its zoology, geology and physical characteristics. Mem.Aust.Mus. 2,75-98.
- Olliff, A.S. (1890). 'Additions to the insect fauna of Lord Howe Island and descriptions of two new Australian Coleoptera'. Rec.Aust.Mus. 1,72.
- Paramonov, S.J. (1957). 'Notes on Australian Diptera. On some new Ortalids (Acalyptrata)'. Ann.Mag.Nat.Hist. 10,779-781.
- Paramonov, S.J. (1958). 'A review of Australian spp. of Laphia (Asilidae, Diptera) with descriptions of three new species from Lord Howe Island'. Pacif.Sci. 12,92-105.
- Paramonov, S.J. (1962). 'A review of Australian Leptidae (Diptera)'. Aust.J.Zool. 10,113-169. (includes description of one new Lord Howe Island species.)

Parsons, P.A. and Bock, I.R. (1979). 'Australian endemic *Drosophila* (Lord Howe Island)'. Aust.J.Zool. 27(6),973-980.

Pascoe, F.P. (1874). 'Contributions towards a knowledge of the Curculionidae'. Part IV. J.Linn.Soc.Zool. 12,1.

Pascoe, F.P. (1874). 'Additions to the Australian Curculionidae'. Parts VI, VII. Ann.Mag.Nat.Hist. 13,383-412. 4th Series.

Pascoe, F.P. (1875). 'Notes on Coleoptera'. Part III. Ann.Mag.Nat.Hist. 15,59. 4th Series.

Pascoe, F.P. (1875). 'Additions to the Australian Curculionidae'. Part VIII. Ann.Mag.Nat.Hist. 16,55. 4th Series.

Peters, J.V. (1969). 'The Butterflies of Lord Howe Island'. Proc. R.Zool.Soc.N.S.W. 1967-8, 63-64.

Saunders, W.W. and Jekel, H. (1855). 'Descriptions de quelques Curculionites'. Ann.Soc.Ent.France. 3,289.

Simmonds, H.W. (1924). Lord Howe Island and Norfolk Island. Legislative Council of Fiji Council Paper No. M.P. 1069/24, p.13.

Smithers, C.N. (1970). 'Observations on Lord Howe Island Butterflies'. Aust.Zool. 15(3), 377-379.

Smithers, C.N. (1970). 'On some remains of the Lord Howe Island Phasmid (*Dryococelus australis* (Montrouzier)) (Phasmida) from Balls Pyramid'. Entomologist's Mon.Mag. 105, 252.

- Smithers, C.N. (1971). 'A note on Lord Howe Island Butterflies'.
J.Aust. Ent. Soc. 10,299-300.
- Smithers, C.N. (1974). Note on the island's butterflies. In
Environmental Survey of Lord Howe Island. A report to
Lord Howe Island Board (Recher, H.F. and Clark, S.S.)
N.S.W. Govt.Printer. pp. 49-50.
- Smithers, C.N. and Thornton, I.W.B. (1975). 'The Psocoptera
(Insecta) of Lord Howe Island'. Rec.Aust.Mus. 29(16),
453-472.
- Stickney, F.S. (1934). 'The external anatomy of the red date scale
Phoenicodcus marlatti Cockerell and its allies'.
Tech.Bull. U.S.Dept.Agric. No.404, 1-103.
- Thomson, J. (1864). Systema Cerambycidae ou expose de tous les
genres compris dans la famille des Cerambycides et
familles limitrophes. Liege Paris. L.H. Is. spp. in
books 1-3. See Dept.Ag.Lib.N.S.W.
- Tillyard, R.J. (1918). 'Odonata, Plannipennia and Trichoptera from
Lord Howe and Norfolk Islands'. Proc.Linn.Soc.N.S.W.
42,529.
- Tonnoir, A.L. (1923). 'Notes on Australian Rhyphidae'.
Ann.Mag.Nat.Hist. 12,502.
- Turner, A.J. (1913-7). 'On some moths from Lord Howe and Norfolk
Islands in the South Australian Museum'.
Trans.R.Soc.S.Aust. 41 and 42.
- Turner, A.J. (1918). 'Further notes on some moths from Lord Howe
Island'. Trans.R.Soc.S.Aust. 42,276.

- Turner, A.J. (1922). 'Some Australian moths from Lord Howe Island'.
Proc.Linn.Soc.N.S.W. 47,439.
- Waterhouse, G.A. (1897). 'The Rhopalocera of Lord Howe Island'.
Proc.Linn.Soc.N.S.W. 22,285-287.
- Waterhouse, G.A. and Turner, R.E. (1904-5). 'Notes on Australian
Rhopalocera: Lycaenidae'. Part IV. Proc.Linn.Soc.N.S.W.
29,798.
- Waterhouse, G.A. (1912). 'Notes on Australian Lycaenidae'. Part V.
Proc.Linn.Soc.N.S.W. 37,558 and 559.
- Waterhouse, G.A. (1920). 'Description of new forms of butterflies
from the South Pacific'. Proc.Linn.Soc.N.S.W. 45,468.
- Wheeler, W.M. (1919). 'The Ant Genus Metapone (Forel)'. Ann. Ent.
Soc. Amer. 12,173.
- Wheeler, W.M. (1919). 'The Ant Genus Lodomyrma'. Psyche (Boston)
26,97.
- Wheeler, W.M. (1927). 'Ants of the Genus Amblyopone'. Proc. Am. Ac.
Arts. Sci. 67,1.
- White, A. (1857). 'Descriptions of some Coleopterous insects in the
collection of the British Museum hitherto apparently
unnoticed'. Proc.Zool.Soc.Lond. 326,406.

(iii) Marine Life

Anon. (1977). Survey of coral reef. Signal 3(85), 26.1.1977

Allen, G.R. and Paxton, J.R. (1974). 'A tropical outpost in the South Pacific'. Aust.Nat.Hist. 18(2), 50-55.

Australian Museum, Annotated Checklist of the Fishes of Lord Howe Island, Vol. 30, No. 15, December 21, 1976.

Allen, G.R., Hoese, D.F., Paxton, J.R., Randall, J.E., Russell, B.C., Stark, W.A. II, Talbot, F.H. and Whitley, G.P. (1976). 'An annotated checklist of the fishes of Lord Howe Island'. Rec.Aust.Mus. 30(15), 365-454.

Brazier, J.W. (1869). 'Shells: Lord Howe Island'. Sydney Morning Herald. June 16th, p.8.

Chilton, C. (1915). 'A freshwater crab and its distribution in Australia and New Zealand'. Trans.N.Z.Inst. 47, 316-320.

Dana, J.D. (1853-5). 'Crustacea'. Part II. United States Exploring Expedition during the years 1838-1842 under the command of Charles Wilkes, U.S.N. 13, 689-1618, 96 p|s.

Harrison, R. (1983) Lord Howe Island. The end of the rainbow. Fishing World, August 1983.

Hedley, C. (1891). 'The land and freshwater shells of Lord Howe Island'. Rec.Aust.Mus. 1(7), 134-144.

Hedley, C. (1897). 'Descriptions of new land shells'. Rec.Aust.Mus. 3, 45.

Highley E. 1967. Oceanic circulation patterns off the east coast of Australia. C.S.I.R.O. Fish. Oceanogr. Tech. Pap. 23, 1-19.

Iredale, T. (1937). 'Middleton and Elizabeth Reefs, South Pacific Ocean. Mollusca'. Aust.Zool. 8, 232-261.

Iredale, T. (1940). 'Marine molluscs from Lord Howe Island, Norfolk Island, Australia and New Caledonia'. Aust.Zool. 9(4),429-443.

Iredale, T. and Allen, J. 1940. A review of the relationships of the molluscs of Lord Howe Island. Aust. Zoologist 9(4), 444-451.

Kraft, G.T. (1977). 'Studies of marine algae in the lesser known families of the Gigartinales (Rhodophyta).11. Dicanemaceae'. J.Bot. 25,219-267.

Kraft, G.T. (1981). Marine algae. In Lord Howe Island. A summary of current and projected scientific and environmental activities. Eds, H.F. Recher and W.F. Ponder. Australian Museum, Sydney. Abstract, p.36.

Lucas, A.H.S. 1935. The marine algae of Lord Howe Island. Proc. Linn. Soc. N.S.W. 60, 194-232.

Lucas, J.S. (1980). 'Spider crabs of the family Hymenosomatidae (Crustacea; Brachyura) with particular reference to Australian species: systematics and biology'. Rec.Aust.Mus. 33,148-247.

Michell, P. (1970). Lord Howe Island '70. Australian Skindivers Magazine 20(6). pp.?

Nature Conservation Council, Lord Howe Island Marine Reserves, October, 1984.

Pollard, D.A. and Burchmore, J.J. (1985). Division of Fisheries, N.S.W., Department of Agriculture. Lord Howe Island Regional Environmental Study - The Marine Environment. Prepared for the Lord Howe Island Board. (Unpublished)

Ponder, W.F. (1982). 'Hydrobiidae of Lord Howe Island'. Aust.J.Mar. Freshwater.Res. 33(1),89-159.

Randall, J.E. (1976). The endemic shore fishes of the Hawaiian Islands, Lord Howe Island and Easter Island. Colloque Commerson. O.R.S.T.O.N. Travaux et Documents, No. 47.

Rowe, F.W.E. (1981). 'New genus and species in the family Ophidiasteridae (Echinodermata, Asteroidea) from the vicinity of the Tasman Sea'. Proc.Linn.Soc.N.S.W. 105(2),89-94

Veron, J.E.N. and Done, T.J. (1979). 'Corals and coral communities of Lord Howe Island'. Aust. J. Mar. Freshwater Res. 30(2),203-236.

Waite, E.R. (1904). 'Catalogue of the fishes of Lord Howe Island'. Res.Aust.Mus. 5(3),187-230.

(iv) Reptiles

Anderson, C. (1925). 'Notes on the extinct Chelonian Meiolania with a record of a new occurrence'. Rec.Aust.Mus. 14,223-242.

Anderson, C. (1926). 'The extinct horned turtle Meiolania'. Aust Mus.Mag. 2,360.

Boulenger, G.A. (1885). Catalogue of lizards. Brit.Mus.Nat.Hist., No. 1, pp.90, 152, 1885 and No. 3, p.269, 1887.

Brown, W.C. (1953). 'Results on the Archbold Expedition. No. 69. A review of the New Guinea lizards allied to Emoia baudini and Emoia physicae'. Am.Mus.Novit, No. 1627, pp.1-25.

Brown, W.C. (1954). 'Notes on several lizards of the genus Emoia with descriptions of new species from the Solomon Islands'. Fieldiana: Zoology 34, 263-276.

Cogger, H.G. (1971). 'The reptiles of Lord Howe Island'. Proc.Linn. Soc.N.S.W. 91,23-38.

Fletcher, H.O. (1960). 'Turtles of the past'. Aust.Mus.Mag. 13,191-195.

Mittermeier, R.A. (1972). 'Zoogeography of fossil and living turtles'. Aust.Nat.Hist. 17,265-269.

Ogilby, J.D. (1887). 'The reptiles and fish of Lord Howe Island'. Mem.Aust.Mus. 2,52-74.

Ogilby, J.D. 1889. The reptiles and fishes of Lord Howe Island. In Lord Howe Island, its zoology, geology and physical characters. Australian Museum, Sydney. pp 49-74.

Owen, R. (1886). 'Description of the fossil remains of two species of the Magalanian genus Meiolania from Lord Howe Island'. Phil.Trans.R.Soc.Lond. 177,471.

Zietz, F.R. (1920). 'Catalogue of Australian Lizards;'. Rec.S.Aust. Mus. 1,81-228.

(d) Geology and Soils

Anon. (1917). 'Notes on Diatomaceous Earth from Lord Howe Island'. Trans.R.Soc.S.Aust. 41,659.

See also:

Lord Howe Island. Australian Encyclopaedia, 1958. Vol.5, 368-370.

and

Progress report of Lord Howe Island collecting party.

Australian Museum Report of Trustees. N.S.W. Parliamentary Papers (Votes and Proceedings), 1887-89.2,175.

- Atkinson, G. (1984). Soils and land planning on Lord Howe Island. A.S.S.S.I. National Soils Conference. 13th-18th May, 1984.
- David, T.W.E. (1889). 'Notes on a collection of igneous rocks from Lord Howe Island'. Mem.Aust.Mus.2, 129-32.
- Edgeworth, D.T.V. (1889) 'Notes on a collection of igneous rocks from Lord Howe Island'. Mem.Aust.Mus.2,129.
- Etheridge, R. (1889). 'The physical and geological structure of Lord Howe Island'. Mem.Aust.Mus. 2,100-126.
- Game, P.M. (1970). 'Petrology of Lord Howe Island, Part 1. The younger volcanics'. Bull.Brit.Mus.Nat.Hist. (Mineralogy).2,223-284.
- Mattes, B. (1974). Aspects of the sedimentary geology of Lord Howe Island. 2 vols. Bachelor of Science (Hons.) Thesis, University of Sydney.
- McDougall, I., Embleton, B.J.J. and Stone, D.B. (1981). 'Origin and evolution of Lord Howe Island - Southwest Pacific Ocean'. J.Geol.Soc.Aust. 28,155-176.
- McDougall, I. and Van der Lingen, G.J. (1974). 'Age of the rhyolites of the Lord Howe Rise and the evolution of the southwest Pacific Ocean'. Earth Planet.Sci.Lett. 21,117-26.
- Percival, I. (1979). The geological heritage of New South Wales. Unpublished report to the Australian Heritage Commission and the New South Wales Planning and Environment Commission.

- Ploshko, V.V., Troneva, N.V. and Sukach, V.S. (1979) 'The principal features of the mineralogy of the Lord Howe Island oceanites (Pacific Ocean)'. Mineralog.Zhurn. 1,79-89. (In Russian)
- Slater, R.A. and Goodwin, R.H. (1973). 'Tasman Sea Guyots'. Mar.Geol. 14(2),81-99.
- Squires, D.F. (1963). 'Carbon 14 dating of the fossil dune sequence at Lord Howe Island'. Aust.J.Sci. 25,412-413.
- Standard, J.C. (1963). 'Geology of Lord Howe Island'. J. & Proc.Roy.Soc.N.S.W. 96,107-21.
- Standard, J.C. (1967). 'Islands and seamounts to the east of Australia'. Aust.Nat.Hist. December, 1967, 382-387.
- Sutherland, L. and Ritchie, A. (1974). 'Defunct volcanoes and extinct horned turtles'. Aust.Nat.Hist. 18(2),44-49.
- Wilkinson, H.T. (1882) Geological Report on Lord Howe Island. In Wilson, J.B. Lord Howe Island.(Report on present state and future prospects of Lord Howe Island.) Notes and Proceedings of the Legislative Assembly of New South Wales, 1882, 4,1463,pp.4-6 and 17-22..
- Willcox, J.B., Symonds, P.A., Hinz, K. and Bennett, D. (1980). 'Lord Howe Rise, Tasman Sea - preliminary geophysical results and petroleum prospects'. J.Aust.Geol.Geophys. 5,225-36.

(e) Topography and Hydrology

Conder, W.J. (1882). Report by Superintendent of trigonometrical survey. In Wilson, J.B. Lord Howe Island. (Report on present state and future prospects) Votes and Proceedings of the Legislative Assembly of New South Wales, 1882, 4, 1463-1474.

Ferrier, L.S. (1923). Lord Howe Island topographic occupation plan. (Plan LHI-2R). Crown Lands Office, Sydney.

Hamon, B.V. (1979). Mean sea level at Norfolk Island and Lord Howe Island. Report III. Division of Fisheries and Oceanography, C.S.I.R.O., Sydney.

Hayes, D.E. and Ringis, J. (1973). 'Seafloor spreading in the Tasman Sea'. Nature 243, 454-458.

MacDonald, J.D. (1872). 'Note sur la topographie et l'histoire naturelle de l'île de Lord Howe'. Archs. Med. nav. 17, 24.

Pollard, D.A. (1977). A proposed Lord Howe Island marine reserve: protecting the southern-most coral reef in the world. In Collected Abstracts and Papers of the International Conference on Marine Parks and Reserves, Tokyo, Japan, 12-14 May, 1975. Bull. Mar. Park Res. Sta. (Japan) 1, 71-79.

Pollard, D.A. (1981). 'Proposal for marine reserves'. In Lord Howe Island. A summary of current and projected scientific and environmental activities. Eds. Recher and Ponder. Aust. Museum, Sydney.

Randall, J.E. (1977). Lord Howe Island. A land and sea preserve. In Collected Abstracts and Papers of the International Conf. on Marine Parks and Reserves, Tokyo, 1975 Bull. Mar. Park Res. Sta. (Japan). 1, 69-71.

Rooney, W.S., Talbot, F.H. and Clark, S.S. (1978). The development of policy for marine reserves in Australia. Macquarie University, Sydney.

Rooney, W.S. (1981). 'Conservation of marine environments as affected by development alternatives'. In Lord Howe Island. A summary of current and projected scientific and environmental activities. Eds. Recher and Ponder. Australian Museum, Sydney.

Royal Australian Navy Hydrographic Service. (1965). Lord Howe Island and Ball's Pyramid. Chart Aust. 213.

Ryan, T.C. (1984) Department of Lands. Draft Discussion Paper, Hydrology, Lord Howe Island.

Van Der Linden, W.J.M. (1968). Lord Howe bathymetry. N.Z. Oceanogr. Inst. Chart Oceanic Series. 1:1,000,000.

Veron, J.E.N. (1974). Southern geographic limits to distribution of Great Barrier Reef Hermatypic Corals. Second International Coral Reef Symposium.

Veron, J.E.N. and Done, T.J. (1979) 'Corals and coral communities of Lord Howe Island'. Aust.J.Mar.Freshwater.Res. 30,203-236.

Whitley, G.P. (1937). 'The Middleton and Elizabeth Reefs. South Pacific Ocean.'. Aust.Zool. 8,212-214.

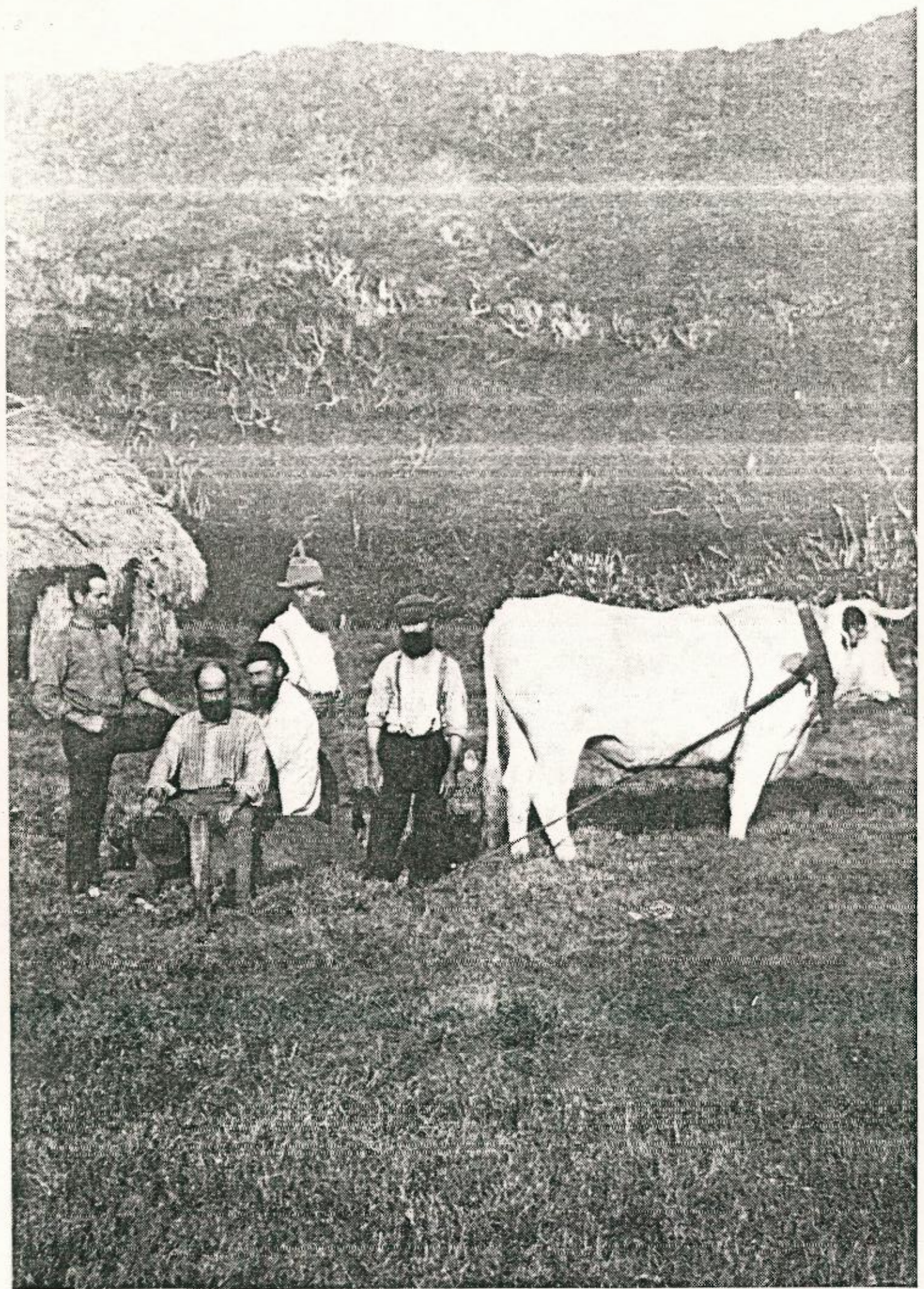
Williamson, W.H. (1957). Water resources of Lord Howe Island.

(f) Climate

Russell, H.C. (1895). 'The climate of Lord Howe Island'. J. & Proc. Roy.Soc.N.S.W. 29,512.

Victoria. Bureau of Meteorology. (1956). Climate averages, Australia. Melbourne.

Victoria. Bureau of Meteorology. (1969). Climatic averages, Australia. Temperature, relative humidity and rainfall. Melbourne.



2. HISTORY and HERITAGE

Note historical documents dealing primarily with the natural history of the Island are entered under the appropriate sub-sections in Part 1 of this bibliography.

Anon. (1789). The voyage of Governor Phillip to Botany Bay, with an account of the establishment of the colonies of Port Jackson and Norfolk Island, compiled from authentic papers which have been obtained from the several departments. To which have been added the journals of Lieut. Shortland, Watts, Ball and Capt. Marshall. John Stockdale, London.

Anon. (1853). Correspondence relating to the proposed penal settlement on Lord Howe Island. N.S.W. Parliamentary Papers 2, 715-735.

Australian Museum, Australian Natural History, Vol. 18, No. 2, June, 1984.

Birmingham, J. (1984). Lord Howe Island Heritage Study, September.

Blackburn, D. (1788). Mss. letters in Mitchell Library, Sydney. See J. & Proc. R. Aust. Hist. Soc. 1934, 10, 327-328.

Bowes, A. (1787-8). A journal of the voyage from Portsmouth to New South Wales and China in the 'Lady Penrhyn'. Ms. in the Mitchell Library, Sydney.

Chichester, F. (1933). Alone over the Tasman Sea. George Allen and Unwin Ltd., London.

Clark, H.L. (1935). 'The paradise of the Tasman'. National Geographic Magazine.

- Coffee, F. (date unknown). Forty years on the Pacific: the lure of the great ocean. Oceanic Publishing Co., Sydney.
- Corrie, A.T. (1878). 'Visit to Lord Howe Island'. Proc.R.Geog.Soc. 22,136-143.
- Denham, H.M. (1853). 'Remarks upon Lord Howe Island'. N.S.W. Parliamentary Papers, 2,726-727.
- Gilbert, T. (1789). Voyage from N.S.W. to Canton in the year 1788. London. pp.8-12.
- Howard Tanner & Associates. (1985). Lord Howe Island Heritage Study, March.
- Kelly, M. (1984). History Lord Howe Island Heritage Study, September.
- Nicholls, M. (1938). A history of Lord Howe Island 1788-1938. George M. Dash, Sydney.
- Nicholls, M. (1951). A history of Lord Howe Island. Mercury Press, Hobart.
- Nicholls, M. (1975). A history of Lord Howe Island. Mercury-Walch, Hobart. 146 pp.
- Rabone, H.R. (1940). 'Lord Howe Island. Its story from its discovery to the year 1888'. J. & Proc.R.Aust.Hist.Soc. 26(2),113-164.
- Rabone, H.R. (1940). Lord Howe Island. Its discovery and early associations 1788-1888. Australis Publication, Sydney.

Stock, R. (1916). The chequered cruise. Dodd, Mead and Co., New York.

Tanner, H. (1984). Lord Howe Island Group Regional Environmental Study. Heritage Study. Prepared for the Lord Howe Island Board.

Sections include:

- . Birmingham, J. Archaeological report.
- . Inventory and plan of heritage items.
- . Kelly, M. History of the Island.
- . Tanner, H. Architectural appreciation.

Whitley, G.P. (1974). "From First Fleet to El Torito".
Aust.Nat.Hist. 18(2),38-43.



3. SOCIAL and ECONOMIC ISSUES;

Anon. (1974). Crisis on Island - Lord Howe "ruined" without air link. The Australian 16th January, 1974.

Anon. (1984b). Sewerage treatment & disposal on Lord Howe Island. Department of Public Works, Sydney, 4pp.

Anon. (n.d.) Lord Howe Island information booklet. Tourist promotion committee of Lord Howe Island.

Anon. (n.d.) Tourist guide to Lord Howe Island. Thompson's General Store, Lord Howe Island.

Ballantyne, J.A. (1952). Report on fruitgrowing. N.S.W. Department of Agriculture, Sydney.

Best, H.E. (1955). Report on guest houses. Department of Tourist Activities and Immigration.

Bevan, W. (1912). Report of the Royal Commission of Inquiry into the condition and welfare of the residents of Lord Howe Island, and the control of the Kentia palm seed trade. Votes and Proceedings of the Legislative Assembly of New South Wales, 1912.

Blumar, O.C. (1956). Report on the treatment of stock. Department of Agriculture. Sydney.

Boughton, C.R. (1980). Public health problems - Norfolk Island. Health Commission of N.S.W., Sydney.

Bowden, G.T. and Henry, B.I. (1981). Energy survey and wind energy proposal. Energy Authority of N.S.W., Sydney.

Burmester, H. (1983). 'Outposts of Australia in the Pacific Ocean'. Aust. Journal of Politics and History 29(1),14-25.

Buttsworth, C.J. (1947). Report on visit to the Island by the chairman of the Lord Howe Island Board, Lord Howe Island Board of Control, Department of Lands, Sydney.

De Marco, C. (1984). Department of Environment and Planning. Lord Howe Island Group Regional Environmental Study. Social and Economic Study for Lord Howe Island.

Deboer, B. (1980). Environmental health survey. Health Commission of N.S.W., Sydney.

Department of Aviation, Notice of Intention Satellite Ground Station Lord Howe Island, 1984. Department of Environment and Planning for the Lord Howe Island Board.

Douglass, J. (1956). Agricultural reports. Department of Agriculture, Sydney.

Duncan, R. (1955). Inspection by accountant. Chief Secretary's Department, Sydney.

Earl. (1958). Report on Marine Typhus Fever. Health Commission of N.S.W., Sydney.

Ferrier, L.S. (1923). Survey of Lord Howe Island. Department of Lands, Sydney.

Glascott, J. (1977). 'Trouble at Lord Howe. Even in paradise the have-nots are unhappy.' Sydney Morning Herald, 16th March.

Glascott, J. (1978). 'Move to limit Lord Howe tourism - national park decision sought.' Sydney Morning Herald, 22nd July.

Glascott, J. (1979). 'The tourist threat to our Eden'. Sydney Morning Herald 14th April, p.13.

Glascott, J. (1983). 'Lord Howe Island annoyed by visiting yachts.' Sydney Morning Herald, 5th February.

Goodwin, G.C. (1975). Environmental health survey. Health Commission of N.S.W., Sydney.

Goodwin, G.C. (1977). Environmental health survey. Health Commission of N.S.W., Sydney.

Harkness. (1923). History of land tenure. Chief Secretary's Department, Sydney.

Hassall and Associates, Lord Howe Island Board Kentia Palm's Industry Review, undated.

Hoddinett, R.H. (1976). Electrical supply. Public Works Department, Sydney.

Jones, A.R. (1948). Report on land tenure. Lord Howe Island Board of Control, Department of Lands, Sydney.

Jones, A.R. (1959). Report on land transfers. Lord Howe Island Board of Control, Department of Lands, Sydney.

Lord Howe Island Board. (1977). Report on proposed bus service for the Island. Lord Howe Island Board, Department of Lands, Sydney.

Lord Howe Island Board. (1977). Lord Howe Island Building Code, L.H.I. Board, Department of Lands, Sydney.

McDermott, E. (1960). Inspection of plant items. Public Works Department, Sydney.

Muir, T. (1923). History of land tenure. Chief Secretary's Department, Sydney.

Murphy, W.J.B. (1948). Meat supplies. Department of Agriculture, Sydney.

N.P.W.S. (N.S.W.). An Account of the Feral Cats (Felis Catus) Problem on Lord Howe Island. Position Paper, January, 1982.

N.P.W.S. (N.S.W.). Domestic Cats on Lord Howe Island, 15 July, 1982.

New South Wales. Public Works Department (1971). Lord Howe Island electricity supply. Public Works Department, Sydney.

New South Wales. Public Works Department (1975). Feasibility study of services. Public Works Department, Sydney.

New South Wales. Public Works Department (1977). Lord Howe Island Building Code. Government Printer, Sydney.

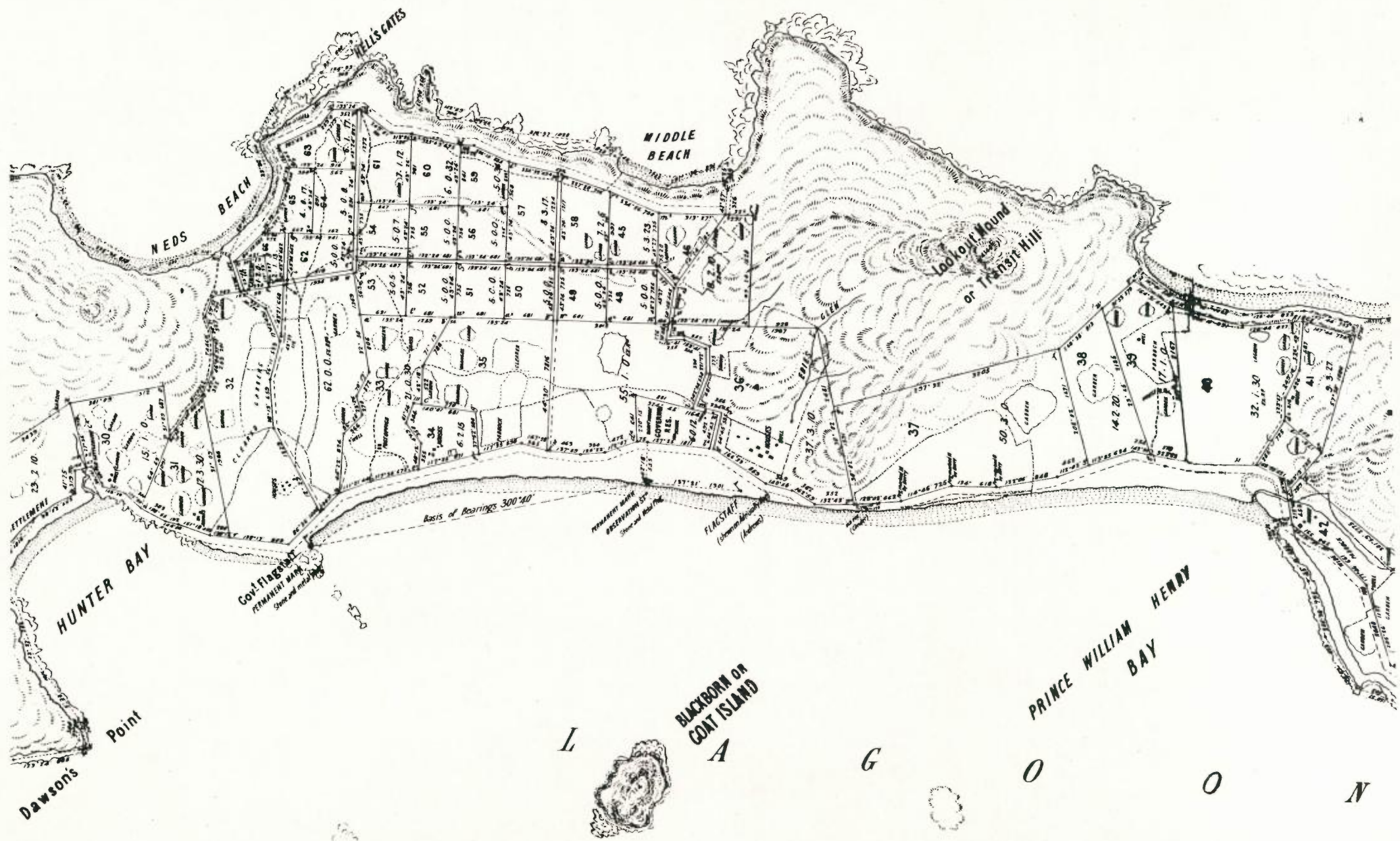
- Noble, R.J. (1957). Perishable commodities. Department of Agriculture, Sydney.
- Pannell, Kerr, Foster, Lord Howe Island Tourism Study, November, 1984.
- Royal Botanic Gardens, Sydney, Environmental Impact Study Howea Palms : Lord Howe Island, July 1984, Marilyn Fox, Jeff Thomas.
- Schultz, J. (1981). 'When father in law wants the phone. Telephone exchange for Lord Howe Island'. National Times 8th November, p.8.
- Schultz, J. (1981). 'Sinclair helped Lord Howe jump the queue'. National Times 15th November, p.4.
- Sheahan, W.F. (1960). Health matters. Health Commission of N.S.W., Sydney.
- Shirlow, N.S. (1954). Vegetable production. Department of Agriculture, Sydney.
- State Pollution Control Commission, Sewage Treatment and Disposal on Lord Howe Island, October, 1984 Report.
- Toon, J. (1980). Town planning report. University of Sydney.
- Toon, J. (1982). Town planning - supplementary report. University of Sydney.

Vickery, J.R. (1957). Perishable commodities. C.S.I.R.O.

Way, D.H. (1955). Sanitary survey. Health Commission of N.S.W.,
Sydney.

Way, D.H. (1956). Sanitary survey - supplementary report. Health
Commission of N.S.W., Sydney.

Wilson, J.B., Wilkinson, H. and Duff. J. (1882). Lord Howe Island.
(Report on present state and future prospects). Votes
and Proceedings of the Legislative Assembly of New South
Wales, 1882, 4,1463



4. LAND USE AND LAND MANAGEMENT

Anon. (1974). 'Crisis on Island - Lord Howe 'ruined' without air link'. The Australian, 16th January.

Anon. (1974). Lord Howe Island - Environment in the balance. A sequel and the case for a National Park Administration under a trust. National Parks Journal, October/November pp?

Anon. (1975). Future land use and land management of Lord Howe Island. Report to the Lord Howe Island Board. Government Printer, Sydney.

Anon. (1975). N.P.A. submission hastens Lord Howe National Park. National Parks Journal, March/April. 10pp.

Ashton, N. (1974). Lord Howe Island. Report to the Lord Howe Island Board on the future land use and land management of Lord Howe Island. (Unpublished). State Planning Authority of New South Wales, Sydney.

Ashton, N. (1976). Lord Howe Island. Supplementary report on the future land use and management of Lord Howe Island. State Planning Authority of N.S.W., Sydney.

Atkinson, G. (1983). Soil Conservation Service of N.S.W., Land Resources Study Lord Howe Island, April.

Atkinson, G. (1984). Soils and land planning on Lord Howe Island. A.S.S.S.I. National Soils Conference. 13th-18th May, 1984.

Australia. Australian Heritage Commission. (1981). Nomination of the Lord Howe Island Group by the Commonwealth of Australia for inclusion in the World Heritage List. Government Printer, Canberra. 26pp.

- Australia. Department of Transport (1974). Environmental assessment - proposed aerodrome. Air Transport Group, Department of Transport.
- Bartlett, R. (1984). Department of Environment and Planning. Lord Howe Island Group Regional Environmental Study. Visual Assessment Working Paper. For the Lord Howe Island Board.
- Britton, G. (1979). Investigation and aspects of the design for new marine facilities on Lord Howe Island. Public Works Department, Sydney.
- Burden, E. (1982). 'Lord Howe Island'. Travelweek 25th January-7th February, p.24.
- Butters, J. (1979). 'Lord Howe Island'. Signpost 1(4),86-95.
- Cohen, B. (1983). 'Protecting Australia's heritage'. Edited text of speech by the Minister for Home Affairs and the Environment. Aust.Foreign Affairs Record 54(10),664-666.
- Edgecombe, J. (1977). 'Saving Lord Howe Island'. Habitat Australia 5(4),10-19.
- Elenius, E. (1979). 'Lord Howe Island-world heritage threatened'. National Parks Journal September/October 13,13-14.
- Ferrier, I. (1978). Report on Lord Howe Island tourist information centre museum. Public Works Department, Sydney.

Ford, A.R. (1955). Report on Lord Howe Island jetty. Public Works Department, Sydney

Lands Department. (1948). Report by Mr. Jones (Under Secretary for Lands and Member of Lord Howe Island Board of Control) to Hon. W. Sheahan, Minister for Lands, 8th December.

Lord Howe Island Board (1976). Land management scheme. Lord Howe Island Board, Department of Lands, Sydney.

Lord Howe Island Board (1977). Corporate plan. Lord Howe Island Board, Department of Lands, Sydney.

Mosley, G. (1983). 'Australia's world heritage areas'. Habitat Australia February, 1983, 11,16-26.

National Parks Association. 1974. Proposal for a Lord Howe Island National Park.

National Parks and Wildlife Service (N.S.W.) Draft Management Plan for the Lord Howe Island Permanent Park Preserve. September, 1984.

National Parks and Wildlife Service (N.S.W.). Lord Howe Island Permanent Park Preserve. Discussion Paper on Bases for Management, 1984.

New South Wales. Crown Lands Office. (1984), Report, Analysis of residential potential of vacant Crown land on Lord Howe Island.

New South Wales Government, Australian National Parks and Wildlife Service, Australian Heritage Commission. (1981). Nomination of the Lord Howe Island Group by the Commonwealth of Australia for inclusion in the World Heritage List, December.

- New South Wales. Soil Conservation Service. (1983). Land Resources Study of Lord Howe Island Settlement Area. Prepared for the Lord Howe Island Board, Government Printer, Sydney.
- Newman, J.C. (1978). Coastal dune protection-Lord Howe Island. 4th Australian Conference on Coastal and Ocean Engineering, Adelaide.
- Peach, B. (1981). 'Lord Howe Island:the hidden danger'. National Parks Journal December, 1980-January, 1981. 24,15-16.
- Pollard, D.A. (1977a). A proposed Lord Howe Island marine reserve: protecting the southern-most coral reef in the world. In Collected Abstracts and Papers of the International Conference on Marine Parks and Reserves, Tokyo, Japan, 12th-14th May, 1975. Bull.Mar.Park Res.Sta. (Japan), 1,71-79.
- Pollard, D.A. 1977c. Proposed environmental survey of Lord Howe Island. N.S.W. Fisheries Internal Report.
- Ponder, W.F. 1981. Marine Mollusca. In Lord Howe Island. A summary of current and projected scientific and environmental activities. Eds, H.F. Recher and W.F. Ponder. Australian Museum, Sydney. Abstract, p.10.
- Randall, J.E. (1975). Lord Howe Island. A land and sea preserve. Proceedings of the International Conference on Marine Parks and Reserves, Tokyo, Japan. 12-14th May, 1975.
- Ray, C.P. 1977b. A preliminary classification of coastal and marine environments. Collected Abstracts and Papers of the International Conference on Marine Parks and Reserves, Tokyo, Japan, 12th-14th May, 1975. Bull. Mar. Park Res. Stat. (Japan) 1, 123-137.
- Rea, F. (ed.)(1979). 'Lord Howe and Norfolk Islands'. Pacific Travel News August, 1979. pp.94-97.

Recher, H.F. and Clark, S.S. (1974). 'Exploitation vs. conservation'. Aust.Nat.Hist. 18(2), 74-97.

Ryan, T. (1983) Department of Lands. Land Use Policy Set, October.

Ryan, T.C. and Field, G.L. (1982). Department of Lands. Land assessment of Lord Howe Island. URPIS Conference, Sydney, 1982.

Ryan, T. & Hoppe, S. Department of Lands and Department of Environment and Planning. Planning Procedures for Lord Howe Island, August, 1984.

Starling, J.F. (1975). National Parks and Wildlife Service, Sydney. Proposed Lord Howe Island National Park.

Toon, J. (1980). Town planning report to the Lord Howe Island Board, February. University of Sydney.

Toon, J. (1982). Town planning - supplementary report. University of Sydney.

Urwin, N. (1984). Department of Environment and Planning. Lord Howe Island Group Regional Environmental Study. Bushfire Hazard. For the Lord Howe Island Board.

Williamson, W. H. (1957). Water Conservation and Irrigation Commission. Water Resources of Lord Howe Island.

